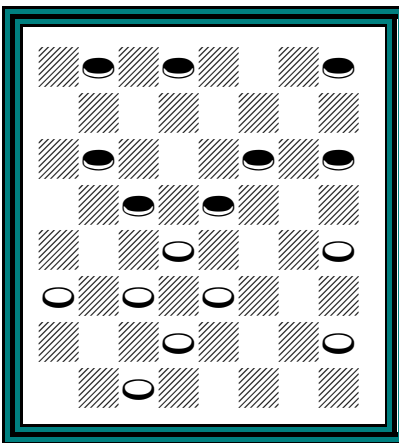


# Vegas 2007

the checker games of  
**U.S. National GAYP National Tournament**  
**“Arthur Niederhoffer” National Youth Tournament**  
**WCDF GAYP World Qualifying Tournament**  
**WCDF GAYP World Qualifying Tournament –Women**  
annotated by Jim Loy

+

**Dr. Richard Beckwith’s reminiscences of Vegas and all four tournaments**



**Red Draws**

J. Webster – R. Beckwith p.22

© 2008, Jim Loy



2007 Youth tournament featuring the Cardie clan (yellow lettered shirts), Solomon and Forest Reece (striped shirts), and, left-to-right, Ryan Pronk, Rich Beckwith, Marjorie & Gerry Lopez, Shane McCokser, Alan Millhone, Tim Laverty (in front of Alan), Paul Bryan, and Keith Weaver (front-right).



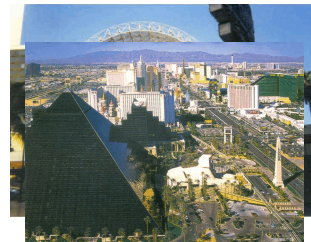
photo taken from nccheckers.org site



Rich Beckwith and Colton Cardie. Taken by John Cardie.



L-R 1) Nico Pradenas 2) Alex Weaver 3) Francesco La Rocca 4-back) Gene Lindsay 5) John Cardie (back white hat is Ron King) 6) Tim Laverty 7) Hollis McClard 8) Paul Bryan. Photo by Francesco La Rocca.



Las Vegas Blvd. (the Strip)



Front row, left-to-right: ?, Keith Weaver, John Webster, Tim Lavery, Wilma Wolverton, Paul Lyons, Francesco La Rocca, Alex Weaver, Gerry Lopez, 2<sup>nd</sup> row: Michael Holmes, Paul Stein, Jimmy O'Grady, Ron King (behind Wilma), Saul Fenster?, Bob Murr, 3<sup>rd</sup> & 4<sup>th</sup> rows, Paul Bryan, Wade Holder, Ray Shelly, Tommy Canning, Lubabalo Kondlo (behind Lavery), Rich Beckwith, Jim Morrison, Anthony Bishop (behind Jim's shoulder) back rows, left-to-right: ?, Eric Strange, ? (behind Eric), Kevin Burks, Shane McCosker (behind Lubabalo's right shoulder), Robert Ferguson, Billy Runge, Gene Lindsay, ?, Steve Blackshear (waving), Al Darrow.



Poodle Rock



*Rich Beckwith in Valley of Fire near Mouse's Tank*



Richard Beckwith: This article presents a day-by-day account of my impressions of the 2007 Las Vegas tournaments. Part 1 covers the youth tournament and US Nationals held in July. Part 2 reports on the World Qualifying Tournament in September. The third part gives my travel impressions of Las Vegas.

## **2007 ACF National “Derek Oldbury” GAYP Tournament and Arthur Niederhoffer Youth Tournament**

by Richard Beckwith

I arrived in Las Vegas on Friday Night, July 20 at the Las Vegas Plaza Hotel.

The “Arthur Niederhoffer” youth tournament kicked off Saturday morning. As I came from my 11th floor hotel room, I was pleasantly surprised to find Tommy Canning and Shawn McCosker in the elevator. I last saw this pair when I played Tommy in the final round of the Prague Qualifier in 2005. Shawn was here for the youth and National tournament. I asked him about his first impressions of Las Vegas, to which replied, “Very hot!”

There were four older youth (defined as 21 and under in ACF tournaments) vying for the \$3000 first prize, with an impressive list of players. Ryan Pronk was perhaps the most well known American, having finished 2nd in the big 2007 Tennessee State Tournament ahead of numerous masters. Shane McCosker of Northern Ireland is new to U.S. competition, but played solidly with a 7th place finish at last year’s adult World Qualifier in Stonehaven Scotland. Rounding out the field were Kevin Burks, a Virginia State champ, and Paul Bryan of Ohio, past winner of the Majors in the Southern. There was also a younger division featuring six boys. Three boys were grandchildren of John Cardie, and two were grandsons to Alan Millhone. The 6th participant was only four years old! (Not quite a record, as we had a three-year old at the 2007 PA tournament.)

Tim Laverty refereed the youth event, with Kim Willis, ACF secretary, assisting with event promotion. The older kids recorded their own games and played a double round-robin and a repair round to make 7 rounds. The younger kids played a round-robin with two additional repair rounds to make 7 rounds. Adults recorded the games for the younger kids.

The playing facility for the youth tournament and next week’s adult tournament was played in the Plaza Showroom attached to the back of the ground floor casino. In contrast, the 2005 8th International Match was played upstairs in a third floor conference room. This year’s playing room had a red-carpet amphitheater setting. There were several levels of booths and rectangular tables for the players. The room was spacious. The only downside with the room was the lighting, which was adequate, but minimal. Naturally, the lighting is geared to what would normally appear on stage rather than where the audience sits. We made several requests with the hotel staff to improve lighting. The best we got were a few spotlights that shined into the ceiling.

Joe Strazicich had an exposition of Gold Token freebies (drinking glasses, pens, highlighters, etc.) Gold Token is the ACF’s new checker gaming site. John Cardie had a new children’s checker book for sale. John’s book features many colored checker diagrams of beginner’s positions. Tommy Canning also had a sample book on display for his excellent upcoming compilation on the twelve new 3-move openings.

During Saturday’s play in the youth tournament, Shane McCosker won a game from Ryan Pronk (who unsuccessfully tried the Waterloo) to take the lead with 10 points. Kevin Burks was 2nd with 8, and Pronk and Bryan had 7 points. In the younger group, Colton Cardie (14 points) was first with Solomon Reece 2nd (12 points).

On Sunday, a group picture was taken of the youth players. The younger kids finished first, with Colton Cardie trailing Solomon Reece by 2 points heading into the final round after Colton had just lost to Solomon. John Cardie gave a pep talk to Colton that he later relayed to a Colorado newspaper:

*King Solomon, Cardie calls him, the boy's name being Solomon. He's from Ohio and is known to move quickly and without mercy. Colton lost both games in 20 minutes. "Solomon kicked his butt," Cardie says. Cardie set off to console his grandson, whom he found in an empty hallway, stunned at the speed with which his defeat was delivered. Still, this loss did not budge Colton from the title round. He would have to battle Solomon one last time. "To win wouldn't be easy," Cardie says. But grandpa had a plan. "You've got him right where you want him, right?" "I do?" Colton asks. "Now he thinks you're a pushover. He thinks he's the bowling ball and you're the pins. This is what you need to do, Cardie told his grandson. You have five minutes to make a move. Take those five."*

I personally recorded the final two games. The pace of play was rather quick (and certainly not the full five-minutes-a-move), and it was a challenge to keep up with recording the moves. After winning the first game, Colton and Solomon were now tied on points going into the final game. After a safely played opening part of the game on Single Corner opening, Colton gained a dominant center in the midgame and forced Solomon into a two-for-one shot to win the youth title. While this dropped Solomon into third place, he had an excellent tournament, even with having to play Colton three times.

Shane McCosker went on to win the older youth group (21 and under). Kim Willis presented trophies, certificates, and prize money to each youth.

#### **Older Youth Final Results**

| Pos. | Name           | Pts. | HP |
|------|----------------|------|----|
| 1    | Shane McCosker | 16   |    |
| 2    | Ryan Pronk     | 14   | 88 |
| 3    | Kevin Burks    | 14   | 84 |
| 4    | Paul Bryan     | 12   |    |

#### **Younger Youth Final Results**

| Pos. | Name             | Pts. |
|------|------------------|------|
| 1    | Colton Cardie    | 22   |
| 2    | Conrad Cardie    | 21   |
| 3    | Solomon Reece    | 20   |
| T4   | Calvin Cardie    | 7    |
| T4   | Forrest Reece    | 7    |
| 6    | Jonathan Sargis* | 4    |

\*Withdrew after 4 rounds

Monday was a rainy morning. By evening, there was lightning and a flash flood warning. Apparently this time of year is their "monsoon" season, although the annual rainfall in the desert is still only a few inches. Registration and a business meeting were conducted. Kim spoke about how great the youth performed. ACF Life Member Ray Shelly made a passionate speech about growing the game from a "garden club" to a National organization. Wade Holder asked about pairing rules, stating his dissatisfaction with being repaired with the same player more than twice in the same tournament (based on past experiences). Another rumor going around was that Ron King somehow missed his flight departing Barbados and would not arrive until after the start of the tournament.

There were two rounds on Monday. The one new change to this year's GAYP National was the switch to two-game rounds from four-game rounds, scoring by game. This also means everyone will have more opponents to cover 13 rounds. (Four-game rounds are still used at 3-move Nationals, where the Masters have the tough deck situation for games 3 and 4.)

Lubabalo Kondlo of South Africa and Jim Morrison opened the tournament with two draws against each other. John Webster took 3 and 4 points from Joe Schwartz and Alan Millhone, respectively. Paul Bryan (last in youth tournament) made a few waves, winning a game and 3 points off both Jack Francis and Gene Lindsay. Jack Francis is a Barbados player who finished 3<sup>rd</sup> at the 2005 GAYP National and also privately challenged Ron King for the world title later that year. Shane McCosker (the other youth contestant competing in the masters) started off with all draws against Hallett and Beckwith. Ryan Pronk did not play in the main tournament. The fourth youth participant, Kevin Burks, took the day 1 lead in the Majors with 7 points. Alex Weaver led the Minors with a perfect 8 points. The Masters leaderboard stood as follows:

|               |   |
|---------------|---|
| John Webster  | 7 |
| Paul Bryan    | 6 |
| Jim Morrison  | 5 |
| Rich Beckwith | 5 |

One of the week's big stories was the arrival of a player from South Africa. Alan Millhone went to much effort and red tape at working to bring Lubabalo Kondlo here. Victor Niederhoffer offered much assistance financially. I understand that Lubabalo's home community is extremely poor. People sleep like sardines in his crowded house, and share an outhouse with a neighboring house. Lubabalo eats a mush-like substance for sustenance and gets prime rib maybe once every two years, and ice cream maybe at Christmas. Lubabalo was blown away with the Las Vegas accommodations by having his own bed and having a buffet available anytime of the day!

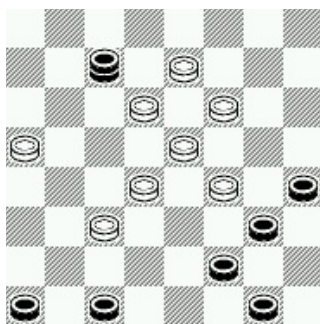
On Tuesday I received a shipment from Jim Loy of his brand new book entitled, "The Magical Play of Elbert Lowder." The book is very thick (447 pages), spiral bound, and contains annotated games and diagrams spanning Elbert's checker career. I sold several books during the tournament on Jim Loy's behalf at \$30 apiece.

Richard Hallett, one of the all-time greats (especially in 3-move play), lost two games to Jim Morrison. I have heard Hallett say on occasion, "I don't like GAYP." Ron King finally arrived in the afternoon and still thought he could make a comeback to contend in the tournament. He started the evening round with a bye worth 3 points.

At the end of Day 2 (5 rounds), John Webster continued to lead.

|                  |    |
|------------------|----|
| John Webster     | 15 |
| Shane McCosker   | 14 |
| Jim Morrison     | 13 |
| Lubabalo Kondlo  | 12 |
| Richard Beckwith | 11 |
| Joe Schwartz     | 11 |

On Wednesday Ron King worked his way up through the bottom half of the field, scoring 11 out of 12 possible points. The day concluded with a small prayer service by Wade Holder. There was not much change in the top of the leaderboard. With 8 of 13 rounds in the books, John Webster continued to lead. John played three drawn rounds with Kondlo, Lindsay, and Beckwith. John's game with Lubabalo ended in a pretty shot:



Black to move and draw

Black draws with 3-8, 14-5, 13-17, 22-13, 6-9, 13-6, 1-19, 23-16, 8-31!  
The standings were as follows:

|                  |    |
|------------------|----|
| John Webster     | 21 |
| Shane McCosker   | 20 |
| Jim Morrison     | 19 |
| Lubabalo Kondlo  | 19 |
| Richard Beckwith | 18 |

There was more movement in the lower divisions. Jimmy O'Grady opened up a three-point lead over Kevin Burks in the Majors. Eric Strange won all six games to take a Minors lead that he would never relinquish, although Gilberto Cisneros of Mexico made a fine run down the stretch.

Thursday was a very lively day in the Masters. Clayton Nash won a game off John Webster on a Wagram line to tighten things at the top. Meanwhile, it became apparent the Lubabalo Kondlo was the lucky man of

the tournament week. Paul Bryan had Kondlo in an apparent loss with 4 kings vs. 3 kings in the center of the board, but a bad slip allowed Mr. Kondlo to draw. The next round featured more of the same when Kondlo played myself. Just as in the Paul Bryan game, Kondlo was again down 3 kings to 4 kings. And in what has to be my worst lapses ever, I ended up giving Kondlo the game. What can I say.....my focus had gotten erratic to the point where I happened to “see” the board totally different than what the actual position was. In the second game, I was able to get the game back with a prepared pitch when Kondlo played a weak Glasgow line that was played by Jack Francis and Carl Reno in 2005.

Gerry Lopez talked to local TV news reporter in the playing room. The news piece was shown on local TV in the late afternoon. The clip featured Gerry’s interview and a few shots of some of the players. The day ended with a four-way tie at the top.

|                  |    |
|------------------|----|
| John Webster     | 26 |
| Shane McCosker   | 26 |
| Lubabalo Kondlo  | 26 |
| Richard Beckwith | 26 |
| Jim Morrison     | 25 |
| Joe Schwartz     | 25 |
| Gene Lindsay     | 25 |
| Clayton Nash     | 24 |

Ron King’s winning pace turned into a draw streak when he was paired with Jim Morrison and Lubabalo Kondlo to finish the day with 22 points – too far back to contend with two rounds remaining. King and Kondlo played two "quiet" draws head-to-head (Old 14th).

Repairing was initiated in the final two rounds on Friday. Gene Lindsay won a game off Joe Schwartz to make it a 5-way tie (!) heading into the afternoon’s final round. John Webster struck first winning a game off Jim Morrison when Jim played a weak Pioneer line with red. Shane McCosker and Gene Lindsay played two draws. That left the rematch of Lubabalo Kondlo and Richard Beckwith as the last match of the tournament (among the contenders) still in progress. After a drawn first game, Lubabalo selected the tricky 5-9 man-down line of the Old Fourteenth. Actually I welcomed him trying it, as I thought I knew it pretty well, and I even featured the line in my 2006 Ohioan book. However, I went on to misplay the ending when it came to a race of “going in for kings” and Lubabalo won on a long ending. After an honor point calculation it was determined that Lubabalo had two more honor points than John Webster and was crowned the tournament winner. Kevin Burks came from behind to edge out Jimmy O’Grady to win the Majors. Eric Strange won the minors, and Wilma Wolverton was crowned U.S. ladies champion.

John Webster had an outstanding tournament. Gene Lindsay told me that he set John up with a checker program, which seems to have rejuvenated his play. This tournament was also a fine one for Gene Lindsay. These close friends held the top two American spots. (We’ll really miss you Gene!)

Paul Bryan (last in youth tournament) won rounds from Francis and Lindsay on Day 1, and also won games from Hallett and Holmes (and had Kondlo in an ending loss, but drew). Shane McCosker hovered around 2nd place through much of the tournament (and must now be the year’s leading money winner through July 2007!). This shows how good the youth tournament was this year.

Prize fund was \$11,545. Here are point totals.

**Masters**

| Pos. | Name                      | Points | Honor Points | Prize     |
|------|---------------------------|--------|--------------|-----------|
| 1    | Lubabalo Kondlo (S. Afr.) | 31     | 346          | \$2115    |
| 2    | John Webster (NC)         | 31     | 344          | \$2115    |
| 3    | Shane McCosker (N. Ire.)  | 30     | 347          | \$1132.50 |
| 4    | Gene Lindsay (TN)         | 30     | 330          | \$1132.50 |
| 5    | Richard Beckwith (OH)     | 29     |              | \$ 545    |
| 6    | Jim Morrison (KY)         | 28     | 349          | \$ 100    |
| 7    | Clayton Nash (MS)         | 28     | 330          | \$ 100    |
| 8    | Joe Schwartz (FL)         | 28     | 323          | \$ 100    |
| 9    | Richard Hallett (FL)      | 28     | 319          | \$ 100    |
| 10   | Jack Francis (Barb.)      | 28     | 315          | \$ 100    |
| 11   | Ron King (Barb.)          | 28     | 190          | \$ 100    |
| 12   | Paul Bryan (OH)           | 27     |              |           |
| 13   | Michael Holmes (KY)       | 26     |              |           |
| 14   | Anthony Bishop (TN)       | 25     |              |           |
| 15   | Alan Millhone (OH)        | 20     |              |           |
| 16   | Keith Weaver (ID)         | 15     |              |           |
| 17   | Anatoly Rayevsky (NC)     | 9      |              |           |

**Majors**

| Pos. | Name                 | Points | Honor Pts | Prize    |
|------|----------------------|--------|-----------|----------|
| 1    | Kevin Burks (VA)     | 39     |           | \$645    |
| 2    | Jimmy O'Grady (NY)   | 36     |           | \$460    |
| 3    | Bob Murr (CO)        | 31     |           | \$325    |
| T4   | Paul Lyons (CA)      | 27     | 324       | \$207.50 |
| T4   | Ken Schultz (TN)     | 27     | 324       | \$207.50 |
| T6   | Tommy Canning (Ire.) | 26     | 325       | \$127.50 |
| T6   | Al Darrow (CT)       | 26     | 325       | \$127.50 |
| T8   | Wade Holder (NC)     | 25     | 326       | \$ 80    |
| T8   | Warren Meacham (CA)  | 25     | 326       | \$ 80    |
| 10   | Billy Runge (PA)     | 24     |           | \$ 45    |
| T11  | Robert Ferguson (UT) | 22     | 329       |          |
| T11  | John Gibson (CA)     | 22     | 329       |          |
| 13   | Hollis McClard (TN)  | 21     |           |          |

**Minors**

| Pos. | Name                       | Points | Honor Pts                                  | Prize   |
|------|----------------------------|--------|--|---------|
| 1    | Eric Strange (CA)*         | 44     |  | \$450   |
| 2    | Gilberto Cisneros (Mexico) | 41     |  | \$320   |
| 3    | Francesco La Rocca (NY)    | 38     |  | \$225   |
| 4    | Nico Pradenas (CA)         | 34     |  | \$160   |
| 5    | Wilma Wolverton (MO)       | 30     |  | \$125   |
| 6    | Alexander Weaver (NJ)      | 29     |  | \$95    |
| 7    | Steve Blackshear (CA)      | 28     |  | \$80    |
| 8    | Paul Stein (CA)            | 21     | 324  | \$57.50 |
| 9    | Saul Fenster (CO)          | 21     | 324  | \$57.50 |
| 10   | Kim Willis (MO)            | 20     |  | \$30    |
| 11   | Raymond Shelly (MD)        | 17     |  |         |
| 12   | Sol Kaplan (NV)            | 13     |  |         |
| 13   | John Cardie (CO)           | 2      | <i>Withdrew after 3<sup>rd</sup> round</i> |         |

\*US army stationed in Texas



## World Qualifier Tournament

The WCDF Qualifying Tournament was held in Las Vegas two months after the US National GAYP Tournament, won by Lubabalo Kondlo of South Africa, who squeaked by with first place on honor points over John Webster. On the weekend before the start of the tournament, Jim Morrison saw Lubabalo Kondlo seated beside the Plaza Hotel's circular driveway and asked Lubabalo if he brought his rabbit's foot again.

The US selections, made early in the year prior to the National, included defending GAYP WQT champ Jim Morrison (automatically entered by WCDF rules), Clayton Nash, Ed Bruch (now in his nineties!), Michael Holmes, Joe Schwartz (the hero of the 2005 Las Vegas 8th International Match), and Richard Beckwith, the latter two being ICHF nominations. The other two international entries besides Mr. Kondlo included WCDF Grandmaster Jack Francis of Barbados and Sune Thrane of Denmark, who played in Prague in 2005. The women's tournament featured Jan Mortimer of New Zealand and two distinguished Missouri ladies, Kim Willis (ACF Secretary and WQT organizer), and Wilma Wolverton, editor of *Missouri Checker Association Newsletter*.

The July National Tournament was held in a large, expensive showroom. But given the reduced number of competitors for this invitational, it was decided to hold the event in a 24<sup>th</sup> floor suite used by Alan Millhone. The suite featured adjoining rooms and our own bathroom. The accommodations were a little tight, but adequate (plus we had a nice view.) Long tables and chairs were rented to accommodate the players. I opened with a few remarks about the tournament proceedings. Alan left his laptop open on the counter to make frequent updates on the ACF forum so that the checker fraternity was informed of the progress of the event.

Tim Lavery, a fan of Las Vegas, agreed to referee this event and was added to the men's competition to produce an even number of players, as permitted in WCDF by-laws. This produced a field of 10 men and 3 women. The men were scheduled to play by Swiss pairings for 8 rounds, two rounds a day, with no repairing. The women played a double round-robin.

Colton Cardie, winner of the July younger youth division and grandson of John Cardie, was back. Because he was the only youth entry, Colton won the WCDF World Youth title by default. Colton is home-schooled and was able to attend. However, the decision to have the youth event in September during the school year appeared to hurt the youth attendance. At the July ACF National, we had six younger youth and 4 older youth (age 21 and under), whereas WCDF requires youth be under 18 or they are no longer considered youth, but young men. I note that the 2005 Prague GAYP Qualifier was also held in the fall, but still yielded 6 youth.

In Round 1 of the tournament, Tim Lavery began this GAYP event in typical Lavery fashion by opening with the supposedly weak opening 12-16 24-20 11-15 vs. Michael Holmes. Nevertheless, Tim's "mix-it-up" style worked on this particular occasion and enabled him to score 4 points to become one of the early front-runners. Jack Francis also picked up an early 4 points. In the second round, Lubabalo Kondlo won an Alma game from Ed Bruch (who doesn't lose too many games) after Ed lost in an ending. Jan Mortimer gained an early lead for the ladies division winning one game from Kim Willis. At the end of Day 1, the men's leaderboard had a two-way tie at the top:

|                 |   |
|-----------------|---|
| Jack Francis    | 6 |
| Tim Lavery      | 6 |
| Lubabalo Kondlo | 5 |
| Rich Beckwith   | 4 |
| Jim Morrison    | 4 |
| Clayton Nash    | 4 |
| Joe Schwartz    | 4 |

Tuesday's opening round was uneventful for the men in terms of placements (many drawn matches). The women arrived at the halfway point, where all three ladies had played each other once. Jan held a slender lead over the Missouri ladies.

|                 |   |
|-----------------|---|
| Jan Mortimer    | 9 |
| Kim Willis      | 8 |
| Wilma Wolverton | 7 |

Things livened up a bit for the men in the afternoon session (Round 4). Michael Holmes, who opened the tournament with a goose egg, scored a fine 4 points off Joe Schwartz.

I also picked up 4 points, but had yet to play many of the other top contenders. At the halfway point, we had a three-way tie for the lead.

|                 |    |
|-----------------|----|
| Rich Beckwith   | 10 |
| Jack Francis    | 10 |
| Tim Lavery      | 10 |
| Michael Holmes  | 9  |
| Lubabalo Kondlo | 9  |
| Ed Bruch        | 8  |
| Jim Morrison    | 8  |
| Clayton Nash    | 8  |

The ladies concluded on Wednesday, with Jan winning both her rounds against the Missouri ladies. Jan commented after the tournament how tough her games were with Kim and Wilma, who both tied for 2<sup>nd</sup>. Jan now wins the right to challenge Amangul Durdyeva for the ladies GAYP title.

|                 |    |
|-----------------|----|
| Jan Mortimer    | 20 |
| Kim Willis      | 14 |
| Wilma Wolverton | 14 |

There was much activity on the men's side as well. I played a secondary Souter line on Tim Lavery, who responded with a man-down variation. However, Tim made a late mid-game blunder, which prevented him from ever getting the piece back. Meanwhile, Jack Francis won a game from Michael Holmes, and Lubabalo won a key game from Clayton Nash on an Excalibur line ending. However, the joint lead of Francis and Beckwith didn't last long, as Lubabalo took two games from Joe Schwartz in the afternoon to take the lead. One of these key wins for Lubabalo was a repeated White Dyke mid-game position where I had previously missed a win versus Joe in Round 1. With one day and two rounds to go, one point separated the top three players.

|                 |    |
|-----------------|----|
| Lubabalo Kondlo | 16 |
| Rich Beckwith   | 15 |
| Jack Francis    | 15 |
| Tim Lavery      | 13 |

On Thursday, the tournament quickly became a two-man race with Clayton Nash taking a game from Jack Francis. Clayton went to school on a missed attack in the Round 5 Francis-Holmes Single Corner game and scored a fine win. Meanwhile, Lubabalo showed signs of playing defensively to maintain his lead. After Lubabalo played an extremely safe Old 14<sup>th</sup> line with white in Game 1, I varied with Cross with white in the second game. At the July Nationals, Kondlo played the tricky Montrose Cross (11-15 23-18 15-19), but in this Qualifier, he switched to 11-15 23-18 8-11 27-23 10-14. Lubabalo went off-book in the late mid-game, but the game initially appeared to be a solid draw to both of us. With one round remaining, Kondlo maintained his one-point lead.

|                 |    |
|-----------------|----|
| Lubabalo Kondlo | 18 |
| Rich Beckwith   | 17 |
| Jack Francis    | 16 |
| Jim Morrison    | 16 |

Immediately after the 7<sup>th</sup> round, Tim Lavery scouted out the final round pairings and informed me there was no way to make a fresh pair for everyone in the final round. The WCDF rules do not repair the last round (even though this practice is common in US tournaments). With only 10 players in the field, it is not surprising this situation arose. Alan Millhone suggested pairing from top to bottom to let the leaders play it off. I also considered the scenario of only repairing the bottom two. However, the consensus ruling was to repair from top to bottom for the final round. (I later discussed this with WCDF secretary John Reade after the tournament, and he found the solution reasonable.) This meant I would have to play Kondlo again in the final round.

Since I did not anticipate repairing, I spent the next two hours in my hotel room with Michael Holmes' laptop trying to come up with a second set of lines to play on Lubabalo. Given that this event is essentially "winner take all," I knew two quiet draws would not suffice for me. I looked at some really "off-the wall" Glasgow lines with the program, but didn't feel good about the winning chances of such material. Lastly, I quickly ran up the Cross game we had just played, and -- lo and behold -- realized I missed a win against Lubabalo in that late mid-game. I suspected he was unaware of it too, as he never mentioned any missed attacks to me after our game. So, I realized I missed one golden opportunity, but now I had something to try for in the event he plays for defensive repeat draw.

In our first game of Round 8, I had red and played a tricky Glasgow line (according to *Basic Checkers*, Var.K). Lubabalo said after the game that he had not seen that line in ages, but he picked out the correct draw moves. So, now it's the last game and I have white. I repeated the same Cross line as in the morning round. We were within a couple moves of the point where he made the losing move this morning. But after much eager anticipation on my part, he played an alternate draw line right before my trap, and my winning chances were quickly gone. After a few more moves of not finding anything to work with in the position, I offered him my congratulations for the drawn game and the tournament victory. I asked about our morning game, and he said he had no idea he was in a loss, but perhaps varied just to avoid potential complications. The final score was as follows:

| <b>Name</b>        | <b>Fed.</b> | <b>Points</b> | <b>Son. Ber.</b> |
|--------------------|-------------|---------------|------------------|
| 1. Lubabalo Kondlo | WCDF        | 20            |                  |
| 2. Rich Beckwith   | ICHF        | 19            |                  |
| 3. Jack Francis    | Barb.       | 18            | 257              |
| 4. Jim Morrison    | WCDF        | 18            | 252              |
| 5. Tim Lavery      | extra       | 17            | 293              |
| 6. Clayton Nash    | ACF         | 17            | 255              |
| 7. Ed Bruch        | ACF         | 16            | 233              |
| 8. Michael Holmes  | ACF         | 16            | 229              |
| 9. Joe Schwartz    | ICHF        | 16            |                  |
| 10. Sune Thrane    | Den.        | 3             |                  |

Tim Lavery told me after the tournament how he thought I should have gone all out against Kondlo to get him off book. While this is more Tim's style than it is my strength, he may have a good point. My choice of more "conservative" winning chances didn't pan out this time.

While I was pretty engrossed in my last four games, I don't recall much fanfare at the close of the tournament in terms of a ceremony, trophy presentation, or group picture (as was done in Prague in 2005). I only recall each player received a certificate and an envelope of money from Kim Willis as a financial kickback to assist with player expenses.

I was encouraged about the development of Checkers in South Africa. Alan Millhone provided Lubabalo with several checker sets to take home. Lubabalo was also expecting an entourage of fans at the Johannesburg airport awaiting his arrival (if only we had such reactions for our American players!). I also heard talk of possible Sponsorship from Coca Cola within South Africa after seeing Lubabalo's success. Lubabalo also spoke of promoting his own draughts association within South Africa, although I suspect their governmental rules will not permit recognition of a second entity. Alan Millhone also passed on his thoughts for Lubabalo's future match with Ron King:

*Lubabalo getting to play in this match and getting the match publicized in SA will go a long ways in what Lubabalo wants to encourage youth to take up the game and get the game into the schools as a viable after hours program to help keep the youth out of trouble. That at least is what Lubabalo's dream is.*

I also thank Kim Willis, Gerry Lopez, and Alan Millhone for all their work at putting this event together. I believe this was the only Qualifier bid received this year. There were many behind-the-scenes headaches they had to deal with, such as the Plaza Hotel gouging us on table rentals. I also understand Alan incurred significant personal expense at providing Lubabalo's hotel accommodations, as well as other details. So, my thanks go to the crew for making this event possible. I now await a new world title match between Lubabalo Kondlo and Ron King in September 2008.

## **Las Vegas**

One of my favorite recent checker destinations is Las Vegas, Nevada. I have attended Las Vegas five times for the 2002 National, 2004 National, 2005 8<sup>th</sup> International Match against Great Britain-Ireland, and the 2007 National and Qualifying Tournaments. Here I will present my impressions of the Las Vegas area, followed by some new personal memories from 2007.

There are two famous strip areas in Las Vegas. The old downtown strip (Fremont Street) features many of the older hotels, such as Binion's Horseshoe (commonly used for TV poker events), Golden Nugget, Fremont, Four Queens, and several others. The Golden Gate hotel is the oldest hotel & casino in Las Vegas and opened in 1905. In the 1990s, Fremont Street was covered with a four-block long canopy and was closed to traffic. The outside of the hotels is covered with thousands of moving lights at night. One great feature about the Fremont Street Experience is the hourly light shows in the evening. The outdoor hotel lights are turned off, and an animated light show set to music is run across the underside of the entire canopy. A different show runs periodically throughout the evening. When the show is complete, the casino lights come back on, and people begin to move about their normal business again.

The Fremont Street hotels tend to offer few ticketed shows compared to the new strip. However, the hotels are very close together, making it easy to get around by foot. Also, Fremont Street is climate controlled underneath the canopy, which is very helpful against the summer heat. On Friday and Saturday nights, live music can be found. There are many street vendors, souvenir shops (and Vegas showgirls) as you walk down Fremont. In my 2007 visits, there were increased street attractions including more musicians (such as a grand piano player), bands, and motorcyclists riding inside a spherical cage.

The other major strip on Las Vegas Boulevard is also a marvel to observe. These strip hotels tend to be newer and bigger with much landscaping, waterfalls, etc. (There also seem to be more people cluttering the sidewalks handing out advertisement cards to live girl shows too.) The newer strip extends three miles across Las Vegas Boulevard and contains many of the newer hotels, such as the Stratosphere, Sahara, Circus Circus, Mirage, Caesar's Palace, Bellagio, Aladdin, New York New York, and MGM Grand. Many of the hotels have distinctive outdoor architecture or other attractions. The Stratosphere features the tallest tower in the West. A makeshift volcano erupts every 15 minutes at the Mirage. Art lovers can visit the Bellagio's gallery or the painted ceilings within the Venetian. Roller coaster fans can take a ride at the Sahara, New York New York, Circus Circus, or even atop the Stratosphere tower. The Paris hotel has a model Eiffel Tower, while New York New York features a skyline of the Big Apple. The Sphinx and great pyramid are hard to miss at the Luxor.

Visiting all the hotels on foot is difficult given the greater spacing between hotels. The hotels are enormous, so they look closer together than they really are. I tended to visit a small cluster of hotels at a time, and other hotels can be reached by bus or by a free shuttle. There are a few free trams that connect some of the lower strip hotels, such as the connection between Bellagio and Monte Carlo, and another between Excalibur and Mandalay Bay. These are useful to save on walking. Recently, a monorail was added connecting MGM Grand and the Sahara.

If you book a trip to Las Vegas in advance, beware of the difficulty of trying to arrive on Saturday night. Many hotels do not accept Saturday arrivals. Gerry Lopez tells me that hotels leave rooms unoccupied so they can fill the rooms at \$100+ a night with Los Angeles visitors who come up for the weekend.

Summer in Las Vegas is quite hot, as one might expect. Nevertheless, I have walked the streets in daytime without any ill effects. While it is very warm, it is not unbearable due to the dry air.

One cannot discuss Las Vegas without mentioning all the casinos. When you step off the plane upon arriving, there are slot machines waiting for you in the gate area. Casinos are typically large and offer hundreds of various slot machines, as well as dealer games such as roulette, blackjack, craps, and keno.

Las Vegas has been known for cheap food and buffets. This is certainly true to some extent, if you know where the deals are. Overall, the food prices are reasonable and varied. Most hotels contain several restaurants ranging from fast food counters to sit-down places of varying price ranges. Hotels typically feature a few house specials. Many hotels have prime rib dinners for under \$10.00, 99-cent shrimp cocktails, or 99-cent hot dogs.

Many hotels contain a breakfast, lunch, and dinner buffet. Some are very cheap, given the quality of food. Buffets typically include carved ham and beef, several hot dishes, fresh fruits, numerous salads, pies, and other fancy desserts. The buffets vary quite a bit in size and price from hotel to hotel. Some of the larger buffets feature a particular cuisine, such as seafood, Asian, exotic dishes, etc. The Plaza Hotel has a “lucky” \$7.77 buffet price all day long. The Golden Nugget Hotel buffet moved to the 2nd floor (the price also went up) since my last 2005 visit. The Main Street Station hotel and Casino still has the best and biggest buffet of the downtown area, and it is only \$8 on weekdays for lunch.

Other new additions to Las Vegas:

A double-decker bus called “The Deuce” takes you up and down Las Vegas Boulevard and connects the new strip with Fremont St. An all day pass is \$5.

A “Half-price Tickets” booth is available at the Four Queens (and other places) for discount shows scheduled that day. The idea is for the hotels to try and fill up unused seats.

A new swimming pool was added to the Golden Nugget with an enclosed aquarium centerpiece. (Now you can really swim with the sharks!)

On Monday night of the 2007 National tournament, I paid to see a show by Larry Jones at Fitzgerald’s Hotel & Casino. He is dubbed as the man of 1001 voices. He does comedic singing impersonations of famous singers as well as vocal imitations of presidents and the like. He has an amazing powerful voice, no matter whom he impersonates.

I had already made trips to Grand Canyon and Hoover Dam in 2002. In September 2007, I made an attempt to get on a tour bus to Zion National Park and Bryce Canyon, both in Utah. However, the van trip fell through, as no one else signed up for the trip on that day. The reservationist suggested I try their day trip to the Valley of Fire for some alternate good scenery, so that’s what I did. The trip took us North of Las Vegas on I-15 past Nellis Air Force Base and a motor speedway complex and into the desolation of the Mojave Desert. Much of the scenery in Nevada consists of numerous brownish-gray mountains in the background. We took a turn down a two-lane highway where we entered a region where the rocks took on vibrant red colors and textures due to iron content and wind erosion. Our driver stopped several times for us to get out



and take pictures. Two stops featured a natural arch and other named, look-alike rocks, such as “Poodle Rock” (see upcoming picture). The stop at Atlatl rock (“atlatl” is a throwing tool used for hunting) featured a three-story staircase to scale a rock formation to the presence of petroglyphs, which are 4000-year-old hieroglyphic-like writings carved into rock by Indians. Another scenic spot was atop Rainbow Vista, where we could see multi-colored rocks for miles. At one stop we broke for a 20-minute hike through desert sand and rocks to get to the watering hole known as “Mouse’s Tank.” Mouse was a renegade Indian who murdered several people. He was able to elude capture by hiding out in the mountains near a natural cistern. Our last stop in the Valley of Fire was White Dome, which featured white-colored mountains and a nearby movie studio set. This area was featured in such films as *The Professional*, *Star Trek: Generations*, Stephen King’s *The Stand*, and Sheryl Crow’s music video for “*The First Cut is the Deepest*.”

While this area is home to various animals such as bighorn sheep, mountain lions, scorpions, etc, we didn’t see much wildlife other than several small lizards and small gray ground squirrels that were the size of a chipmunk. There were three other tourists beside myself on this trip – a Russian lady and two young Japanese men who didn’t speak much English. They seemed to enjoy the trip very much and eagerly took a picture of every little lizard we encountered. The trip cost \$119 and included the transportation to and from my hotel, lunch, and a museum ticket.

For my final day in Las Vegas in September 2007, I paid a visit to the center of the new strip of Las Vegas Boulevard. I stopped for lunch at the Rio Hotel & Casino (an off-strip hotel accessible by free shuttle). Their Carnival Buffet may be the biggest in Las Vegas. I must have walked a couple blocks to get from one end of the buffet to the other end and back! The lunch price was reasonable (\$16) given the selection.

I saw a comedy magic show at Harrah’s. Mac King normally does this performance, but a substitute performed this day. I also saw two of the free outdoor fountain shows at the massive lake in front of the Bellagio. For the evening, I attended Bally’s version of “The Price is Right” game show. This is an untelevised copycat of the long-running TV show. Tickets cost \$48, with members of the studio audience eligible to “come on down” to win prizes. The host for the show was Todd Newton who has some TV credits (Hollywood Showdown, Entertainment news). The stage, props, and games looked pretty much like the TV version of The Price is Right, but there were several differences. The value of prizes (cash or goods) was noticeably smaller than the corresponding prizes given away on the TV version. Also, a fresh set of contestants is called to come on down for every pricing game, wheel spin and showcase, which gives more people a chance to play. I never got called to come on down, but I still enjoyed watching Plinko, Cliffhanger, Hole in One, and the rest of the show. This concluded my most recent trip to Las Vegas, as I had to head straight to the airport from Bally’s (in a cold, driving rain, no less!).

Las Vegas is very excessive and glitzy and is not for everybody. However, I always enjoy the sights, and I certainly miss those buffets when I leave. Hopefully I will be back again someday. I wish to acknowledge Gerry Lopez for promoting multiple checker tournaments in Las Vegas and for making these experiences possible.

## 2007 “Derek E. Oldbury” GAYP National Tournament

50 selected games

### #1, Joe Schwartz – John Webster, round 1 g.2

11-15 22-17 8-11 17-14(A) 10-17 21-14 9-18 23-14 12-16 26-23 16-19 23-16 11-20 24-19 15-24 28-19 6-9 30-26 9-18 26-23 1-6 23-14 20-24(B) 27-20 6-9 14-10 7-14 25-22 4-8 32-27 8-11 27-23 3-7 19-16 11-15 16-12 14-18 23-14 9-25 29-22 7-10 12-8 10-14 8-3 5-9 3-8 9-13 8-11 14-18 31-26 18-25 11-18 25-30 18-23 13-17 20-16 2-7?(C) 23-19\*(D) 30-23 19-26 7-10 16-11 10-14(E) 11-7 14-18 7-2 WW

A – White Dyke.

B – 6-9 draw PP.

C – 30-25\* draw.

D – Pretty.

E – 10-15 26-23\* WW.

### #2, Michael Holmes – Rich Beckwith, round 1 g.1

11-15 22-17 9-14(A) 25-22 8-11 17-13 11-16(B) 24-20(C) 16-19(D) 23-16 12-19 27-23 19-24 28-19 15-24 32-28 7-11 28-19 11-15 19-16 15-19 16-11 19-24 23-19 24-28(E) 26-23 3-8(F) 11-7 2-11 19-16 11-15 16-12 8-11 22-17 28-32 12-8 15-18 23-19 11-15 19-16 4-11 16-7 32-28(G) 7-2 5-9 20-16 18-23 16-12 23-27 31-24 28-19 12-8 15-18 8-3 18-23 2-7 23-27 3-8 27-32(H) 8-11 32-27 30-25 19-23 25-22 27-31 22-18?(I) 31-27?(J) 18-15 10-19 17-10 6-15 13-6 1-10 7-14 WW

A – 9-14 22-17 11-15 in the three move deck.

B – Pioneer.

C – 24-19 draw PP.

D – 3-8 draw PP.

E – 14-18 draw, M. Tinsley – M. Chamblee, 1947 match g.9.

F – 28-32 was played first in the Freedman – Battersby game mentioned below.

G – 18-23 was played in the Freedman – Battersby game.

H – Neither player has much chance of winning, unless .... I guess it is natural to overplay this

ending. For example: 19-15 8-12 15-19 29-25 27-31 12-8 31-27 8-11? (8-12 draw or 25-22 draw) 10-15! 11-18 14-23 7-2 1-5 25-22 19-15 30-25 15-10 22-18 23-26 17-14 10-17 21-14 26-30 25-22 27-23 22-17 23-19 2-7 19-16 18-15 9-18 15-11 16-19 11-8 30-25 7-11 25-21 RW, H. Freedman – A. Battersby, 1898 match g.2.

I – White cannot do this while the king is on 11. 11-16 is probably a draw. But the players can shuffle pieces around for a very long time.

J – 10-15!! 17-10 23-14 11-18 6-22 13-6 1-10 RW.

### #3, Richard Hallett – Shane McCosker, round 1 g.2

11-15 22-17 15-19(A) 23-16 12-19 24-15 10-19 25-22 8-11 27-23(B) 6-10(C) 23-16 11-20 17-13(D) 9-14 22-17 4-8(E) 29-25 8-11 25-22?(F) 3-8?(G) 26-23 8-12?(H) 22-18 1-6 18-9 5-14 23-19?(I) 11-15 30-26 15-24 28-19 7-11 32-28 2-7 31-27 14-18 17-14 10-17 21-14 11-16 19-15 draw

A – The Dyke, also called the Black Dyke.

B – 30-25 draw PP.

C – 4-8 draw PP.

D – 22-18 draw PP.

E – = 11-16 22-17 16-19 23-16 12-19 24-15 10-19 25-22 8-11 17-13 9-14 22-17 6-10 27-23 4-8 23-16 11-20.

F – 26-23 may draw.

G – 11-15! 26-23 7-11 (2-6?! should draw, R. Martins – J. McKerrow, 1859 match) Red strong, draw in Kear’s Encyclopedia, p.93 v.49.

H – 1-6? WW E. Morrison – L. Adams, 1992 match; 11-15! draw.

I – 31-27 11-15 28-24 7-11 23-19 15-18 19-15 WW.

#### #4, Jim Morrison – Lubabalo Kondlo, round 1 g.1

11-15 23-19 8-11 22-17 4-8(A) 17-13(B) 15-18 24-20 9-14(C) 26-23(D) 11-15 28-24 8-11 31-26 6-9 13-6 2-9 26-22 1-6 22-17 18-22 25-18 15-22 23-18 14-23 27-18 9-13 17-14 10-17 21-14 6-10 30-25 10-17 25-21 22-25(E) 21-14 25-30 19-15 30-26 15-8 26-22 32-28 22-15 24-19 15-24 28-19 13-17 8-4 17-22 19-15 22-26 4-8 26-30 15-10(F) 30-26 29-25(G) 26-23(H) 10-6 23-18 6-2 18-9 2-11 9-14 8-4 14-18 4-8 18-14 11-15 12-16 20-11 3-12 11-7 12-16 7-2 16-20\* 2-7 20-24 25-22 24-28 15-10 14-9 22-18 28-32 10-14 draw

A – Old 14th.

B – About as popular as 25-22.

C – 11-15 draw PP.

D – Or 28-24 draw in *Basic Checkers*.

E – Or 22-26 to same.

F – Draw, J. Sturges 1800.

G – 10-6 draw, J. McInnes – R. Petterson, 1884 Scotland vs. England.

H – 26-30 should draw, but was played to a very long WW, R. Yates – J. Wyllie, 1873 match.

#### #5, Lubabalo Kondlo – Jim Morrison, round 1 g.2

11-15 23-18 15-19(A) 24-15 10-19 27-24 7-10 24-15 10-19 32-27(B) 3-7 27-24 7-10 24-15 10-19 31-27 2-7 21-17 12-16 27-24 7-10 24-15 10-19 17-13 8-12 25-21(C) 19-23 26-19 16-23 28-24 23-27 24-19 27-31 19-15 31-27 15-10 6-15 13-6 1-10 18-11 27-23 11-7 10-15 7-2 15-19(D) 22-17(E) 19-24 29-25 23-18 17-13 24-27 21-17 18-15 25-21 15-11 13-9 5-14 17-10 27-31 30-25 31-27 25-22 27-23 10-6 11-15 6-1 23-18 22-17 draw

A – Montrose Cross.

B – “Inferior” to 21-17, R. Fortman in *Basic Checkers*.

C – 22-17 draw, P. Semple – W. Ryan, 1938 in *Basic Checkers*.

D – 4-8 draw, E. Morrison – J. Morrison, 2005 GAYP Nat.

E – 2-7 draw, D. Shields – M. Murphy, 1984 Irish Open.

#### #6, Paul Bryan – Jack Francis, round 1 g.2

11-15 24-20 15-19(A) 23-16 12-19 22-18 9-14 18-9 5-14 25-22 10-15 22-17 6-10 27-24(B) 8-11 32-27 4-8 29-25 8-12 17-13 11-16(C) 20-11 7-16 25-22(D) 14-18(E) 24-20(F) 18-25 20-11 10-14(G) 27-24 12-16 24-20 1-6 11-8 3-12 20-11 6-10 13-9 19-24 28-19 15-24 9-5 12-16 5-1 16-20(H) 1-5 14-18 21-17 25-29(I) 5-9 24-27(J) 31-24 20-27 26-23 18-22 9-14 10-15 14-10 27-32 10-19 22-26 17-13 26-31 19-15 31-26 23-18 26-22 18-14 32-27 14-9 27-23 9-6 2-9 13-6 WW(K)

A – = 11-16 24-20 16-19, Bristol.

B – 29-25 draw PP.

C – 1-5 draw PP.

D – 24-20 draw, L. Cowie – B. Martin, 1974 Lakeside

E – 1-6 draw.

F – 21-17!! 18-25 30-21 16-20 17-14 10-17 21-14 12-16 26-22 WW, as Red must dismantle most of his back row.

G – 12-16 21-17 16-20 30-21 19-24 may be interesting.

H – The wrong move order. 25-29 1-5 29-25 11-8 16-20 5-9 14-18 21-17 25-21\* seems to draw.

I – 24-27 also loses.

J – 18-22 also loses.

K – Further moves were incomplete on the scoresheet.

#### #7, Richard Hallett – Lubabalo Kondlo, round 2 g.1

11-15 23-19 8-11 22-17 11-16(A) 24-20 15-24 20-11 7-16 27-11 3-7 11-8!(B) 4-11 17-13 11-15(C) 25-22 9-14 22-17(D) 15-19(E) 31-27(F) 7-11 27-24(G) 11-16 24-15 10-19 17-10 6-15 32-27 1-6 21-17 6-10 29-25 16-20 27-23 19-24 28-19 15-24 23-18 24-27 26-22 27-31 18-14 10-15 25-21 31-27 14-9 5-14 17-10 27-23 10-6 2-9 13-6 23-19 22-17 15-18 17-14 18-23 6-2 23-27 draw

A – Glasgow.

B – Not bad, but read this typical comment: “the

novice should never throw the piece 11-8, as it leads to a very weak game for White,” Lees’ *Guide*.

**C** – Or 9-14 first.

**D** – 29-25 draw, M. Lieber – R. Scobbie, 1927 IM. 31-27 “WW,” J. Francis – L. Kondlo in round 4, but the position is a published draw (the Bruch – Chinook game mentioned below), so the WW probably happened later.

**E** – 7-11 draw PP in *Basic Checkers*.

**F** – 32-27 draw, A. Cameron – M. Tinsley, 1950 U.S. Nat.

**G** – 27-23 draw, E. Bruch – Chinook, 1992 Southern Open.

**#8, Lubabalo Kondlo – Gene Lindsay, round 3 g.2**

11-15 22-17 8-11 17-14(**A**) 9-18 23-14 10-17 21-14 12-16 26-23(**B**) 16-19 23-16 11-20 24-19 15-24 28-19 6-9 30-26 9-18 26-23 18-22(**C**) 25-18 7-10 29-25 5-9 25-21 9-13 31-26 4-8 19-15 10-19 23-16 1-6 18-14 13-17 16-11 8-15 14-10 17-22 26-17 6-9 17-14 draw(**D**)

**A** – White Dyke.

**B** – 25-22 draw PP.

**C** – This may be new. 1-6 draw PP.

**D** – Nice ending.

**#9, Jim Morrison – Rich Beckwith, round 3 g.1**

11-15 22-17 9-14(**A**) 25-22 8-11 17-13 11-16(**B**) 24-19 15-24 28-19 4-8 22-18 8-11 18-9 5-14 29-25 16-20 25-22 11-16 22-18 1-5(**C**) 18-9 5-14 26-22 14-17 21-14 10-26 31-22 7-10 22-18 3-8 30-25 8-11 18-15 11-18 23-7 16-23 27-18 2-11 18-14 20-24 25-22 24-28(**D**) 22-17 11-16(**E**) 14-9 6-10 9-6 10-15 6-2 16-20(**F**) 2-7 12-16 7-11 15-18\* 11-15 18-22\* 15-18 22-26\* 13-9(**G**) 26-31\* 18-23(**H**) 31-27\* 23-26 27-24\*(**I**) 9-6 16-19\* 26-30(**J**) 19-23\* 6-2 24-19\* 2-7 19-15 17-13 23-27 32-23 28-32\* draw(**K**)

**A** – = 9-14 22-17 11-15.

**B** – Pioneer.

**C** – 14-17 draw PP.

**D** – Reisman’s *Pioneer* says “deBearn lost to H. Clifton by 24-28,” but this is a published draw. Reisman’s 12-16 is probably an easier draw.

**E** – 12-16 in the Oldbury – H. Burton game mentioned below.

**F** – 15-18 draw PP.

**G** – 18-23 should draw, the Davis – Tinsley game mentioned below.

**H** – 18-22 draw, D. Oldbury – H. Burton, 1983 IM.

**I** – 27-31? 26-30 WW, P. Davis – M. Tinsley, 1989 WCM g.12.

**J** – 26-22 draw, J. McGill – A. Long, 1973 IM.

**K** – A nice version of this elusive draw.

**#10, Michael Holmes – Joe Schwartz, round 3 g.2**

9-14 22-18 5-9(**A**) 25-22 11-16 18-15 10-19 24-15 7-10 27-24 10-19 24-15 16-19 23-16 12-19 22-17 14-18 17-13 9-14 29-25 8-12 31-27(**B**) 4-8(**C**) 27-24 18-23(**D**) 24-20 2-7(**E**) 20-16 7-11?(**F**) 16-7 3-10 28-24 19-28 26-19 14-18 21-17 18-23 25-21 8-11 15-8 10-14 17-10 6-24 8-3 24-27 3-7 27-31 7-11 31-26 11-15 12-16 21-17 16-20 WW(**G**)

**A** – Double Corner.

**B** – 26-22 draw PP.

**C** – 12-16 draw PP.

**D** – 3-7 24-20 7-11 draw, Kear’s *Encyclopedia*, p.349 note W.

**E** – 23-27! draw, planning 14-18-23, threatens to

win.

**F** – 6-10 15-6 1-10 25-22 14-17 draw.

**G** – Several moves later, the WW was adjudicated by computer. At this position, I have confirmed this WW on the Chinook WWW site.

**#11, Keith Weaver – Michael Holmes, round 4 g.1**

11-15 22-18 15-22(**A**) 25-18 10-14(**B**) 24-19 8-11 28-24(**C**) 6-10(**D**) 24-20(**E**) 9-13(**F**) 18-9 5-14(**G**) 29-25 11-15 19-16 12-19 23-16 7-11(**H**) 16-7 2-11 25-22(**I**) 14-18 22-17 13-22 26-17 18-22(**J**) 17-14(**K**) 10-17 21-14 3-7?(**L**) WW(**M**)

**A** – Single Corner.  
**B** – Rare, but Holmes had seen it twice before.  
**C** – 27-24 draw, J. P. Reed – C. F. Barker, 1891 match g.16.  
**D** – 9-13 draw, L. Ginsberg – A. Jordan, 1922 ACA Nat.  
**E** – = 11-15 24-20 8-11 28-24 10-14 22-18 15-22 25-18 6-10 24-19 in Robertson's *Guide*. Or 29-25 draw, W. Campbell – F. Brown, 1898 Scottish Ty. and later W. Fraser – T. Wiswell, 1956 GAYP WCM g.38 and M. Holmes – D. Brattin, 2004 Kentucky Ty. and others. Or 26-22, R. Shuffett – M. Holmes, 2004 Indiana Ty.  
**F** – 3-8 draw, several J. Wyllie – J. Robertson

games, in Robertson's *Guide* and played in both the 1905 IM and the 1927 IM.  
**G** – = 9-13 24-19 11-15 28-24 6-9 22-18 15-22 25-18 9-14 18-9 5-14 24-20 (or 29-25 8-11 24-20, also into the above game) 8-11.  
**H** – May be new. Somewhat stronger is 15-18 draw in Kear's *Encyclopedia*, p.443 v.17.  
**I** – 26-23 may be stronger, but it seems to draw.  
**J** – Or 18-23 draw.  
**K** – 27-23 may be somewhat stronger.  
**L** – Too bad. A good game to here. 15-19 draw.  
**M** – Continue 31-26 WW.

#### #12, Anatoliy Raevskyy – Alan Millhone, round 4 g.1

11-15 22-17 8-11 25-22 3-8(**A**) 29-25 15-19 24-15(**B**) 10-19 23-16 12-19 27-23(**C**) 8-12 23-16 12-19 17-14(**D**) 9-18 22-8 4-11 31-27(**E**) 6-10 27-23 5-9 23-16 11-20 26-23 9-14 23-19 1-5 19-16 7-11 16-7 2-11 25-22 5-9 30-26?(**F**) 9-13?(**G**) 26-23 10-15 32-27 11-16 28-24 16-19 23-16 14-18 24-19 15-31 22-15 draw

**A** – = 10-15 22-17 7-10 25-22 3-7. 9-13 is the Switcher, and is stronger.  
**B** – In *Basic Checkers*, this exchange is represented by the ambiguous "etc."  
**C** – 22-18 draw, W. Hellman – B. Case, 1963 WCM g.29.  
**D** – = 11-16 22-18 7-11 25-22 3-7 29-25 16-19 24-15 10-19 23-16 12-19 27-23 8-12 23-16 12-19

18-14.  
**E** – 21-17 draw, B. Case – M. Tinsley, 1954 U.S. Nat.  
**F** – 32-27 draw.  
**G** – 11-15!! 32-27 14-18 22-17 18-22 26-23 9-14 28-24 22-26 17-13 26-31 13-9 31-26 23-19 14-18 RW.

#### #13, Rich Beckwith – Anthony Bishop, round 4 g.2

11-15 24-20 8-11(**A**) 28-24 9-13(**B**) 23-19 6-9 26-23(**C**) 9-14 22-18 15-22 25-9 5-14 29-25 3-8(**D**) 31-26(**E**) 1-6(**F**) 25-22 6-9 23-18?(**G**) 14-23 27-18 11-16?(**H**) 20-11 7-23 26-19 10-14 18-15 14-18 30-25 18-23 15-11 8-15 19-10 23-26 22-18 26-30 10-6 12-16?(**I**) 6-1 13-17(**J**) 21-5 30-21 18-14 21-17 14-9 17-14 1-6 4-8(**K**) 5-1 14-5 24-20 2-9 20-4 WW

**A** – Ayrshire Lassie.  
**B** – 4-8 draw PP.  
**C** – Nemesis' opening book suggests that this is weak. 27-23 draw PP.  
**D** – Recommended in Nemesis' book. 11-15 Red strong PP.  
**E** – 23-18? RW C.R., W. Harkins – K. Lovell, 2003 English Open.

**F** – 11-15 is also strong.  
**G** – 20-16!! 11-20 32-28 2-6 19-16 draw.  
**H** – 10-14 26-23 7-10 RW.  
**I** – 13-17! draw or 9-14! first.  
**J** – A nice try. Others lose.  
**K** – Others lose.

#### #14, Richard Hallett – Jim Morrison, round 4 g.1

11-15 23-18 8-11(**A**) 27-23 10-14 23-19(**B**) 14-23 19-10 7-14 26-19 6-10(**C**) 32-27 11-16(**D**) 19-15 10-19 24-15 4-8(**E**) 22-17(**F**) 14-18 25-22 18-25 29-22 16-19 30-26 12-16 27-23 8-12(**G**) 22-18(**H**) 16-20 23-16 12-19 17-14 2-7 15-10 7-11 21-17 19-23?(**I**) 26-19 9-13 10-7 13-22 7-2 22-25 14-10 25-30 2-7 11-16 19-12 30-25 7-2 25-22 18-15 22-18 15-11 5-9 11-8 9-13 8-4 18-23 2-7 23-19 31-27 1-5 7-11 19-16 11-15 WW



A – Cross.  
 B – Or 22-17 draw PP.  
 C – 11-16 draw PP.  
 D – 11-15 draw PP.  
 E – 16-19 in the Lowder – Morrison game mentioned below.  
 F – 30-26 in the King – Morrison game mentioned

below.  
 G – 1-6 draw, E. Lowder – J. Morrison, 2003 GAYP Nat.  
 H – 15-11 draw, R. King – J. Morrison, 1991 GAYP WCM g.4.  
 I – 9-13 draw.

#### #15, Joe Schwartz – Paul Bryan, round 4 g.2

11-15 24-20 8-11(A) 28-24 9-14(B) 22-18(C) 15-22 25-9 5-14 29-25(D) 11-15 23-19?(E) 4-8 25-22 8-11 27-23 6-9 32-28 9-13(F) 22-17 13-22 26-17 15-18?(G) 19-15?(H) 18-27 15-8 7-11 8-4 12-16 30-26 27-32 26-23 32-27 24-19 27-18 19-12 18-22 17-13 1-6 28-24 22-18 24-19 11-15 19-16 15-19 31-26 19-24 4-8 24-27 8-11 27-32 26-22 18-25 11-7 2-11 16-7 14-17 RW

A – Ayrshire Lassie.  
 B – 4-8 draw PP.  
 C – 22-17 draw PP.  
 D – 26-22 draw PP.  
 E – 32-28 may draw.  
 F – Converging upon a very popular published RW.  
 = 11-15 24-20 8-11 28-24 9-13 23-19 6-9 27-23 9-14 22-18 15-22 25-9 5-14 29-25 11-15 25-22 4-8 32-28 8-11. = 10-14 24-19 6-10 27-24 9-13 22-18 5-9 25-22 11-15 18-11 8-15 24-20 15-24 28-19 4-8

22-18 1-5 29-25 8-11 25-22 C.R. And other openings, see *Basic Checkers* vol. 1 p.37 note G and p.57 note C, and many games over the years, many of which ended in draws. 1-5 should probably have lost, H. Grant – E. Lowder, 1974 Florida Open.  
 G – 12-16!! 19-12 15-18 RW in McCulloch's *Anderson*, p.3 v.7.  
 H – 19-16 18-27 30-26 seems to draw, E. Lowder – K. Albrecht, 1986 Northern States.

#### #16, Anthony Bishop – Shane McCosker, round 5 g.1

11-16 23-18(A) 16-20 26-23(B) 8-11 22-17(C) 9-14 18-9 5-14 25-22 11-15 29-25 7-11(D) 17-13 3-8?(E) 22-17 11-16 23-19 16-23 27-9 20-27 32-23 15-19 23-16 12-19 17-14 10-17 21-14 19-23 9-5 8-12 (F) 14-9 12-16 28-24 4-8 24-19 16-20 19-16 23-27 31-24 20-27 16-12 8-11 12-8 27-31 8-3 31-27 3-7 11-16 25-22 2-11 9-2 16-19 22-18 19-23 2-7 11-16 18-14 WW

A – Bristol Cross.  
 B – 24-19 draw PP.  
 C – 24-19 draw PP.

D – Or 15-18 draw PP.  
 E – 4-8 draw PP.  
 F – 6-9 loses.

#### #17, Jim Morrison – John Webster, round 5 g.2

11-15 22-17 9-14(A) 25-22 8-11 29-25 11-16 23-18 14-23 27-11 16-19 24-15 10-19 22-18 7-16 25-22 3-7 18-14(B) 4-8 31-27(C) 16-20 22-18 8-11 26-23 19-26 30-23 6-9(D) 14-10 7-14 17-10 9-14 18-9 5-14 10-7 11-15 7-3 15-18 21-17 14-21 23-14(E) 21-25 3-8 2-6 8-11 25-30\* 27-23 30-26 23-19 1-5 32-27 26-30 11-15 30-25\* 15-18 25-21\* 18-22 6-9 14-10 9-13\* 10-6 5-9 6-2 9-14\* 22-26 14-18\* 26-31 18-22 27-23 21-17 31-27 draw(F)

A – = 9-14 22-17 11-15.  
 B – 18-15 draw PP.  
 C – 22-18 draw, E. Hunt in *Basic Checkers*, vol. 2 p.10 note E.  
 D – 11-15 draw, L. Dibble – J. Webster, 1993

GAYP Nat.  
 E – The asterisks that follow were provided by Chinook.  
 F – Good defense by Red.

**#18, Alan Millhone – Clayton Nash, round 5 g.1**

11-15 22-18 15-22(A) 25-18 12-16 29-25 16-20(B) 24-19(C) 9-13(D) 26-22(E) 8-11 30-26(F) 4-8(G) 28-24 8-12 32-28 11-16 19-15 10-19 24-15 16-19 23-16 12-19 18-14(H) 13-17 22-13 6-9 13-6 2-18 21-17 20-24(I) 27-20 18-23 26-22 23-26 25-21 26-30 15-10?(J) 7-14 17-10 30-25 22-17 25-22 17-13 22-18 31-27 19-23?(K) 21-17 23-32 17-14 18-9 13-6 32-27 6-2\* 27-23 2-7?(L) 23-18 7-11 5-9\* 28-24 9-13 24-19 13-17\* 20-16 17-21 16-12 21-25 19-16 25-30 11-7 30-25?(M) 12-8 3-19 10-6 draw

A – Single Corner.

B – 9-13 draw PP.

C – “18-14 is easy for White,” J. Duffy.

D – 8-11 draw PP.

E – 28-24 draw PP.

F – 19-16 should draw, R. Martins – J. Wyllie, 1872 WCM g.40 or 31-26 should draw, R. Martins – J. Wyllie, 1872 WCM g.27.

G – 10-15 should draw, V. Monteiro – W. Ryan, 1929 Cedar Point Nat.

H – Or 27-23 draw.

I – I think that Red has the better winning chances after this. Or 1-6 draw.

J – 20-16 and 15-11 probably draws.

K – 18-14 RW.

L – 28-24\* 23-18 20-16 18-15 2-6\* 15-18 6-2\* 5-9 24-20\* 9-13 16-12 18-15 20-16\* draw.

M – 18-22, heading for 13 and then 9, wins, with some care.

**#19, Michael Holmes – Lubabalo Kondlo, round 5 g.2**

11-15 23-19 8-11 22-17 11-16(A) 24-20 16-23 27-11 7-16 20-11 3-7 11-8 4-11 17-13 11-16 25-22 10-15 31-27(B) 16-19 22-17 7-10 29-25 9-14 27-24 15-18(C) 24-15 10-19 17-10 6-15 21-17 12-16 17-14 16-20 14-10 19-24 28-19 15-24 25-22 18-25 30-21 24-28\* 21-17(D) 20-24\* 26-22 24-27\* 32-23 28-32\* 23-19 32-27\* 19-16 27-23 16-11 23-26?(E) WW

A – Glasgow.

B – 22-17 draw, R. Bailey – T. Laverty, 1984 U.S. Nat.

C – 5-9 draw, D. Lorde – R. Beckwith, 2004 Barbados vs. USA and J. Francis – R. Beckwith, 2005 GAYP Nat. or 12-16 should draw, G.

Buchanan – A. Jackson, 1903 Scottish Ty.

D – 26-22 also draws to the same sacrifice.

E – 23-19!! 10-7 2-6\* 7-3 19-15\* 3-8 15-10\* 8-3 5-9 11-7 9-14 7-2 14-21 2-9 1-5 draw!

F – From here, several moves are missing from the scoresheets.

**#20, Lubabolo Kondlo – John Webster, round 6 g.1**

11-15 22-17 8-11 17-14(A) 9-18 23-14 10-17 21-14 12-16 26-23(B) 16-19 23-16 11-20 24-19 15-24 28-19 6-9 30-26 9-18 26-23 18-22(C) 25-18 7-10 29-25 5-9 25-21 9-13 31-26 4-8 19-15 10-19 23-16 2-7(D) 16-12 1-6 18-14 13-17 27-24 20-27 32-23 8-11 14-9 6-13 21-14 13-17 23-18 11-16 18-15 16-19 14-9 19-24 26-23 24-27 draw

A – White Dyke.

B – 25-22 draw PP.

C – See L. Kondlo – G. Lindsay in round 3.

D – 1-6 was played in the Kondlo – Lindsay game. Webster may have seen that game.

**#21, John Webster – Lubabolo Kondlo, round 6 g.2**

11-15 21-17 9-13(A) 25-21 5-9(B) 23-18(C) 12-16 18-11 8-15 24-20 16-19 27-23 19-24 28-19 15-24 23-18 10-14 17-10 7-23 26-19 6-10 22-18 10-14 18-15 14-18 15-11(D) 18-23 29-25 23-27 32-23 24-28 23-18 28-32 19-15 32-28 30-26 28-24 26-23 24-28 25-22 28-24 21-17(E) 2-6 31-26 24-27 17-14 3-8 14-5 13-17 22-13 6-9 13-6 1-19 23-16 8-31 draw(F)

A – Switcher.

B – 8-11 draw PP.

C – Or 29-25 draw PP.

D – Webster has been here before. Also see the two games below:

D1 – 20-16? (this is apparently considered the loser,

but it may draw) 18-23 15-10? [29-25 9-14 (23-27 draw?) 15-10 14-18 (4-8 draw?) 16-11 1-5 31-26 seems to draw] 2-7 19-15 7-14 15-10 14-18 31-26 24-27 26-19 9-14 32-23 18-27 16-11 27-31 11-7 31-27 7-2 27-23 19-16 4-8 2-6 14-18 6-9 18-22 21-17 22-26 RW, N. Banks – W. Ryan, 1937 2nd blindfold match g.6

**D2** – 19-16 18-23 (draw, Kear's *Encyclopedia*, p.392 note C) 16-11 1-5 32-28 23-27 28-19 3-7 draw, H. Burton – E. Bruch, 1982 U.S. Nat.

## #22, Keith Weaver – Ron King, round 6 g.1

11-15 24-19 15-24(**A**) 27-20(**B**) 8-11 22-18 9-14(**C**) 18-9 5-14 25-22(**D**) 11-15 31-27 7-11(**E**) 22-17 4-8 28-24 15-18(**F**) 17-13 11-15 21-17 14-21 23-7 2-11(**G**) 27-23 1-5?(**H**) 32-28?(**I**) 6-10?(**J**) 23-19 12-16 19-12 15-18 26-22 18-25 29-22 10-14 22-17 14-18 24-19 WW(**K**)

**A** – Second Double Corner.

**B** – A favorite of King's.

**C** – 10-15 draw PP.

**D** – 26-22 draw, D. Oldbury – R. King, 1992 match g.8.

**E** – May be stronger than 6-9, J. Horr – C. Nelson, 1912 ACA Nat.

**E** – 15-10! 24-28 18-15 (21-17! 2-6 10-7 3-10 11-7 1-5 7-3 28-24 23-19 draw as verified by Chinook) 9-14 22-18 1-5 18-9 5-14 10-6 2-9 15-10 3-8 11-7 8-11 7-2 11-15 10-6 15-18 23-19 18-22 19-15 13-17 6-1 9-13 2-7 22-26 31-22 17-26 15-11 draw, J. Webster – K. Albrecht, 2005 GAYP Nat.

**F** – A pretty game.

**F** – 6-9 17-13 2-6 may be stronger.

**G** – 3-10 may be stronger.

**H** – 3-7 seems to draw.

**I** – 23-19 seems to win.

**J** – 3-7 probably draws.

**K** – A little ragged.

## #23, Ron King – Keith Weaver, round 6 g.2

11-15 23-18 8-11(**A**) 27-23 4-8 23-19 10-14 19-10 14-23 26-19 6-15(**B**) 19-10 7-14 24-19(**C**) 11-16(**D**) 22-17(**E**) 16-23 17-10 12-16 21-17 9-13 17-14 16-19 25-22 8-11 29-25 11-16 22-18 13-17 14-9 5-14 18-9 17-21 31-26 16-20 26-22 19-24(**F**) 28-19 23-26 30-23 21-30 22-18 30-26 18-15 26-31 10-6(**G**) 1-10 15-6 31-27 23-18 27-23 18-14 23-16 6-1 16-11 1-6 11-15\* 6-1 3-8?(**H**) 1-6?(**I**) 8-12 14-10 15-18 6-1 18-14 1-5 14-7 9-6 2-9 5-14 RW

**A** – Cross.

**B** – 7-14 draw PP.

**C** – 30-26 draw in *Basic Checkers* or 22-17 PP.

**D** – 3-7 draw, W. Kilgour – J. Hanson, 1927 IM.

**E** – Interesting. 19-15 should draw, A. Robinson – R. Yates, 1878 *Yates Checker Player* and others, including R. Stewart – R. Jordan, 1897 WCM g.22.

**F** – 20-24 probably draws.

**G** – 19-16 and 23-19 draws.

**H** – 3-7 RW.

**I** – 9-5\* 15-18 14-9\* 8-11 1-6\* 18-14 5-1\* 14-5 6-10\* 5-9 (20-24 10-7\* 11-15 32-28 draw) 1-5\* 9-13 10-14\* 11-15 5-1\* 15-19 14-18\* draw.

## #24, Richard Hallett – Paul Bryan, round 6 g.1

11-15 24-20 8-11(**A**) 28-24 9-14(**B**) 22-18(**C**) 15-22 25-9 5-14 26-22 6-9 30-25(**D**) 2-6(**E**) 22-18 10-15 32-28 15-22 25-18 7-10 29-25 3-8 25-22 10-15 24-19 15-24 28-19 11-16 20-11 8-24 27-20 6-10 22-17 9-13 18-9 13-22 9-6 10-15 6-2 15-19 23-16 12-19 2-7 19-23(**F**) 7-11 23-26\* 11-15 26-30 15-18 30-25 18-23 25-30 20-16 4-8 23-19 8-12\* 16-11 1-6 11-7 6-9 7-2 9-14?(**G**) 19-23 WW

**A** – Ayrshire Lassie.

**B** – 4-8 draw PP.

**C** – 22-17 draw PP.

**D** – 22-17 draw, M. Tinsley – D. Lafferty, 1979 practice.

**E** – 10-15 may be strong, as it seems to prevent 22-18.

**F** – 19-24, now or later, is much easier.

**G** – Loses the piece. Almost any other move draws.

**#25, Paul Bryan – Richard Hallett, round 6 g.2**

9-14 22-17 11-15 25-22 15-19(A) 24-15 10-19 23-16 12-19 17-10 6-15 21-17 5-9 17-13 2-6(B) 29-25(C) 7-10 25-21 8-12 22-17(D) 9-14(E) 27-23(F) 4-8 23-16 12-19 31-27 8-12?(G) 27-24 14-18(H) 17-14 10-17 21-14 6-10 14-7 3-10 13-9 10-14 WW

A – Double Corner Dyke.

B – Or 1-6 draw PP.

C – Or 20-25 draw PP.

D – 27-23 draw PP.

E – Or others.

F – 27-24 draw, E. Lowder – R. Hallett, 1980 U.S.

Nat.

G – Into a classic loss. 8-11 27-24 1-5 32-27 11-16 draws.

H – 3-8 32-27 8-11 27-23 a very popular WW, R. Martins – W. Beattie, Kear's *Encyclopedia*, p.327 v.10, which has sometimes resulted in draws.

**#26, Paul Bryan – Rich Beckwith, round 7 g.1**

9-14 22-17 11-15 25-22 15-19(A) 24-15 10-19 17-10 6-15 23-16 12-19 21-17 5-9 27-24(B) 2-6 22-18 15-22 24-15 9-13 32-27 7-11 26-23 11-18 23-14 6-10(C) 14-7 3-10 27-23 1-6 23-18 6-9 30-25!(D) 8-11?(E) 17-14 10-17 25-21 WW

A – Double Corner Dyke.

B – Or 17-13 draw PP.

C – 1-5 draw, N. Banks – A. Jordan, 1917 WCM g.33.

D – 28-24 draw, T. Laverty – C. Crawford, 1989

Florida Open.

E – The scoresheet gives this a question mark. Here's why: 22-26!! 31-22 10-15!! 18-11 8-15 28-24 4-8 25-21 8-11 24-20 15-19 draw.

**#27, Clayton Nash – Richard Hallett, round 7 g.1**

11-15 22-17 9-13 24-20(A) 13-22 25-11 8-15 21-17 5-9 17-13 9-14 29-25 15-18(B) 23-19(C) 4-8 26-23(D) 1-5(E) 31-26 8-11 28-24 14-17(F) 23-14 6-9(G) 13-6 2-18 26-22(H) 17-26 30-14 10-17 25-21 17-22 27-23 22-26 23-18 26-30 32-28 30-26 19-16 12-19 24-8 3-12 18-15 26-22 15-11 7-16 20-11 22-18 11-8 5-9 8-4?(I) 12-16\* 4-8 16-20 8-11 9-13 11-16 18-23 16-12 23-19 12-8 20-24 RW

A – Wagram.

B – 4-8 draw PP.

C – Or 28-24 draw PP.

D – Or 27-24 draw PP.

E – 6-9 draw, R. Ward, Kear's *Encyclopedia*, p.450 v.7 or 7-11, A. Moiseyev – R. Hallett, 2005 GAYP Nat.

F – 6-9? WW, A. Scott – N. Banks, 1927 IM.

G – Draw, T. Graham, Kear's *Encyclopedia*, p.450 note R.

H – 25-22 18-25 30-14 10-17 32-28 draw, M. Holmes – R. Hallett in round 12.

I – 28-24\* draw.

**#28, Lubabalo Kondlo – Shane McCosker, round 7 g.2**

11-15 23-19 9-13(A) 22-18 15-22 25-18 7-11(B) 19-15 10-19 24-15 12-16 29-25 5-9(C) 26-23(D) 2-7(E) 30-26 7-10 27-24 10-19 24-15 3-7 32-27 16-19 23-16 11-20 25-22 7-11 26-23 6-10 15-6 1-10 22-17 13-22 18-14 10-17 21-5(F) 22-25 5-1 25-30 1-6 30-25 6-10 25-22 23-19 8-12\* 10-7 11-16\* 19-15 4-8\* 15-10 8-11 10-6 22-25 6-2 25-30?(G) 2-6 11-15 7-11 15-18 11-15 18-22 15-18 22-25 6-10 25-29 10-14 29-25 27-23(H) 25-21 draw?(I)

A – Will o' the Wisp.

B – 10-14 draw PP.

C – 6-9 draw PP.

D – 26-22 draw PP.

E – 1-5 draw in both Lees' *Guide* and Kear's *Encyclopedia*.

F – Draw in Chinook's 10 piece database. Chinook contributed the following asterisks.

G – 25-21\* draw, Chinook.

H – Easier is 28-24 25-21 18-23 21-25 WW, as White trades off one pair of kings soon, L. Dibble – H. Maine, 1961 Davis Mail Ty.

I – White may have planned to trade kings now, but that draws. Nevertheless, this position is a WW. Continue 23-19\* 16-23 18-27 30-25 14-18\* 21-17

28-24\* 17-22 18-23\* 22-17 24-19 17-14 19-15\* 25-22 23-19 may be easiest, as now both of White's pieces can king.

**#29, John Webster – Rich Beckwith, round 8 g.1**

11-15 23-19 9-14 27-23(A) 5-9(B) 22-18 15-22 25-18 7-11 32-27(C) 11-16 24-20(D) 3-7 20-11 7-16!?(E) 27-24 16-20 29-25 20-27 31-24 8-11 25-22 10-15 19-10 6-15 24-20 1-6!!(F) 20-16! 11-20 18-11 6-10 22-17 9-13 26-22 12-16 30-26 2-6 11-7 16-19 23-16 14-18 22-15 13-31 15-11 6-9 7-2 9-13 draw(G)

A – Defiance.

B – 8-11 draw PP.

C – 26-22 draw PP.

D – This and the previous move make up a favorite variation of E. Lowder's. See my Lowder book, g.152 for several of these games.

E – Assumed to be a loss in my book, but it seems to draw, as shown in this game. This may be the

easiest draw, as White's impressive attack may be very narrow. 8-22 draw PP.

F – I ignored this move in my book, because the answering 20-16! seemed to win. 12-16? 21-17!! is the WW shown in my book, J. Morrison – E. Lowder, 1987 GAYP Nat.

G – A beautiful draw by Dr. Webster, perhaps prepared in advance.

**#30, Michael Holmes – Alan Millhone, round 8 g.1**

11-15 22-17 9-14 25-22 8-11 23-19 6-9 17-13 2-6(A) 29-25 4-8 24-20 15-24 28-19 11-15 27-24 14-17 21-14 9-18 22-17?(B) 5-9\* 17-14(C) 10-17 19-10 7-14 24-19(D) 18-22?(E) 25-18 14-23 31-27?(F) 17-22! 26-17 RW

A – Souter.

B – Published to lose by J. Sturges in 1800. 26-23 draw PP.

C – Others lose.

D – 26-22 RW J. Sturges, as shown in Lees' *Guide*.

E – 17-22 RW, J. Sturges. Other moves win.

F – 19-15 draw.

**#31, Anatoliy Raevskyy – Paul Bryan, round 8 g.1**

11-15 24-20 15-19(A) 23-16 12-19 22-18 9-14 18-9 5-14 25-22 10-15 22-17 7-10(B) 27-24(C) 8-12(D) 32-27 4-8 29-25(E) 8-11(F) 17-13 1-5(G) 25-22(H) 14-18 22-17 3-7(I) 26-23 19-26 30-14 15-18(J) 20-16! 11-20 24-19 12-16!(K) 19-12 18-22 12-8 6-9?(L) 13-6 2-18 8-3 22-25 27-24 20-27 31-24 18-23 17-14 10-17 21-14 7-11 24-19 23-27 3-8 WW

A – = 11-16 24-20 16-19, Bristol.

B – 6-10 draw PP.

C – 20-16 draw PP.

D – 2-7 draw PP.

E – 17-13 draw, J. Ferrie – G. Bonar, 1901 Scottish Ty.

F – 3-7 draw PP.

G – 3-7 draw, Lees' *Guide*, p.211 trunk.

H – 27-23 draw, C. F. Barker – H. Zink, 1907 U.S. Nat.

I – 18-22 draw.

J – 12-16 (6-9 should have drawn, N. Rubin – A. Long, 1929 Cedar Point Nat.) 14-9 5-14 27-23 15-18 24-19 draw.

K – 18-22? 19-15 WW.

L – A good game to here. 22-26 first draws.

**#32, Clayton Nash – Ron King, round 8 g.1**

11-15 22-18 15-22(A) 26-17?(B) 9-14(C) 25-22 8-11 24-20 5-9 17-13 10-15 28-24 7-10 22-17 15-18 24-19?(D) 18-22 27-24 11-15 30-25 22-26(E) 31-22 3-7?(F) 20-16 15-18 22-15 7-11 16-7 2-27 32-23 4-8 25-22 8-11 22-18 10-15 17-10 15-22 23-18 WW

A – Single Corner.

B – Weak. King played this again in the next

round.

C – This move is not mentioned in Lees' *Guide*,



where 8-11 is the trunk, but it seems just as strong. **F** – 4-8! and 2-7 Red strong and may win.  
**D** – 29-25 18-22 25-18 3-8 seems to draw.  
**E** – 15-18! RW.

### #33, Joe Schwartz – Lubabalo Kondlo, round 8 g.1

11-15 23-19 8-11 22-17 3-8(**A**) 25-22 11-16 27-23 7-11 24-20 15-24 28-19 10-14 17-10 6-24 22-18 1-6  
 29-25(**B**) 6-10(**C**) 25-22 24-28 22-17 9-14 18-9 5-14 17-13(**D**) 11-15 20-11 15-18 31-27 8-15 13-9 12-16  
 21-17(**E**) 14-21 23-7 2-11 9-6 16-20 6-2 11-16 2-7 15-19 7-11 19-24 27-23 24-27 23-19 16-23 26-19 20-24  
 32-23 24-27 19-16 27-31 23-19 28-32 draw

**A** – Alma.  
**B** – 21-17 draw PP.  
**C** – 24-28 21-17 6-10 25-21 = same. Or 9-14 draw twice in the L. Levitt – D. Oldbury, 1976 GAYP WCM.  
**D** – Or 31-27 11-15 perhaps to same. Or 26-22 11-15 draw, K. Albrecht – L. Dibble, 1964 U.S. Nat.  
**E** – 9-5 draws.

### #34, Lubabalo Kondlo – Joe Schwartz, round 8 g.2

11-15 23-18 15-19(**A**) 24-15 10-19 27-24 7-10 24-15 10-19 21-17 12-16 18-15 8-12 22-18 19-23(**B**) 26-19  
 16-23 25-21(**C**) 4-8 28-24(**D**) 12-16 24-20 16-19 17-14 19-24 21-17 2-7 17-13 24-27! 31-24 23-27(**E**) 32-23  
 7-10 14-7 3-28 29-25?(**F**) 28-32 23-19?(**G**) 32-27 25-22 8-12 30-25(**H**) 27-23!(**I**) RW(**J**)

**A** – Montrose Cross.  
**B** – 3-7 draw PP.  
**C** – 25-22 draw PP.  
**D** – 17-14 should draw, D. Oldbury – R. Hallett, 1985 match g.4, from 12-16 23-18 16-19.  
**E** – 23-26 or 7-10 draw.  
**F** – Complicates the draw. 23-19 or 20-16 may be easy.  
**G** – 25-22! 8-12 (32-27 20-16 draw, but not 23-19?  
 back to the above game) 30-26\* (22-17? 32-27 17-14 27-24 RW) 32-27 (Nemesis suggests 12-16 20-11 32-27 11-8 6-10 13-6 10-14 draw) 20-16 draw.  
**H** – 22-17 also loses.  
**I** – The move we dismiss without thought.  
**J** – The scoresheet said “WW,” but the cross-table correctly showed the WW. Continue 18-15 23-16 20-11 9-14 RW. A great ending.

### #35, Clayton Nash – Anatoliy Raevskyy, round 9 g.1

11-15 22-18 15-22(**A**) 25-18 8-11 29-25 10-14(**B**) 25-22 7-10 24-20 12-16 27-24 4-8 24-19 8-12 28-24(**C**)  
 3-7 32-28?(**D**) 9-13 18-9 5-14 22-17(**E**) 13-22 26-17 14-18 23-14 16-23 24-19 1-5 17-13(**F**) 10-17 21-14  
 23-27 31-24 11-16 20-11 7-23 24-19 23-26 30-23 6-9 RW

**A** – Single Corner.  
**B** – 4-8 draw PP.  
**C** – 32-27 9-13 draw, J. Sturges, as well as a couple of games by C. Nash, but not 10-15? WW PP.  
**D** – Another popular loss. 30-25 draw, F. Brown – W. Campbell, 1898 Scottish Ty., and C. Nash – J. Ferrell, 2003 GAYP Nat.  
**E** – 22-18 (21-17 14-21 22-18 also loses) is popular, and is given as a draw in W. Fraser’s *Inferno of Checkers*. Continue 13-17! RW, W. Hill – J. Sheffield, 1922 ACA Nat.  
**F** – 30-25 RW, J. Coll – D. Hyde, 1975 English Open.

### #36, Anatoliy Raevskyy – Clayton Nash, round 9 g.2

11-15 23-19 8-11 22-17 10-14?(**A**) 19-10 6-15(**B**) 17-10 7-14 24-19?(**C**) 15-24 28-19 4-8(**D**) 25-22 11-16?(**E**)  
 19-15 16-19(**F**) 22-17 14-18 17-13 12-16(**G**) 13-6 1-10 15-6 2-9 27-23 18-27 31-15 WW

**A** – A published loss.  
**B** – = 10-14 23-19 11-15 19-10 6-15 22-17 8-11?  
**C** – 25-22 WW, with much published play, some of it faulty. For example, continue 4-8 (14-18 29-25!

WW) 22-17 (24-19? drew, K. Breen – P. Breen, 1995 Women's WCM) 14-18 17-13 1-6 26-23? (29-25! 2-7 24-19 15-24 28-19 7-10 26-22 WW?) 9-14? (12-16 24-20 8-12 30-26 3-7 easy draw) is a published WW by J. Wyllie.

**D** – Or 1-6 may draw.  
**E** – 2-6 or 3-7 may draw.  
**F** – 14-18 WW?  
**G** – Others lose.

### #37, Joe Schwartz – Shane McCosker, round 9 g.1

11-15 23-19 8-11 22-17 3-8(**A**) 25-22 11-16 27-23 7-11 24-20 15-24 28-19 10-14 17-10 6-24 22-18 1-6 29-25(**B**) 6-10(**C**) 32-28?(**D**) 24-27?(**E**) 31-24 10-15 26-22 15-19 24-15 9-14 18-9 11-27 20-11 8-15 22-17 5-14 17-10 27-31 21-17 31-27 17-13 27-23 25-22 draw

**A** – Alma.  
**B** – 21-17 draw PP.  
**C** – 24-28 draw, Lees' *Guide*.

**D** – 25-22 draw.  
**E** – 16-19!! RW.

### #38, Michael Holmes – Ron King, round 9 g.1

11-15 22-18 15-22(**A**) 26-17?(**B**) 9-14 25-22 8-11 29-25(**C**) 11-15 23-19 5-9 17-13 7-11 22-17(**D**) 3-8?(**E**) 27-23 11-16 24-20 15-24 28-19 1-5 20-11 8-24 25-22 4-8(**F**) 22-18 12-16(**G**) WW(**H**)

**A** – Single Corner.  
**B** – Weak.  
**C** – King moved 24-20, against C. Nash, in the previous round.  
**D** – = 11-15 23-19 9-14 22-17 7-11 (Whilter) 25-22 5-9 17-13 11-16 22-17 16-23 26-19 8-11 29-25.  
**E** – 14-18 draw in McCulloch's *Anderson*, p.106

v.2.  
**F** – 14-18 WW, R. Hallett – R. King, 1998 match g.16 from 9-14 22-17 11-15.  
**G** – 8-11 WW, A. Anderson.  
**H** – C. Reno's *Work of the Pentium*, p.65 v.10, continues the WW from here.

### #39, Rich Beckwith – Gene Lindsay, round 9 g.2

11-15 22-17 8-11 17-14(**A**) 10-17 21-14 9-18 23-14 12-16 26-23(**B**) 16-19 23-16 11-20 24-19 15-24 28-19 4-8(**C**) 25-22(**D**) 6-10 30-26 10-17 22-13 8-11 29-25(**E**) 7-10 19-16 11-15 16-11 10-14 25-21(**F**) 1-6(**G**) 26-23 15-18 23-19(**H**) 18-22 19-16 22-25 16-12 25-29 11-8 29-25 8-4 25-22 4-8 2-7 8-4(**I**) 14-17 21-14 22-17 27-23 17-10 23-19 5-9(**J**) 4-8 9-14 31-27?(**K**) 14-17?(**L**) 19-16 10-15 27-23 20-24 32-28 7-10 28-19 15-24 23-18 17-21 16-11 10-15 18-14 15-18 14-9 6-10 11-7 draw

**A** – White Dyke.  
**B** – 25-22 draw PP.  
**C** – 6-9 draw PP.  
**D** – 27-23 draw, R. King – R. Beckwith, 2005 GAYP Nat.  
**E** – 26-23 draw, A. Jordan – J. Howe, 1920 ACA Nat.  
**F** – 27-23 may be safer.

**G** – 15-18 may be stronger.  
**H** – Or 31-26 draw.  
**I** – 27-24 20-27 32-23\* draw.  
**J** – Or 7-11 4-8 11-15 19-16 15-18 32-27 18-22 8-11 22-25 11-7 may draw.  
**K** – 19-16 10-15 31-27 14-17 = same.  
**L** – 6-9! 13-6 10-1 19-16 1-6\* 8-11 6-2\* RW, verified by Chinook.

### #40, Lubabalo Kondlo – Paul Bryan, round 9 g.1

11-15 24-20 8-11(**A**) 28-24 4-8 22-18(**B**) 15-22 25-18 9-14(**C**) 18-9 5-14 29-25 11-15 23-19 8-11 27-23 15-18(**D**) 31-27 1-5 26-22 3-8 22-15 11-18 30-26 7-11(**E**) 32-28 5-9(**F**) 19-15 10-19 24-15 9-13 28-24 2-7?(**G**) 15-10 6-15 23-19 18-23(**H**) 27-9 15-18 26-22 18-23 9-6 23-26 6-2 7-10 22-18 26-30 2-7 10-15 19-10 13-17 21-14 30-21 draw(**I**)

**A** – Ayrshire Lassie.

**B** – 23-19 draw PP.

C – 10-15 draw PP.

D – 6-9 may be interesting, M. Hammar – S. Weslow, 1929 Cedar Point Nat.

E – 8-11 draw.

F – 11-15 draw.

G – 13-17 draw.

H – 7-10 26-22 WW.

I – The position is a WW. Scoresheet: “White made an endgame blunder 4K vs 3 and went into a 2 for 1 to allow a draw.”

#### #41, Paul Bryan – Lubabalo Kondlo, round 9 g.2

9-14 22-17 11-15 25-22 15-19(A) 24-15 10-19 23-16 12-19 17-10 6-15 21-17 5-9 27-24(B) 2-6 22-18 15-22 24-15 9-13 32-27 7-11 26-23 11-18 23-14 1-5 27-23(C) 3-7?(D) 30-25 8-11 25-18 13-22 28-24 11-16 14-10 6-15 18-2 WW

A – Double Corner Dyke.

B – 17-13 draw PP.

C – 14-10 draw, A. Jordan – N. Banks, 1917 WCM

g.33.

D – 8-11 draw.

#### #42, Jack Francis – Richard Hallett, round 10 g.2

11-15 22-17 15-19(A) 24-15 10-19 23-16 12-19 25-22 8-11 27-23(B) 4-8 23-16 11-20 22-18 9-14(C) 18-9 6-22 26-17 8-11 29-25 5-9(D) 25-22 11-15 30-26 7-10 32-27(E) 9-14 26-23 3-7 23-19 15-24 28-19 7-11 27-24?(F) 20-27 31-24 draw?(G)

A – Dyke.

B – 30-25 draw PP.

C – 8-11 draw PP.

D – 11-15 draw PP.

E – = 11-16 22-17 16-19 23-16 12-19 24-15 10-19 25-22 8-11 27-23 4-8 23-16 11-20 22-18 8-11 32-27 9-14 18-9 6-22 26-17 5-9 29-25 7-10 25-22 11-15

30-26. = 9-14 22-17 5-9 17-13 1-5 25-22 14-17 21-14 9-25 29-22 10-15 23-18 11-16 18-11 8-15 24-19 15-24 27-11 7-16 28-24 4-8 26-23 8-11 22-18 3-7 C.R. Or 17-13 draw PP.

F – 17-13 draw PP.

G – The final position is a RW. Continue 1-6 17-13 6-9\* RW.

#### #43, Michael Holmes – Anatoliy Raevskyy, round 10 g.1

11-15 22-18 15-22(A) 25-18 8-11 29-25 4-8 25-22(B) 12-16 24-20 10-15 30-25?(C) 8-12 21-17?(D) 9-13 25-21 16-19?(E) 23-16 12-19 27-23 6-10 23-16 15-19 17-14(F) 10-17 21-14 1-6 22-17(G) 13-22 26-17 6-10 18-15 11-18 16-11 7-16 20-11 10-15 14-10 19-23 17-13 23-26 31-22 18-25 10-6 2-9 13-6 25-30 draw

A – Single Corner.

B – 24-20 draw PP.

C – 21-17 draw PP.

D – 27-24 may draw?

E – 6-9 RW.

F – 18-14! White strong.

G – 28-24 15-28 26-23 11-15 18-11 6-10 draw.

#### #44, Alan Millhone – Anthony Bishop, round 10 g.1

11-15 24-20 15-19(A) 23-16 12-19 22-18 9-14(B) 18-9 5-14 25-22 10-15 22-17 7-10(C) 20-16 8-12?(D) 27-24?(E) 15-18(F) 24-15 12-19(G) 29-25(H) 4-8 17-13 18-23?(I) 31-27?(J) 6-9?(K) 13-6 2-9 15-6 1-10 27-18 14-23 25-22 8-11 22-17 9-13 17-14 10-17 21-14 13-17 14-9 17-21 28-24 19-28 26-19 3-8 9-6 8-12 6-2 WW

A – = 11-16 24-20 16-19, Bristol.

B – Scoresheet: “10-14.” 10-14 is the second most popular move here, behind 9-14.

C – 6-10 draw.

D – A published loss in Kear’s Encyclopedia

(Wyllie – Martins in the next note). 2-7 draw PP.

E – For 16-11!, see game below:

11-16 24-20 16-19 23-16 12-19 22-18 9-14 18-9 5-14 25-22 10-15 (Kear’s *Encyclopedia* gives the beginning of this game as 10-15 24-20 15-19 23-16

12-19 22-18 9-14 18-9 5-14 25-22 11-15 = same)  
 22-17 7-10 20-16 8-12 16-11! (varies from the  
 above game) 12-16(**E1**) 29-25 3-8 17-13 1-5 25-22  
 14-18 22-17 18-22 17-14 10-17 21-14 8-12 26-17  
 19-23 27-18 15-22 28-24 6-9 13-6 2-18 17-13 18-23  
 24-19 16-20 11-7 4-8 7-2 (in Kear's, the game ends  
 7-3 20-24 3-7 WW) 20-24 2-7 WW, J. Wyllie – R.  
 Martins, 1864 WCM g.5

**E1** – Nemesis suggests 3-8 and/or 1-5 as  
 alternatives: 3-8 (3-7? 27-24 WW) 17-13 (27-24  
 12-16 29-25 W. strong) 1-5 or 12-16, White is  
 strong and may transpose back into this game or  
 another WW.

**F** – This may be best. B. Martin suggested 2-7 as a  
 possible draw.

**G** – 10-19 WW, J. Smith – W. Beattie, 1882 match  
 g.10.

**H** – Scoresheet: “15-11?” which may lose to 3-8.  
 Instead 32-27 has been played a couple of times,  
 including B. Kilgour – L. Levitt, 1995 IM, and is  
 probably a draw.

**I** – Others draw.

**J** – 13-6!! 9-13 15-6 2-9 25-22 regains the piece  
 with a WW.

**K** – 14-18 draws.

#### #45, Rich Beckwith – Lobabalo Kondlo, round 10 g.1

11-15 23-19 8-11 22-17 11-16(**A**) 24-20 15-24 20-11 7-16 27-11 3-7 25-22(**B**) 7-16 22-18 9-14 18-9 6-22(**C**)  
 26-17 5-9 29-25(**D**) 4-8 25-22(**E**) 1-6 28-24 8-11 17-13 2-7 22-18 10-15 30-26 15-22 26-17 11-15 24-20  
 16-19 20-16?(**F**) 19-24 32-27 12-19 27-20 7-11(**G**) 17-14 9-18 21-17 18-23 17-14 15-18 14-9 6-10 9-6 10-14  
 6-2 11-15 2-7 23-26 31-22 18-25 7-10 14-18 13-9 18-22 9-6 15-18 10-15 19-24 6-2 WW(**H**)

**A** – Glasgow.

**B** – 28-24 draw.

**C** – 5-14 is also popular.

**D** – 28-24 draw PP.

**E** – 28-24 or 30-26 have been played.

**F** – 32-27 19-24 27-23 24-28 31-26 draw.

**G** – RW, Chinook.

**H** – The position is a RW. Scoresheet: “WW on  
 blunder.”

#### #46, Lobabalo Kondlo – Rich Beckwith, round 10 g.2

11-15 22-17 8-11 23-19 9-14 25-22 11-16(**A**) 24-20 16-23 27-11 7-16 20-11 3-8?(**B**) 11-7 2-11 32-27(**C**)  
 11-15 27-24 8-11(**D**) 24-20 15-19(**E**) 22-18!(**F**) 14-23 17-14 10-17 21-14 4-8 29-25 23-27 31-15 11-18 25-21  
 8-11 28-24 5-9?(**G**) 14-5 6-10 21-17 10-15 17-14 12-16 14-10 16-19 10-7 19-28(**H**) 7-3 15-19 3-7 11-15 7-11  
 19-24 11-16\* 1-6 5-1 6-10 1-6 24-27 16-11 28-32 WW(**I**)

**A** – Glasgow.

**B** – 3-7 draw PP.

**C** – 28-24 is the move in Lees' *Guide*, while 26-23  
 is the move in Kear's *Encyclopedia*.

**D** – 12-16 should draw, J. Francis – C. Reno, 2005  
 GAYP Nat.

**E** – 4-8, planning 15-18, may be safer.

**F** – Very strong.

**G** – 12-16 draw.

**H** – WW, Chinook.

**I** – Every White move wins.

#### #47, Jack Francis – John Webster, round 11 g.2

10-15(**A**) 22-17 11-16 23-18 15-22 25-18 8-11(**B**) 17-13 16-20 24-19(**C**) 11-16(**D**) 26-23 7-10 28-24 4-8  
 29-25 9-14 18-9 5-14 25-22 3-7 22-18(**E**) 14-17(**F**) 21-14 10-17 30-25(**G**) 7-10 25-21 2-7(**H**) 21-14 10-17  
 18-14 6-10 13-9?(**I**) 17-22 9-6 10-17 6-2 7-11 19-15 11-18 23-14 17-21 24-19 16-23 27-18 RW

**A** – Kelso.

**B** – 9-14 draw PP.

**C** – 29-25 draw PP.

**D** – 11-15 draw, R. King – F. Buckby, 2001 English  
 Open.

**E** – Or 30-25 first.

**F** – 1-5 seems to draw.

**G** – 31-26 may be easier.

**H** – 17-22 seems to draw.

**I** – 14-9! 10-14 19-15!! 16-19 23-16 12-28 15-10

7-11 9-6 11-15 6-2 17-22 2-7 15-18 7-2 22-25 2-6  
18-22 6-9 14-17 9-14 17-21 14-17 draw.

**#48, Gene Lindsay – Joe Schwartz, round 12 g.1**

11-15 23-18 10-14 18-11 8-15 26-23 6-10 22-17 4-8 23-19 8-11 17-13 2-6(A) 25-22(B) 14-17 21-14 10-26  
31-22?(C) 7-10 27-23 9-14 30-26 14-17 24-20 15-24 28-19 11-15 32-28 15-24 28-19 10-15 19-10 6-15 20-16  
12-19 23-16 1-6 16-11 15-19 RW(D)

A – 1-6 draw PP.

B – 31-26 draw PP.

C – The loser. 19-10 draw PP.

D – Continue 22-18 3-7 RW, a fine refutation.

**#49, Lubabalo Kondlo – Rich Beckwith, round 13 g.2**

11-15 22-17 8-11 23-19 4-8(A) 17-13 15-18 24-20 9-14 28-24 11-15 26-23 8-11 31-26 5-9(B) 21-17 14-21  
23-5 15-18 26-23 18-22 25-18 10-15 19-10 6-22 23-18 7-10 24-19 3-7 27-23 11-16 20-11 7-16 32-28 2-6  
18-15 22-26 13-9(C) 6-13 15-6 1-10 23-18 16-23 5-1 26-31 1-6 31-27 6-15(D) 13-17 15-10 17-22 10-14  
12-16 14-9 16-19 18-14 27-24 14-10\* 24-20 10-6?(E) 20-16\* 6-2 23-26\* 30-23 19-26(F) 28-24 26-31?(G)  
9-14?(H) 21-25?(I) 14-10?(J) 31-27\* 24-20 16-12 2-7 25-30 10-15 27-24\* 7-10 22-26\* 10-14 26-31\* 14-10  
31-26 10-7 26-22 7-10 30-26 10-7 26-23 7-2 23-19 15-10 12-8 10-14 8-11 14-10 24-27 10-14 27-23 14-10  
23-18 2-6 22-17 6-9 18-22 9-6 17-13 10-14 19-23 6-1 22-18 14-10 18-14 10-17 13-22 1-6 22-17 6-10 17-13  
10-6 23-19 6-1 13-9 1-5 9-14 5-1 19-15 RW(K)

A – Old 14th.

B – 6-9 draw PP.

C – 28-24 26-31 (16-20? 15-11 20-27 19-15 WW)  
24-20 31-27 20-11 27-18 30-26 18-23 11-7 23-16  
15-11 draw.

D – Draw, Chinook. The following asterisks were  
provided by Chinook.

E – Good defense by White, to here. 9-14\* 22-26  
29-25 26-31 25-22 draw.

F – The following asterisks were provided by

Nemesis.

G – 16-11\* RW.

H – 2-7\* draw.

I – 16-11 RW.

J – 24-20\* draw.

K – I haven't exhaustively analyzed this ending,  
but you can see some of the beauty and some of the  
difficulty.

**#50, Jim Morrison – John Webster, round 13 g.2**

9-14 22-17 11-16 25-22(A) 8-11 22-18 16-20 18-9 5-14 29-25 11-15 25-22 7-11 17-13 4-8 22-17 15-18 24-19  
11-15?(B) 30-25 15-24 28-19 2-7 26-22 7-11(C) 22-15 11-18 31-26 12-16(D) 19-12 8-11 32-28 1-5 28-24  
5-9 26-22 11-16 22-15 10-26 17-1 9-14 WW

A – To the Pioneer.

B – A published loss. 18-22 draw PP.

C – 12-16 19-12 7-11 22-15 10-26 31-22 11-16  
17-10 6-15 27-24 WW, T. Laverty – G. Lindsay,

1996 U.S. Nat. from 11-16 21-17 9-14.

D – 10-15 WW, J. Francis – J. Webster, 1998 U.S.  
Nat.

In the final round, eight games were not turned in.

---

---

---

## 2007 “Arthur Niederhoffer” National Youth Tournament

a few selected games

### #1, Kevin Burks – Shane McCosker, Youth Ty., round 1 g.1

10-15 21-17 9-13(A) 17-14 15-18(B) 22-15 11-18 26-22(C) 7-11(D) 22-15 11-18 24-19(E) 8-11 28-24 2-7(F) 19-15 4-8 24-20 13-17 23-19 17-21(G) 31-26 6-9 26-22 9-13 32-28(H) 18-23?(I) 27-18 1-6 15-10 6-24 28-19 13-17 22-13 7-10 14-7 3-10 18-14 10-17 19-16 12-19 25-22 17-26 30-7 8-11 7-3 11-15 3-7 15-18 7-10 WW(J)

A – Tyne, pretty darned difficult for GAYP.

B – Frazier Defense, probably more difficult than 11-16.

C – Or 24-19 is also strong.

D – This may draw. 12-16 22-15 7-10 is the difficult draw in *Basic Checkers*.

E – Or 14-10 draw PP.

F – 6-9 White strong, E. Barry – V. Dowsey, 1984

I-D.

G – 6-9 may be better.

H – 15-10! 5-9 White strong and may actually win, but not 11-15? 27-24 WW!

I – 13-17! 22-13 1-6 draw, as White has to give the piece back. Continue 14-10 7-14 28-24 14-17 20-16 11-20 15-11 8-15 19-1 draw.

J – A strong game by White.

### #2, Shane McCosker – Kevin Burks, Youth Ty., round 1 g.2

11-15 23-18 9-14(A) 18-9 5-14 22-17 8-11 25-22 4-8 29-25 12-16 24-19 16-23 27-9 6-13 17-14 10-17 21-14 11-16 32-27(B) 8-12 25-21 16-19(C) 27-24 7-10(D) 14-7 3-10 22-17(E) 13-22 26-17 19-23 17-14(F) 10-17 21-14 23-27 24-20 27-32 14-10 15-18 30-25 1-5 31-26 32-27(G) 26-23 27-31(H) 23-14(I) 31-26 28-24 26-31 25-22 31-26 22-17 26-22 17-13 22-17 24-19 17-22 19-15 22-17 15-11 12-16 11-8 16-19 8-3 19-23 3-8 23-26 20-16 26-30 16-11 30-26 11-7 2-11 8-15 26-22 15-11 22-26 11-15 26-22 15-19 22-26 13-9 26-22 19-15 17-13\* 10-6 13-17 15-10 17-13 10-7 13-17 7-10 draw

A – Cross Choice.

B – 25-21 draw PP, perhaps to same.

C – 15-19 is the trunk draw in *Basic Checkers*.

D – 12-16 draw PP.

E – 26-23 draw, L. Taylor – E. Frazier, 1962 U.S. Nat.

F – 24-20 also draws.

G – 5-9 also draws.

H – This works nicely, but 27-24! may be an easier draw.

I – Draw confirmed by Chinook.

### #3, Shane McCosker – Ryan Pronk, Youth Ty., round 3 g.1

11-15 23-18 8-11(A) 18-14 9-18 24-19 15-24 22-8 4-11 27-20 11-15 28-24 5-9 21-17 9-14 25-21 7-11 29-25 3-8 17-13(B) 14-18 26-22(C) 15-19 24-15 10-19 22-15 11-18 21-17 8-11 31-26?(D) 19-24 32-28(E) 24-27 26-23 27-31?(F) 23-14 31-27 25-22 12-16(G) 14-10?(H) 6-15 17-14 2-7 30-25 16-19 25-21 27-23 22-17 15-18 13-9(I) 18-22 9-5 22-26 14-9 19-24 28-19 23-16 9-6 1-10 5-1 16-12 1-5 12-8 5-9 8-3 9-13 26-31 RW

A – Cross.

B – 26-23 6-9 25-22 draw, S. McCosker – R. Pronk in round 6.

C – 21-17 may be safer.

D – 17-14 may draw.

E – Others lose.

F – 27-32!! 23-14 12-16 and 16-19 RW.

G – 11-15 is also strong.

H – 28-24!! 27-32 22-18! 32-28 18-15! draw.

I – 14-10 7-14 21-14 11-16 RW, now or later.

### #4, Ryan Pronk – Paul Bryan, Youth Ty., round 4 g.1

11-15 24-20 10-14(A) 22-17 6-10(B) 17-13 1-6 25-22?(C) 14-18 23-14 9-25 29-22 8-11!!(D) 27-23(E) 15-19(F) 23-16 12-19 22-18(G) 4-8 31-27(H) 8-12 27-24(I) 19-23 26-19 11-15 18-11 7-23 24-19 3-7 20-16 10-14 RW

**A** – = 10-14 24-20 11-15, from the two-move era.  
**B** – = 10-14 24-20 6-10 24-20 11-15.  
**C** – This popular move seems to lose. 28-24 draw PP.  
**D** – This move has been around since 1905, and probably wins (as I planned to report in my BC corrections) while the more popular 15-19 may only draw.  
**E** – 26-23 RW PP or 28-24 RW, H. Reynolds – H.

Morrall, 1905 IM.  
**F** – 4-8? draws PP.  
**G** – 32-27 should have lost, J. Ferrie – H. Reynolds, 1905 IM.  
**H** – 21-17 should have lost, V. Monteiro – D. Brattin, 1978 Lakeside. 26-22 also seems to lose.  
**I** – 21-17 RW, G. Crookston – J. Corbett, 1902 Scottish Ty.

#### #5, Kevin Burks – Paul Bryan, Youth Ty., round 6 g.1

11-15 24-20 8-11(**A**) 28-24 4-8 22-18(**B**) 15-22 25-18 9-14(**C**) 18-9 5-14 29-25 11-15 23-19(**D**) 8-11 27-23 6-9 25-22 9-13 32-28 11-16?(**E**) 20-11 7-16 24-20 15-24 28-19 3-7 20-11 7-16 22-18 1-5 18-9 5-14 26-22 2-7 22-18 14-17 21-14 10-17 19-15 16-19 23-16 12-19 18-14 19-24 14-9 24-28 9-5 28-32 5-1 32-28 1-6 28-24 6-9\* 24-19 15-10 7-14 9-18 19-24 18-14 17-21 14-18\* 13-17 draw?(**F**)

**A** – Ayrshire Lassie.  
**B** – 23-19 draw PP.  
**C** – Or 10-15 draw PP.  
**D** – 32-28 draw, W. K. Campbell – M. Barrie, 1896 Scottish Ty.  
**E** – 1-6 draw, Robertson's *Guide*, p.39 v.309 or 1-5

draw, M. Hammar – S. Weslow, 1929 Cedar Point Nat.  
**F** – Great play by White to here. Other players have drawn this ending. Here, T. Lavery suggested: 31-26 24-27 18-14 27-31 14-9 31-22 9-13 WW, which is PP.

#### #6, Paul Bryan – Kevin Burks, Youth Ty., round 7 g.1

10-14 22-18 11-15 18-11 8-15 24-19 15-24 28-19 4-8(**A**) 25-22 8-11 22-18(**B**) 6-10(**C**) 29-25(**D**) 9-13 18-9 5-14 25-22(**E**) 11-15(**F**) 19-16 12-19 23-16 14-18 30-25 10-14 27-24(**G**) 1-6(**H**) 32-28(**I**) 14-17 21-14 7-10 14-7 2-27 31-24 RW?(**J**)

**A** – 6-10 draw PP.  
**B** – = 9-13 23-19 11-15 22-17 13-22 25-11 8-15 29-25 5-9 25-22 9-14 C.R.  
**C** – = 11-15 23-19 9-14 27-23 8-11 22-18 15-22 25-9 5-14 29-25 11-15 25-22 Defiance C.R.  
**D** – Or 26-22 draw PP.  
**E** – Or 23-18 draw PP.

**F** – Or 11-16 draw PP.  
**G** – Or 32-28 draw PP.  
**H** – 14-17 21-14 7-11 draw PP.  
**I** – 32-27 also draws.  
**J** – The position is a draw: continue 6-9 24-20\* 9-14 28-24\* 14-17 25-21 draw.

## 2007 WCDF – GAYP World Qualifying Tournament

Plaza Hotel and Casino in Las Vegas, NV, September 17th – 21st , 2007

|    |                     |       |                              |      |    |       |
|----|---------------------|-------|------------------------------|------|----|-------|
| 1  | Lubabalo Kondlo     | WCDF  | Port Elizabeth, South Africa | 2410 | 20 |       |
| 2  | IM Richard Beckwith | ICHF  | Willoughby OH                | 2397 | 19 | S – B |
| 3  | GM Jack Francis     | BDA   | St. James, Barbados          | 2416 | 18 | 257   |
| 4  | GM Jim Morrison     | WCDF  | Glasgow KY                   | 2470 | 18 | 252   |
| 5  | CM Tim Lavery       | extra | Sanford NC                   | 2383 | 17 | 293   |
| 6  | IM Clayton Nash     | ACF   | Aberdeen MS                  | 2326 | 17 | 255   |
| 7  | GM Ed Bruch         | ACF   | East Amherst NY              | 2524 | 16 | 233   |
| 8  | IM Michael Holmes   | ACF   | Fort Knox KY                 | 2320 | 16 | 229   |
| 9  | IM Joe Schwartz     | ICHF  | Hallandale FL                | 2309 | 16 | 166   |
| 10 | Sune Thrane         | DEN   | Denmark                      | 1797 | 3  |       |

S – B (Sonnenborn – Berger) tiebreak for a player is the scores of every opponent he/she defeated plus half the scores of every opponent he/she drew. In this tournament, the tiebreak was evidently twice that, to avoid fractions. This method is widely used in round robins where other methods fail to break any ties, because everyone who is tied has played opponents with the same scores. This tournament was not a round robin. Personally, I consider S-B tiebreak to be little different from flipping a coin.

### Clayton Nash – Ed Bruch, round 1 game 1

11-15 22-18(**A**) 15-22 25-18 8-11 29-25 10-14(**B**) 25-22 12-16(**C**) 24-20 7-10 27-24 4-8 24-19(**D**) 8-12 32-27(**E**) 9-13 18-9 5-14 22-18 1-5 18-9 5-14 26-22(**F**) 13-17 22-13 14-18 23-7 16-32 21-17(**G**) 3-10 30-26!!(**H**) draw(**I**)

**A** – Single Corner.

**B** – Fairly rare and not mentioned in Duffy's Single Corner.

**C** – Or 7-10 first.

**D** – 18-15 was a long draw, J. Way – H. Coltherd, 1858 match g.28.

**E** – 28-24 draw, F. Brown – W. Campbell, 1898 Scottish Ty.

**F** – Or 19-15 should draw, J. Sturges, g.2 v.6 and several games since, including M. Holmes – C. Nash, 2003 Internet match.

**G** – Or 30-26 first.

**H** – For 30-25?, see C. Nash – S. Thrane in round 6.

**I** – From this position, it may not be obvious that White can survive. Continue 11-15 26-23 (draw, R.

Martins – J. McKerrow, 1858 match g.9) 2-7(**II**) 31-27 15-19 (W. Fraser) 23-16 12-19 27-24 19-23 (32-27 also draws, C. Nash – E. Bruch, 2003 GAYP Nat.) 20-16 32-27 (23-26 to same) 24-20 23-26 16-12 26-30 (27-23 to same) 12-8 27-23 8-3 23-18 28-24! (W. Fraser showed 20-16? to lose in the classic International Draughts and Checkers, p.119) 30-25 24-19 25-21 (25-22 draw, D. Oldbury – L. Levitt, 1976 match g.22) 17-14 18-9 19-15 10-19 (draw, A. Moiseyev – E. Bruch, 2001 GAYP Nat.) 3-1 draws, T. Wiswell – W. Fraser, 1956 match g.10.

**II** – 15-19 23-16 12-19 20-16 10-15 16-11 6-10 13-9 19-24 28-19 15-24 17-13 32-27 draw, T. Hudson – J. Drummond, 1858 match.

### Jack Francis – Sune Thrane, round 1 game 1

11-15 22-18(**A**) 15-22 25-18 12-16 18-14 9-18 23-14 10-17 21-14 8-11(**B**) 29-25 4-8 26-22(**C**) 6-10 31-26 10-17 22-13 11-15 24-20?(**D**) 16-19 27-23 8-12 23-16 12-19 20-16 7-10 16-11(**E**) 19-24 28-19 15-24 25-22 1-6 22-18 10-15?(**F**) 26-22 15-19 30-26?(**G**) 2-7 11-2 3-8 2-9 5-30 22-18 30-26 18-15 26-22 15-10 22-18 10-7 18-14 7-3 8-12 3-8 24-28 8-11 19-23 11-15 23-26 15-19 26-31 19-23 12-16 RW

**A** – Single Corner.

**B** – 6-10 draw PP.

**C** – 24-19 draw PP.

**D** – This may lose, allowing Red a very strong dyke formation. 27-23 draws.

**E** – 32-27 may also lose?



**F** – 5-9! RW.

draw) 17-14 and 14-9 draw.

**G** – 22-17 19-23 (6-10 30-26 may be the easiest

### **Sune Thrane – Jack Francis, round 1 game 2**

11-15 24-20(**A**) 8-11 22-17(**B**) 9-14(**C**) 25-22(**D**) 15-19(**E**) 23-16 12-19 27-23 4-8 23-16 8-12 32-27 12-19 27-23 3-8 23-16 8-12 31-27 12-19 27-23 11-16 20-11 7-16 17-13 10-15(**F**) 21-17 14-21 23-18 6-10(**G**) 18-11 10-15 11-8 5-9 13-6 1-10 8-3 16-20 3-8 19-24 28-19 15-24 8-11 24-27 26-23 27-31 23-19 20-24 19-16 24-28 16-12 28-32 12-8 32-27 8-3 27-23 3-8 10-14?(**H**) 22-17 14-18 11-7 2-11 8-22 31-27 22-18 23-14 17-10 27-23 10-6 23-18 30-26 18-14 6-1 14-9 1-5 9-6 26-23 6-1 5-9 1-5 9-14 5-1 23-18 1-6 18-15 6-1 15-10 1-5 10-6 5-1 14-10 1-5 6-1 5-9 1-5 9-13 10-15 13-17 15-18 17-13 18-23 13-17 23-18 17-13 29-25 21-30 18-22 WW

**A** – Ayrshire Lassie.

**B** – 28-24 draw PP.

**C** – 4-8 draw PP.

**D** – 17-13 ended in a RW, C. Reno – J. Francis, 1995 GAYP Nat.

**E** – = 11-16 21-17 9-14 25-21 (= 9-14 22-17 11-16 25-22) 8-11 24-20 16-19; 4-8 should draw?, A.

Scott – F. Dunne, 1910 Scotland vs. England.

**F** – 5-9 draw, D. Oldbury – W. Fraser, 1964 match g.3.

**G** – 16-20 18-11 20-24? (6-10 draw as in the above game) WW, L. Balderson – J. Francis, in both 1999 GAYP Nat. and 2001 GAYP Nat.

**H** – 2-6 draws.

### **Lubabalo Kondlo – Jim Morrison, round 1 game 1**

11-15 23-18(**A**) 8-11 27-23 10-14(**B**) 23-19 14-23 19-10 7-14 26-19 6-10(**C**) 32-27 11-15 27-23 4-8 22-18 15-22 25-18 8-11(**D**) 29-25(**E**) 11-16(**F**) 25-22 16-20 18-15 20-27 15-6 1-10 31-24 9-13 22-18 3-7 18-9 5-14 24-20(**G**) 7-11 30-26 13-17 19-16 12-19 23-7 2-11 28-24 10-15 26-23 15-18 23-19 18-23 19-16 11-15 16-11 23-27 11-7 27-32 20-16 32-28 24-20 17-22 7-2 14-18 draw

**A** – Cross.

**B** – 4-8 draw PP.

**C** – 11-16 draw PP.

**D** – 9-13 draw, D. Lafferty – J. Morrison, 1986 match g.3. See the next to last note of the next game.

**E** – 24-20 draw, N. Banks – A. Jordan, 1915 ACA Nat. and a couple of R. King – J. Morrison games.

**F** – 9-13 draw, N. Banks – A. Jordan, 1917 WCM g.39 and three R. King – J. Morrison games.

**G** – 30-26 draw C.R., J. Schwartz – C. Olsen, 2004 U.S. Nat. from 9-13 24-19 11-15.

### **Jim Morrison – Lubabalo Kondlo, round 1 game 2**

11-15 23-19 9-13(**A**) 22-18 15-22 25-18 10-14 18-9 5-14 29-25(**B**) 8-11 25-22 6-10 27-23 11-15 24-20 15-24 28-19 4-8 22-18 1-5 18-9 5-14 26-22 14-17 21-14 10-26 31-22 8-11 32-27(**C**) 7-10 30-25(**D**) 3-7 27-24(**E**) 10-14 22-18(**F**) 14-17 25-21 17-22 19-15 11-16 20-11 7-16 24-20 16-19 23-16 12-19(**G**) 21-17(**H**) draw

**A** – Will o' the Wisp.

**B** – 27-23 draw PP.

**C** – 30-25 draw PP.

**D** – 23-18 draw, W. Hellman – D. Oldbury, 1965 WCM g.29.

**E** – = the Lafferty – Morrison game in note G.

**F** – 25-21? 13-17! 22-13 2-6 RW, E. Bruch – W. Milhado, 1974 U.S. Nat.

**G** – The following game intersected with both of the above games:

11-15 23-18 8-11 27-23 10-14 23-19 14-23

19-10 7-14 26-19 6-10 32-27 11-15 27-23 4-8 22-18 15-22 25-18 9-13 (varies from the previous game) 18-9 5-14 29-25 3-7 24-20 8-11 25-22 14-17 21-14 10-26 31-22 1-6 28-24 6-10 30-25 (converges upon the above game) 10-14 22-18 14-17 25-21 17-22 19-15 11-16 20-11 7-16 24-20 16-19 23-16 12-19 draw, D. Lafferty – J. Morrison, 1986 match g.3

**H** – 15-10 draw, H. Henderson – N. Banks, 1910 match from 10-15 23-19 6-10.

### Tim Lavery – Michael Holmes, round 1 game 1

12-16(A) 24-20 11-15(B) 20-11 7-16 22-18 15-22 25-18 8-11 29-25(C) 4-8 25-22 10-15(D) 21-17 8-12(E) 17-13(F) 16-20(G) 23-19(H) 15-24 28-19 9-14 18-9 5-14 26-23(I) 14-17 31-26(J) 2-7(K) 23-18(L) 17-21(M) 22-17(N) 7-10 17-14 10-17 18-14 11-15 19-10 6-15 14-10 15-19 27-23 12-16 13-9(O) 1-5 9-6 5-9 6-2 9-13 2-6 3-8 10-7 17-22 26-17 19-26 30-23 13-22 6-10 8-12 10-15 21-25 7-3 25-30 3-7 22-26 7-10 26-31 10-7 30-26 15-19 31-27 RW

A – Relatively weak.

B – = 11-15 24-20 12-16 in the three-move deck.

C – Ed Bruch played 28-24 against Lavery in the 6th round.

D – “Weak,” Basic Checkers. 8-12 draw PP.

E – Maybe best, but not mentioned in BC. 16-20? 17-14 9-13 28-24 6-10 14-7 3-10 23-19 5-9 19-16 1-5 “draw,” W. Hellman shown in BC, but that seems to be a WW.

F – 28-24 draw PP.

G – 3-7 draw, W. Ryan – G. Garwood, 1929 Cedar Point Nat.

H – 30-25 draw, T. Lavery – D. Lafferty, 1993 GAYP Nat.

I – = 10-15 21-17 11-16 22-18 15-22 25-18 9-13 24-20 13-22 20-11 8-15 18-11 7-16 26-17 5-9 28-24 4-8 29-25 16-20 25-22 8-11 17-13 9-14 24-19 in Kear’s Encyclopedia.

J – 22-18 draw, KE.

K – 11-16 draw, R. Pask’s Key Openings, from 11-16 21-17 16-20.

L – 19-16 draw, K. Hanson – N. Banks, 1958 U.S. Nat. from 12-16 21-17 16-20.

M – 7-10 draw, J. Stiles – N. Banks, 1939 NCA Nat.

N – 27-23 20-24 19-15 3-8 23-19 WW?

O – 23-18 3-8 10-7 8-12 is better, but may also be a RW.

### Michael Holmes – Tim Lavery, round 1 game 2

11-15 22-18 15-22 25-18 12-16 18-15(A) 10-19 24-15 8-12(B) 29-25(C) 4-8(D) 25-22 16-20(E) 23-18 7-11(F) 22-17 3-7(G) 17-14 9-13 30-25 6-10 15-6 1-17 21-14 13-17 25-21 2-6 27-23 6-9 32-27 11-16 18-15 9-18 21-14 7-11 14-10 WW

A – Rare. Elbert Lowder played this five times. See N. Grosvenor – E. Lowder, 2005 GAYP Nat. in my book, the Magical Checker Play of Elbert Lowder.

B – 7-11 may be stronger.

C – 23-18 draw, three times by Lowder.

D – 16-20, K. Albrecht – T. Lavery, 2005 GAYP

Nat.

E – 16-19 draw, W. Fraser – T. Wiswell, 1956 match g.12 from a different order of moves.

F – 9-14 draw.

G – 9-13 may also lose?

### Richard Beckwith – Joe Schwartz, round 1 game 2

11-15 22-17 8-11 17-14(A) 9-18 23-14 10-17 21-14 12-16 26-23(B) 16-19 23-16 11-20 24-19 15-24 28-19 4-8(C) 30-26(D) 8-11 25-22 6-10 29-25 10-17 22-13 7-10 19-16 11-15 16-11 10-14 25-21(E) 15-18 32-28(F) 1-6(G) 28-24 5-9 26-23 18-22 24-19 22-25 19-16 25-30 16-12 30-25 11-8 25-22 8-4 22-25 4-8 2-7 31-26 25-30 26-22 6-10 13-6 7-11 8-15 10-26 27-23 26-31 22-18 31-27 18-9 27-18 6-2 18-14 9-6 30-26 6-1 26-22 1-6 20-24 2-7 3-10 6-15 24-27 15-19 14-10 19-24 27-32 24-28 10-15 12-8\* 15-11 8-3 32-27 28-32 27-23 32-28 23-18 28-32 18-14 32-28 22-26 28-32 26-23 32-28 11-15 draw(H)

A – White Dyke.

B – A popular move in this tournament: Beckwith-Schwartz round 1, Kondlo-Francis round 3, Holmes-Francis round 5, and Kondlo-Schwartz round 6. 25-22 draw PP.

C – 6-9 draw PP, as played in L. Kondlo – J. Francis in round 3.

D – 27-23 draw, R. King – R. Beckwith, 2005

GAYP Nat.

E – 27-23 seems to draw.

F – 27-23 18-27 31-24 20-27 32-23 2-6\* RW, Chinook. 26-23 probably loses.

G – Others win: 5-9! Red should have won, M. Holmes – J. Francis in round 5, or 2-6! RW, L. Kondlo – J. Schwartz in round 6.

H – Good defense by White, after being in a loss.

**Michael Holmes – Sune Thrane, round 2 game 1**

9-14 22-18 5-9 18-15(A) 11-18 21-17 14-21 23-5 8-11 25-22 6-9(B) 24-19(C) 11-16 26-23?(D) 4-8 22-18 8-11 29-25(E) 2-6 25-22 9-13 27-24 16-20 32-27 6-9(F) 31-26 10-15 19-10 7-14 24-19 11-16 27-24 20-27 19-15 21-25 30-21 16-19 23-16 12-19 RW(G)

**A** – Bronx Express. Somewhat weak.

**B** – 4-8 draw PP or 11-15 draw PP.

**C** – 29-25 draw, N. Banks – A. Jordan, 1917 WCM g.31.

**D** – This looks safe, but loses. 27-23 draw.

**E** – 31-26 3-8! 28-24 16-20 32-28 11-16 RW.

**F** – 13-17? 22-13 10-15 draw, D. Brattin – E. Lowder, 1983 Southern Open, from 9-13 24-19 11-16.

**G** – A good win.

**Sune Thrane – Michael Holmes, round 2 game 2**

11-15 22-18 15-22 25-18 8-11 24-19(A) 4-8(B) 26-22(C) 9-13 28-24 11-16 24-20 8-11 30-26(D) 10-15(E) 19-10 6-15 18-14 16-19 23-16 12-19 27-23 19-24 23-19 2-6 19-10 6-15 22-17 13-22 26-17 24-28 29-25 15-18 14-10 7-14 17-10 5-9 21-17 9-13(F) 17-14 13-17 25-21 17-22 21-17 11-15 10-7 3-10 14-7 22-26 31-22 18-25 7-2 draw

**A** – “There is little strength in this formation,” J. Duffy.

**B** – 9-13 draw PP.

**C** – Or 28-24 to same.

**D** – 29-25 draw PP.

**E** – 6-9 draw, R. Grazette – M. Holmes, 2004 Barbados vs. USA.

**F** – 9-14 may be interesting.

**Tim Lavery – Jack Francis, round 2 game 1**

11-15 24-20 15-19(A) 23-16 12-19 22-18 10-14(B) 18-15 14-18(C) 21-17 9-13 17-14 6-9(D) 15-10(E) 8-11 27-23 18-27 32-16(F) 9-18 26-22 7-14 16-7 2-11 22-8 4-11 25-22 1-6 29-25 6-10 30-26 14-17 25-21 3-7 21-14 10-17 26-23 17-26 31-22 7-10 22-18 10-14 18-9 5-14 draw

**A** – = 11-16 24-20 16-19.

**B** – 9-14 draw PP.

**C** – = 10-14 23-19 14-18 22-15 11-18 19-15 12-16 24-20 16-19.

**D** – 6-10 draw PP.

**E** – I assume the game is original from here. 26-22, C. Lawson – J. Hanson, 1920 ACA Nat.

**F** – 31-8 also draws.

**Ed Bruch – Lubabalo Kondlo, round 2 game 1**

11-15 23-19 8-11 22-17 3-8(A) 25-22 11-16 27-23 7-11 24-20 15-24 28-19 10-14 17-10 6-24 22-18 1-6 29-25(B) 9-14(C) 18-9 5-14 25-22 11-15 20-11 6-10 11-7(D) 2-11 32-28 11-16 28-19 15-24 22-18 10-15 18-9 16-19 23-16 12-19 9-6 24-27 31-24 19-28 6-2 15-19 2-7 28-32 26-23 19-26 30-23 32-27 23-19 8-12 7-11 27-24 19-15 24-20 15-10 12-16 10-7 16-19 7-2 20-24 2-7 19-23\* 7-10 23-26 10-15 26-31 11-16 31-26 16-19 24-27 15-18 26-31 19-23 27-24 18-15 4-8 21-17 8-12 17-14 24-28(E) 23-19 31-26(F) 14-10 26-22 10-7 22-17?(G) 15-18 28-32 7-2 32-27 2-6 27-32 6-10 17-21 18-22 32-27 10-14 27-32 19-24 32-28 24-19 28-32 14-18 32-27 19-23 27-32 22-17 21-14 18-9 12-16 9-14 32-28 14-18 28-24 18-15 24-28 15-19 16-20 23-27 WW

**A** – Alma.

**B** – 21-17 draw PP.

**C** – Or 24-28 draw, in Lees’ Guide.

**D** – 32-28 draw, L. Levitt – D. Oldbury, 1976 match g.1 and g.7.

**E** – 12-16 and 16-20 also draws.

**F** – Both kings can stay near this double corner, and Red draws with or without the move.

**G** – Transforming the ending into First Position with two extra kings. 22-26 or others, draw.

### **Lubabalo Kondlo – Ed Bruch, round 2 game 2**

11-15 22-18 15-22 25-18 12-16 29-25 9-13(A) 24-19(B) 16-20 28-24 8-11 19-16 4-8 16-12 10-14(C) 18-9 5-14 25-22 6-10(D) 24-19 11-16 22-18 1-5(E) 18-9 5-14 26-22(F) 14-17 21-14 10-26 31-22 7-10 30-25 8-11 22-18 13-17 25-21 17-22 18-15 11-18 23-7 16-23 27-18 2-11 18-14(G) 22-26 14-10 26-31 21-17 31-26 17-14 26-23 14-9 20-24 9-6 11-15 6-2 23-19 2-6 19-16 6-9 15-19 9-14 19-23 14-17 24-27 17-22 27-31 10-6\* 16-19 6-2 19-15 2-6\* 31-27 6-9 15-10 9-13 27-24 22-18 24-27 18-22 10-15 13-17 15-10 17-13 10-6 13-17 6-2 17-21 2-7 21-17 7-11 17-21 27-24 21-25 11-16 25-30 24-19 22-26\* 16-20 26-31 draw

**A** – Flora Temple variation.

**B** – 18-14 draw PP.

**C** – Rare. Nemesis suggests that 5-9, shown in Kear's, is strong.

**D** – Back to PP.

**E** – 8-11 draw, J. Sturges, g.4 v.32.

**F** – 23-18 draw, J. Sturges, g.4 v.33.

**G** – 32-27 draw, P. Ketchum, Kear's Encyclopedia, p.153 note F.

### **Joe Schwartz – Jim Morrison, round 2 game 1**

11-15 23-18(A) 8-11 27-23 4-8 23-19 10-14 19-10 14-23 26-19 7-14 22-17(B) 14-18 24-20 11-15 19-10 6-15 30-26 8-11(C) 25-22 18-25 29-22 15-19(D) 22-18 9-13 17-14 3-7 20-16 11-20 32-27 1-6 27-24 20-27 31-15 6-10 15-6 2-9 28-24 12-16 24-20 16-19 20-16\* 19-24?(E) 26-23 24-28 23-19 28-32 19-15 32-27 15-10 7-11 16-7 27-23 10-6 23-26 14-10 26-22 18-15 22-18 15-11 9-14 6-2 13-17 10-6 17-22 6-1 22-26 1-6 WW

**A** – Cross.

**B** – 24-20 draw PP.

**C** – 3-7 draw, R. King – J. Morrison, 1996 match g.23.

**D** – 3-7 draw, Ferrey – J. Morrison, 2003 GAYP Nat. 9-13 may be interesting.

**E** – 13-17 16-12 7-11 or 9-13 draw.

### **Jim Morrison – Joe Schwartz, round 2 game 2**

11-15 22-17 15-19(A) 23-16 12-19 24-15 10-19 25-22 8-11 27-23(B) 11-16(C) 17-13(D) 9-14 22-18 5-9 29-25 4-8 31-27(E) 7-11(F) 18-15 11-18 21-17 14-21 23-5 8-11(G) 25-22 11-15 27-23?(H) 3-8 32-27 8-11?(I) 27-24 6-10 22-17 16-20(J) 23-7 20-27 7-3 27-31 26-23 31-27 23-19 15-24 28-19 27-23 19-16 23-18 3-8 10-15 16-11 18-23 17-14 23-18 14-10 18-22 10-7 22-18 7-3 18-14 8-12 15-18 12-16 18-22 16-19 22-25 11-8 25-29 8-4 29-25 4-8 25-22 8-11 14-10 11-15 10-6 3-8 2-7 8-12 6-2 12-16 2-6 16-20 6-2 20-24 22-17 15-18 2-6 24-27 6-2 27-31 2-6 18-22 17-26 31-22 6-2 30-26 2-6 26-23 6-2 23-18 2-6 19-16 6-10 13-9 10-14 18-15 14-18 15-10 18-25 10-3 25-22 3-7 22-17 16-19 WW

**A** – Dyke.

**B** – Or 30-25 draw PP.

**C** – 4-8 draw PP.

**D** – 29-25 draw PP.

**E** – Or 25-22 draw PP.

**F** – 7-10 draw in Kear's Encyclopedia.

**G** – 8-12 may be stronger, but should probably draw, E. Lowder – P. Davis, 1985 GAYP Nat.

**H** – 22-17 or 27-24 are easier.

**I** – 6-10 27-24 16-20 Red strong, but maybe a draw. See M. Holmes – J. Schwartz in round 4.

**J** – Everything loses.

### **Jack Francis – Lubabalo Kondlo, round 3 game 1**

11-15 23-19 8-11 22-17 11-16(A) 24-20 16-23 27-11 7-16 20-11 3-7 28-24 7-16 24-20 16-19 25-22 9-14(B) 29-25 5-9(C) 17-13 4-8 22-17(D) 8-11 26-23 19-26 30-23 11-15 32-28(E) 15-19(F) 23-16 12-19 20-16 10-15 17-10 19-24 28-19 15-24 16-11 6-15 13-6 1-10 11-8 15-19 8-3 10-15\* draw

**A** – Glasgow.

**B** – 4-8 draw PP.

**C** – 4-8 draw PP.

**D** – Or 26-23 draw PP.

**E** – 25-22 draw PP.

**F** – 15-18 draw C.R., A. Huggins – D. Oldbury, 1961 match g.23 from 9-13 23-18 5-9.

**Lubabalo Kondlo – Jack Francis, round 3 game 2**

11-15 22-17 8-11 17-14(A) 10-17 21-14 9-18 23-14 12-16 26-23(B) 16-19 23-16 11-20 24-19 15-24 28-19 6-9(C) 30-26 9-18 26-23 18-22(D) 25-18 7-10 29-25 5-9 25-21 9-13 31-26 4-8 19-15 10-19 23-16 13-17 21-14 8-11 16-7 3-17 18-15 2-7 26-23 17-22 23-19 22-26 27-24 20-27 32-23 26-31 15-11 7-16 19-12 31-27 23-19 27-24 19-15 24-19 15-11 19-16 11-7\* draw

A – White Dyke.

B – 25-22 draw PP.

C – 4-8 was played in other games in this

tournament (including L. Kondlo – J. Schwartz in round 6) and may be better.

D – This may be new. 1-6 draw PP.

**Richard Beckwith – Michael Holmes, round 3 game 2**

11-15 24-19 15-24 28-19 9-14(A) 22-18 5-9 26-22 7-11 27-24 3-7(B) 22-17(C) 11-15 18-11 8-15 25-22 9-13 22-18 15-22 19-15 10-28 17-3 12-16 23-18(D) 16-19 18-15 6-10 15-6 1-10 30-25 22-26 31-22 19-23 22-17 13-22 25-18 23-26 18-14 10-17 21-14 26-30 14-9 30-26 29-25 26-23 25-22 23-19?(E) 22-17?(F) 19-15 17-13 15-10 9-5 10-14 5-1 14-10 13-9 10-14 1-5 14-10 draw

A – 8-11 draw PP.

B – 11-16 draw PP.

C – 32-28 draw, C. Hefter, Lees' Guide, p.121 note m.

D – 30-25 16-20 25-18 2-7 draw.

E – 23-26\* 22-18 26-22 18-15 22-18 15-11 18-14\* 9-5 14-9\* 5-1 9-5\* 3-7 4-8 draw.

F – 9-5 WW.

**Ed Bruch – Sune Thrane, round 3 game 1**

11-15 22-18 15-22 25-18 12-16 18-14 10-17 21-14 9-18 23-14 6-10 29-25 10-17 25-21 8-11(A) 21-14 2-6(B) 26-22 4-8 24-19(C) 16-23 27-18 6-10 31-26 10-17 22-13 7-10 28-24 10-15(D) 26-22 3-7 30-26 7-10 26-23 10-14 18-9 5-14 draw

A – 1-6 draw PP.

B – This rare move was played three times, in rounds 3, 4, and 5, against Mr. Thrane. None of the three games shows any flaw in Mr. Thrane's handling of this part of the opening, and so I doubt

that the three opponents were sharing information on this.

C – Probably new, and not bad. 22-18 draw, J. Morrison – R. King, 1991 match g.7.

D – J. Schwartz played 11-16 in the fifth round.

**Sune Thrane – Ed Bruch, round 3 game 2**

11-15 22-18 15-22 25-18 8-11 29-25 4-8 24-20 9-13(A) 25-22 6-9(B) 28-24 9-14 18-9 5-14(C) 23-18(D) 14-23 27-18 1-5?(E) 24-19 10-15 19-10 7-23 26-19 2-7 22-18 5-9 30-26 7-10 26-22 9-14 18-9 11-15 32-28 15-24 28-19 8-11 31-27 10-14 27-23 3-7 9-5 7-10 22-18 13-17 18-9 WW

A – 10-15 draw PP.

B – 12-16 should draw, R. Bailey – G. Lindsay, 1991 GAYP Nat.

C – = 11-15 24-20 8-11 28-24 10-14 22-18 15-22

25-18 6-10 29-25 9-13 18-9 5-14 25-22 4-8 found in Robertson's Guide.

D – 22-18 draw or 23-19 draw in RG.

E – 12-16 26-23 10-15 draw.

**Jim Morrison – Tim Lavery, round 3 game 2**

11-15 23-19 9-13 22-18 15-22 25-18 7-11(A) 19-15 10-19 24-15 5-9(B) 28-24(C) 12-16 24-20(D) 16-19 27-23 19-24 23-19 1-5?(E) 21-17 13-22 26-17 9-13 30-26 13-22 26-17 24-28 29-25 8-12 15-8 4-11 19-15?(F) 12-16 15-8 3-12 20-11 2-7 11-2 12-16 2-9 5-30 draw

A – 10-14 draw PP.

B – 12-16 draw PP.

C – 29-25 draw PP.

D – 29-25 should draw, M. Tinsley – J. Sprague, 1954 U.S. Nat.

E – 3-7 32-28 7-10 draw.

**F** – 25-21 first, WW.

**Joe Schwartz – Clayton Nash, 3 game 1**

11-15 22-18 15-22 25-18 12-16 29-25 9-13 18-15(**A**) 10-19 24-15 5-9 23-18 16-19(**B**) 27-23(**C**) 8-12 23-16 12-19 32-27 7-10 25-22 2-7 27-24 19-23 26-19 10-14 19-16 14-23 22-18(**D**) 23-27(**E**) 24-20 27-32(**F**) 16-11 7-16 20-11 3-8 11-7 8-11 15-8 4-11 7-3(**G**) 6-10?(**H**) 3-7 10-15 7-16 15-22(**I**) 16-19 22-25 19-23?(**J**) 25-29\* 28-24 1-6?(**K**) 24-19 9-14 19-15 29-25 15-11(**L**) 25-22 11-7\* 6-9 23-26?(**M**) 14-18\* 26-17 13-22 7-2 32-28 2-6 9-13 6-10 18-23 10-14 22-25\* 31-26 23-27 14-18 27-31 18-22 25-29 26-23 28-24 23-18 draw(**N**)

**A** – Rare.

**B** – 16-20 should draw, J. Morrison – T. Laverty, 1985 GAYP Nat.

**C** – 25-22 draw, W. Geckler – H. Reynolds, 1915 ACA Nat.

**D** – 15-11 7-10 11-7 White is fairly strong.

**E** – 7-11 may be easier.

**F** – Or 4-8 31-24 8-11 15-8 3-19 24-15 7-10 15-11 10-15 draw.

**G** – 7-2 11-16 18-14 draws.

**H** – 11-16-20 seems to draw.

**I** – WW, Chinook.

**J** – 19-15 WW or 28-24 WW, Chinook.

**K** – 29-25\* draw, Chinook.

**L** – 23-26 WW may be easier.

**M** – 7-2 or others win, Chinook.

**N** – An interesting game.

**Richard Beckwith – Sune Thrane, round 4 game 1**

11-15 22-18 15-22 25-18 12-16 18-14 9-18 23-14 10-17 21-14 6-10 29-25 10-17 25-21 2-6(**A**) 21-14 8-11 26-22 4-8 24-19 16-23 27-18 8-12(**B**) 28-24 12-16 31-26 6-10 30-25 10-17 22-13 16-20 32-27 7-10 24-19 10-14 18-9 5-14 13-9 14-18?(**C**) 19-16?(**D**) 18-22! 16-7 22-31 27-23 3-10 9-6 10-15 RW

**A** – 1-6 draw PP.

**B** – 6-10 was played by E. Bruch in the previous round and by J. Schwartz in the next round.

**C** – Sets an unsound trap. A pretty shot can cloud your mind. 3-7 draws.

**D** – 19-15? is the same loss. 9-5 WW.

**Sune Thrane – Richard Beckwith, round 4 game 2**

11-15 22-17 9-14(**A**) 25-22 15-19(**B**) 24-15 10-19 17-10 6-15 23-16 12-19 30-25(**C**) 5-9 22-18 15-22 25-18 7-10 29-25(**D**) 10-14 18-15 8-11 15-8 4-11 25-22 2-7 27-23 1-6?(**E**) 23-16 11-20 22-17 7-10 17-13 10-15 28-24 20-27 32-23 15-19 23-16 14-18 16-11 9-14 31-27 6-10 11-7 10-15 7-2 3-8 2-6 WW(**F**)

**A** – = 9-14 22-17 11-15.

**B** – Double Corner Dyke. Or 8-11 draw PP.

**C** – 21-17 draw PP.

**D** – Draw, BC, vol.2 p.8 note C. 21-17 draw PP.

**E** – 9-13 23-16 11-20 32-27 7-10 28-24 3-7 24-19 14-17 draw.

**F** – A good win.

**Tim Laverty – Lubabalo Kondlo, round 4 game 1**

9-14 22-17 11-15 25-22 8-11 29-25(**A**) 6-9 17-13 2-6 23-18(**B**) 14-23 27-18 4-8 24-20(**C**) 10-14 31-27 14-23 27-18(**D**) 15-19 22-17(**E**) 7-10 17-14 10-17 21-14 12-16 26-23 19-26 30-23 16-19 23-7 3-17 25-21 17-22 20-16 22-26 16-12 8-11 12-8 26-30 8-3 30-26 3-8 26-23 8-15 23-14 28-24 14-10 32-28 10-19 24-15 draw

**A** – Or 17-13 draw PP.

**B** – Or 23-19 into the Souter.

**C** – = 10-14 22-17 7-10 17-13 11-15 25-22 8-11 24-20 2-7 29-25 4-8 23-18 14-23 27-18. 21-17 draw, R. Thomson – J. MacFarlane, 1948 British Open.

**D** – This may be stronger than 26-10 draw, C. F. Barker – C. H. Freeman, in both Lees' Guide and Kear's Encyclopedia.

**E** – 21-17 may be somewhat stronger, F. Tescheleit in Lees' Guide, p.44 note e.

#### **Lubabalo Kondlo – Tim Lavery, round 4 game 2**

11-15 22-18 15-22 25-18 12-16 18-15(A) 10-19 24-15 16-20(B) 29-25 8-12 25-22(C) 4-8 28-24(D) 7-11(E) 30-25 11-18 22-15 9-14 26-22 14-18 23-14 6-10 15-6 1-26 31-22 8-11 24-19 11-16 22-17 16-23 27-18 12-16 18-14 16-19 14-9 5-14 17-10 19-23 21-17 23-26 17-13 26-30 25-21 30-25 10-6 2-9 13-6 25-22 6-1 20-24 1-6 3-7 draw

**A** – Lavery also played this in round 1, against Michael Holmes.

**B** – 7-11 may be stronger.

**C** – 23-19 probably draws, K. Albrecht – T.

Lavery, 2005 GAYP Nat.

**D** – Lavery played 23-18 in the other game.

**E** – 12-16! 15-10 7-14\* 23-18 14-23 26-12 may be strong for Red.

#### **Jim Morrison – Clayton Nash, round 4 game 1**

11-15 22-18 15-22 25-18 12-16 29-25 16-20(A) 18-14(B) 9-18 23-14 10-17 21-14 8-11 24-19 4-8 27-23 8-12 23-18 11-15(C) 18-11 7-23 26-19 6-9 30-26(D) 9-18 28-24 20-27 32-14 1-6(E) 25-22(F) 2-7(G) 26-23 7-11 22-18 6-10 14-7 3-10 31-26\* 11-16 26-22 5-9 22-17 9-13 18-15 13-22 15-6 22-26 19-15 26-31 23-18 31-26 15-10 26-22 18-15 draw

**A** – 9-13 draw PP or 10-14 draw PP.

**B** – “Easy for White,” J. Duffy.

**C** – 11-16 draw, W. Strickland – W. Gardner, 1886 match g.43.

**D** – 31-26 draw, W. Gardner – A. Heffner, 1905 IM.

**E** – 2-7 26-23 1-6 draw, E. Lowder – H. Burton, 1973 Lakeside.

**F** – 26-22 draw, J. Ferrie – H. Freedman, 1899 Scottish Ty.

**G** – 6-10 draw, F. Dunne – J. Richmond, 1892 English Ty.

#### **Michael Holmes – Joe Schwartz, round 4 game 1**

11-15 22-17 15-19(A) 24-15 10-19 23-16 12-19 25-22 8-11 27-23(B) 11-16(C) 17-13 9-14 22-18 5-9 29-25 4-8 31-27 7-11(D) 18-15 11-18 21-17 14-21 23-5 8-11(E) 25-22 11-15 27-23?(F) 3-8 32-27 6-10!(G) 27-24 16-20 23-16 20-27 16-12 8-11 12-8 11-16 8-3 16-20(H) 26-23 20-24 28-19 15-24 3-8 27-31 23-19?(I) 24-28 19-16 28-32 16-11 10-15 22-17 32-27 8-3(J) 27-23(K) 17-14 31-27 14-10 23-19 3-8 19-16 10-7 16-12 7-3 27-23 8-4 23-18 3-7 18-14 7-3 14-10 4-8 12-16 8-12 16-7 RW(L)

**A** – Dyke. This opening was played three times in this tournament: J. Schwartz – R. Beckwith in round 1, J. Morrison – J. Schwartz in round 2, and this game.

**B** – This move was played three times in the tournament.

**C** – And this move was played twice.

**D** – 7-10 draw PP.

**E** – In the notes to the Morrison – Schwartz game, I recommended 8-12.

**F** – As I typed earlier, 22-17 or 27-24 are easier.

**G** – A great improvement over 8-11? which was the losing move in the Morrison – Schwartz game. Perhaps Mr. Holmes studied that game.

**H** – 16-19 26-23! seems to draw.

**I** – 22-17 24-28 8-11 28-32 23-18!! and 18-14 and 14-10 and 13-9 and 17-13 draw.

**J** – 8-12 makes sense, but 31-26 30-23 27-18 is a RW, according to Chinook.

**K** – Perhaps no more difficult than 30-26 30-23 27-18 RW, Chinook.

**L** – A very nice ending by Michael Holmes.

#### **Joe Schwartz – Michael Holmes, round 4 game 2**

11-15 22-18 15-22 25-18 12-16 29-25 16-20 24-19(A) 9-13(B) 25-22(C) 8-11(D) 19-16 4-8 28-24(E) 5-9(F) 16-12?(G) 1-5(H) 30-25 9-14(I) 18-9 5-14 22-18 14-17 21-14 10-17 18-14(J) 17-21 25-22 21-25 14-9 25-30 9-5 6-10 5-1 30-25(K) 1-6!!(L) 2-9 24-19 25-18 23-5 11-16(M) 26-23 8-11?(N) 5-1 10-14 1-6 14-17 6-2 7-10 2-6 11-15 32-28 15-24 6-15 WW

**A** – Maybe more popular than 18-14.

**B** – Back to well-known play. 8-11 draw PP.

**C** – 28-24 draw PP, as played in the Bruch – Francis game, shown next.

**D** – 5-9 draw PP.

**E** – 16-12 draw PP.

**F** – = 11-15 22-18 15-22 25-18 12-16 29-25 9-13 25-22 16-20 24-19 5-9 28-24 8-11 19-16 4-8.

**G** – 32-28 may draw.

**H** – This may win. 11-16 is a popular RW in Kear's Encyclopedia p.154 v.34, also L. Balderson – E. Lowder, 1999 GAYP Nat. on p.416 of my

Lowder book.

**I** – 11-16 RW.

**J** – 26-22 may be more difficult.

**K** – There are other ways to play, but this may be easiest.

**L** – Alertly forcing an ending similar to the ending in the previous game, but this is a draw, so far.

**M** – 11-15 19-16 15-18 may be easier.

**N** – 13-17! 5-1 17-22! 1-5 (1-6? 22-26!! RW) 8-11! draw, is the right order of moves.

#### **Ed Bruch – Jack Francis, round 4 game 1**

11-15 22-18 15-22 25-18 12-16 29-25 9-13 24-19(**A**) 16-20 28-24 8-11 19-16 10-15(**B**) 26-22 6-10 21-17 5-9 25-21 1-5 30-26 9-14 18-9 5-14 24-19 15-24 22-18 13-22 26-17 10-15 18-9 15-19 23-18 19-23 17-13 23-26 31-22 24-31 9-6 2-9 13-6 4-8 16-12 11-16 6-2 8-11 22-17 31-26 18-15 11-18 2-11 18-23 17-13 16-19 21-17 19-24 17-14 24-27 14-10 27-31 13-9 31-27 9-6 27-24 6-1 24-19 1-6 19-16 11-7 20-24 7-2 16-19 2-7 19-16 7-2 24-28 draw(**C**)

**A** – 18-14 draw PP.

**B** – 4-8 draw PP. I guess that the rest of this game

is original.

**C** – Good game.

#### **Jack Francis – Ed Bruch, round 4 game 2**

11-15 22-17 9-14 25-22 15-19(**A**) 24-15 10-19 23-16 12-19 17-10 6-15 21-17 5-9 29-25 8-12 17-13(**B**) 2-6 27-23(**C**) 4-8 23-16 12-19 25-21(**D**) 8-12 32-27 7-10 27-24 3-7 31-27 1-5 22-17(**E**) 15-18 24-15 10-19 30-25(**F**) 12-16 26-22 19-23 22-15 23-32 15-10 6-15 13-6 7-11 6-2 15-19(**G**) 2-7 32-27 7-3(**H**) 16-20 3-8 11-16 8-12 27-31 25-22 31-27(**I**) 17-14 27-23 14-10 20-24 10-7 23-26 7-3 26-17 21-14 24-27 3-7 16-20 12-16 19-23 7-10 27-31 10-15 31-26 15-18 23-27 16-19 27-31 18-23 26-30 14-10 5-9 10-6 9-14 6-1 14-17 1-5 17-21 5-9 21-25 9-14 25-29 14-18 29-25 18-15 draw

**A** – Double Dorner Dyke.

**B** – 25-21 draw PP.

**C** – 25-21 draw PP.

**D** – Or 32-27 should draw, E. Bruch – R. Hallett, 2005 GAYP Nat. and earlier.

**E** – 30-25 draw, J. Lane – A. Jordan, Kear's Encyclopedia p.327 note A, also played twice in the

1905 IM.

**F** – 27-24 draw, H. Reynolds – E. Hunt, 1929 Cedar Point Nat.

**G** – 16-20 draw, C. Crawford – R. Hallett, 1986 Florida Open.

**H** – Keeping this king on 7 also draws.

**I** – 16-20 draws more quickly.

#### **Tim Lavery – Richard Beckwith, round 5 game 1**

9-14 22-17 11-15 25-22 8-11 23-19 6-9 17-13 2-6(**A**) 22-17(**B**) 4-8 27-23 14-18 23-14 9-18 26-23 18-27 32-23 12-16(**C**) 19-12 15-19 24-15 11-27 31-24 8-11 29-25(**D**) 11-16(**E**) 17-14(**F**) 10-17 21-14 16-20 24-19 20-24(**G**) 25-21 7-11?(**H**) 19-16 11-20 28-19 WW(**I**)

**A** – = Souter.

**B** – 29-25 draw PP.

**C** – 10-14 draw PP.

**D** – 30-26 11-16 26-23 16-20 24-19 20-24 23-18 24-27 18-14 27-31 14-9 5-14 12-8 3-12 19-15 draw, H. Spayth in Lees' Guide, p.139 note f.

**E** – 10-15 draw, may be interesting.

**F** – 24-20 7-11 17-14 draw, may also be interesting.

**G** – 6-9 draw, but Red may have hoped for more.

**H** – 24-27 28-24 27-31 24-20 31-27 21-17 27-24 19-16 24-19 16-11 7-16 20-11 19-15 11-7 3-10 14-7 15-11 7-3 5-9 draw.

**I** – White trades on 7.



### Richard Beckwith – Tim Lavery, round 5 game 2

11-15 22-18 15-22 25-18 12-16 29-25 10-14 18-15(A) 16-20 23-19(B) 8-12 25-22?(C) 4-8?(D) 15-10! 6-15 19-10 8-11(E) 24-19 11-15?(F) 22-17 15-24 28-19 9-13 19-15 13-22 26-17 14-18(G) 27-24 7-14 17-10 20-27 32-14 2-6 15-11! 6-15 21-17 15-19 11-7 3-10 14-7 19-24 7-3 12-16 3-7 16-20 7-10 24-27 31-24 20-27 17-14\* 27-32 10-15\* 32-27 14-10 27-23 10-7 5-9 7-3 1-5 3-8 9-14 8-12\* 23-27 15-19(H) 27-31! 19-15\* 31-27 12-16 27-23 16-20! 23-27 15-19! 5-9(I) 19-24?(J) 27-23\* 24-19 23-16 20-11 14-18\* draw(K)

**A** – 24-19 draw PP.

**B** – Better is 24-19 draw PP, including L. Balderson – T. Lavery, 1985 GAYP Nat., a game which ended in a RW.

**C** – 26-23 draw PP, including R. King – T. Lavery, 1989 GAYP Nat, which also ended in a RW.

**D** – 14-18 RW?

**E** – 2-6?? loses.

**F** – The loser. 11-16 seems to draw.

**G** – Temporarily gives up a piece, and may be best, as others seem to lose more decisively.

**H** – A little experiment that failed, but it was worth a try.

**I** – 27-31? 19-24 WW.

**J** – 19-15! 27-23 20-16\* 23-27 16-19 9-13 15-10! 14-17 WW.

**K** – A wonderful game, even with the mistakes, or because of the mistakes.

### Clayton Nash – Lubabalo Kondlo, round 5 game 1

11-15 22-17 9-13 17-14(A) 10-17 21-14 6-10(B) 25-21 10-17 21-14 2-6 29-25 6-10 25-21 10-17 21-14 15-18 24-19(C) 8-11(D) 27-24 18-27 32-23 1-6 30-25 6-9(E) 31-27 9-18 23-14 13-17 25-21 5-9 14-5 11-16 21-14 16-32 5-1 32-27 24-20 27-31(F) 26-22 31-26 22-17 26-22 17-13 22-17 14-9 17-14 1-5 14-10(G) 5-1 7-11 9-6 3-8 6-2 11-15 2-6 8-11 6-9 12-16 9-5(H) 16-19 13-9 19-23(I) 9-6 23-27 5-9 27-32(J) 6-2 4-8(K) 9-13 32-27 13-17 27-23(L) 2-6 23-19 6-9 19-23?(M) 9-14 10-7 1-6 23-19 6-10 7-2 10-7 19-23(N) 7-16 8-11 16-7 2-11 14-10 15-19 17-14\* 23-27 14-18 19-23 10-15 11-8 20-16 8-12 16-11\* 12-16 15-19 WW

**A** – Boston.

**B** – 8-11 draw PP.

**C** – 30-25 should probably draw, C. Nash – A. Ferguson, 2004 USA vs. Barbados.

**D** – Or 1-6 to same.

**E** – 13-17 draw, G. Leclair – J. Sprague, 1952 U.S. Nat. and A. Moiseyev – R. Williams, 2004 USA vs. Barbados, a game which paralleled this Nash – Kondlo game for many moves. Here is the Moiseyev – Williams game, if you would like to compare:

11-15 22-17 9-13 17-14 10-17 21-14 6-10 25-21 10-17 21-14 2-6 29-25 6-10 25-21 10-17 21-14 15-18 24-19 1-6 27-24 18-27 32-23 8-11 30-25 13-17 25-21 6-9 31-27 9-18 23-14 5-9 14-5 11-16 21-14 16-32 26-22 32-27 24-20 27-23 22-17 23-26 17-13 26-22 5-1 22-17 14-9 17-14 1-5 14-10 5-1 7-11 9-6 3-8 6-2 11-15 2-6 10-14 6-2 8-11 1-6 14-10 6-1 12-16 2-6 4-8 6-2 8-12 2-6 16-19 6-2 19-23 2-6 23-27 6-9 27-32 9-5 32-27 13-9 27-23 9-6 23-18 6-2 15-19 2-6 10-14 6-2 19-23 1-6 23-27 2-7 18-15 7-16 12-19 20-16 27-31 5-1 31-27 6-2 27-24 1-6 14-10 6-1 24-20 16-12 15-11 2-6 10-14 1-5 19-23 RW, A.

Moiseyev – R. Williams, 2004 USA vs. Barbados

**F** – 7-10 makes sense. Red has a temporary advantage, because of the soon-to-be-crowded double corner. I would guess that Mr. Nash has studied this ending.

**G** – Leaving the king on 14 does not prevent a third king.

**H** – I don't think Red has any advantage now, and he should grab a draw. In the Moiseyev – Williams game, White didn't try to advance the piece on 13 until much later, and lost a long ending.

**I** – 19-24 draw.

**J** – Or 10-14 draw.

**K** – Or 10-14 draw.

**L** – Or 27-24 draw.

**M** – 19-24 draw. Apparently, Red still thought he had a draw, but he should have begun to sense danger. It is easy to criticize the earlier moves, but a draw here would have made this game one of the best of the tournament.

**N** – 19-16 7-3 16-12 (8-12 3-8 WW) 28-24 WW.

### **Lubabalo Kondlo – Clayton Nash, round 5 game 2**

11-15 22-18 15-22 25-18 12-16 29-25 9-13 18-15(A) 10-19 24-15 16-20(B) 25-22 8-12 22-18(C) 7-10 27-24(D) 20-27 31-24 10-19 23-16 12-19 24-15 5-9 26-23?(E) 9-14?(F) 18-9 1-5 28-24 5-14 30-26 3-8 23-19 14-17 21-14 6-10 15-6 2-18 26-23 draw

**A** – Also played in J. Schwartz – C. Nash in round 3.

**B** – 5-9 was played in the Schwartz – Nash game.

**C** – 23-18 should probably draw, J. L. Richmond – J. P. Reed, 1887 match g.8, but not 28-24? 13-17 RW?

**D** – 23-19 draw, J. Schwartz – T. Laverty, 2005 GAYP Nat.

**E** – 28-24 draw.

**F** – 3-7!! 23-19 4-8! 28-24 7-11 32-27 9-14 18-9 11-18 9-5 6-10 19-16 (others lose) 18-23 27-18 13-17 RW.

### **Sune Thrane – Joe Schwartz, round 5 game 1**

11-15 23-18 8-11 27-23 10-14 22-17(A) 15-22 17-10 6-15 26-17(B) 7-10(C) 17-13 9-14 25-22 4-8(D) 32-27 1-6?(E) 22-17! 2-7 30-26 5-9 29-25 12-16 24-19 15-24 28-12 11-15 23-19 15-24 27-20 8-11 26-23 11-15 25-22 7-11 31-27 3-7 WW(F)

**A** – 23-19 draw PP.

**B** – The more popular way.

**C** – 11-16 draw PP. See L. Kondlo – R. Beckwith in round 7.

**D** – 11-16 draw PP.

**E** – 2-6 30-26 3-7 24-19 should draw, W. R. Barker

– R. D. Yates, 1877 match g.9. The game ended as a fairly long WW, but Kear's Encyclopedia shows it as a draw, ending with the moves shown here.

**F** – A nice win by Schwartz. The scoresheet says RW.

### **Joe Schwartz – Sune Thrane, round 5 game 2**

11-15 22-18 15-22 25-18 12-16 18-14 10-17 21-14 9-18 23-14 6-10 29-25 10-17 25-21 2-6(A) 21-14 8-11 26-22 4-8 24-19 16-23 27-18 6-10 31-26 10-17 22-13 7-10 28-24 11-16(B) 26-23 16-20 32-27 8-11 30-26(C) 10-14 18-9 5-14 24-19?(D) 14-17 23-18 17-21 19-15 11-16 15-10 21-25 18-14 25-30 27-23 20-24 14-9 24-27 23-19 30-23 19-12 23-19 9-6 19-16 6-2 16-11 13-9 27-31 9-5 31-26 2-6 26-22 6-2 22-17 2-6 17-13 6-2 13-9 10-6 1-10 5-1 9-5 1-6 10-15 6-10 11-16 RW

**A** – 1-6 draw PP.

**B** – E. Bruch played 10-15, in the third round.

**C** – 24-19 may be easier.

**D** – Almost anything else draws, as the pieces on 24 and 27 are safe where they are.

### **Jack Francis – Michael Holmes, round 5 game 1**

11-15 22-18 15-22 25-18 12-16 29-25 9-13 18-14 10-17 21-14 16-20 23-18 8-11(A) 24-19 4-8(B) 27-23 6-9(C) 25-21(D) 1-6(E) 19-15 13-17 23-19 9-13 31-27?(F) 6-9(G) 15-10 17-22 26-17 13-22 10-6 9-13(H) 6-1 8-12 27-23 11-16 14-9 5-14 18-9 7-10 21-17(I) 2-7 1-6?(J) 10-15 19-10 7-21 6-10 22-26 10-15(K) 26-31 15-18 31-26 23-19 16-23 18-27 26-22 27-23 22-17 9-6 17-14 6-1 3-8 1-5 8-11 23-26 13-17 5-1 11-15 1-5 15-18 5-1 18-22 26-31 22-25 31-26 25-29 28-24 20-27 32-23 14-10 1-5 10-6 5-1 6-9 1-5 9-13 26-31 29-25 23-19 25-22 19-15 22-18 15-10 18-14 10-7 14-10 7-2 10-6 2-9 13-6 5-1 6-10 31-26 12-16 1-5 10-14 5-1 16-20 1-5 20-24\* 5-1 24-28 1-5 28-32\* 5-1 32-27 26-31 27-23 31-26 23-18 1-5 18-15 5-1 15-10 1-5 10-6 5-1 6-9 1-5 9-13 5-1 14-18 26-31 RW

**A** – 6-10 draw PP.

**B** – 6-10 draw in Duffy's Single Corner.

**C** – 8-12 draw, in Pask's Key Openings.

**D** – 19-15 should probably draw, J. Francis – M. Holmes, 2005 GAYP Nat.

**E** – 8-12 or others may draw.

**F** – 32-27!! WW?, as in J. Francis – C. Nash in round 7.

**G** – 17-22? loses.

**H** – 22-25 is also strong.

**I** – 1-6 10-14 19-15 may be easier.

**J** – 23-18!! 16-23 1-6! 10-14 17-10 7-14 9-5 14-17

6-10 17-21 22-26 10-14 26-31 14-18 draw.

**K** – 23-18 also loses.

**Michael Holmes – Jack Francis, round 5 game 2**

11-15 22-17 8-11 17-14(**A**) 10-17 21-14 9-18 23-14 12-16 26-23(**B**) 16-19 23-16 11-20 24-19 15-24 28-19 4-8 25-22(**C**) 6-10 30-26 10-17 22-13 8-11 29-25 7-10 19-16 11-15 16-11 10-14 25-21?(**D**) 15-18 32-28 5-9!(**E**) 13-6 1-10 27-24 20-27 31-24 10-15 24-19 15-24 28-19 18-23 26-22 23-26 22-17 14-18 17-14 26-31 21-17 31-26 19-16 26-23 14-9 23-19 16-12 19-15 11-8 18-22 17-13 15-10 9-5 22-25?(**F**) 5-1 draw(**G**)

**A** – White Dyke.

**B** – 25-22 draw PP.

**C** – A different move-order from other games in this tournament.

**D** – As I suggested in the Beckwith – Schwartz game in round 1, 27-23 seems to draw.

**E** – Other moves: 1-6? draw, R. Beckwith – J.

Schwartz game round 1, or 2-6! RW, L. Kondlo – J. Schwartz in round 6.

**F** – 2-6 5-1 10-7 RW.

**G** – A pretty game by Holmes, except for the fumble at the end.

**Richard Beckwith – Jack Francis, round 6 game 1**

11-15 22-17 9-13 24-20(**A**) 13-22 25-11 8-15 21-17 5-9 17-13 9-14 29-25 15-18(**B**) 28-24 10-15(**C**) 26-22 4-8 32-28 7-11 24-19 15-24 22-15 11-18 28-19 3-7 31-26 7-11 19-15 6-9 13-6 1-19 23-7 2-11 25-21 11-15 30-25 8-11 26-22 12-16 22-17 16-19 17-10 18-23 27-18 15-29 draw

**A** – Wagram.

**B** – 4-8 draw PP.

**C** – 4-8 draw PP. Perhaps the game is original from this move.

**Jack Francis – Richard Beckwith, round 6 game 2**

11-15 23-18 8-11 27-23 4-8 23-19 10-14 19-10 14-23 26-19 6-15(**A**) 19-10 7-14 22-17(**B**) 14-18 25-22 18-25 29-22 12-16 22-18 8-12 32-27(**C**) 1-6(**D**) 24-20(**E**) 9-13 17-14 16-19 30-26(**F**) 3-7 27-23 6-9 23-16 12-19 31-27 11-15 18-11 9-18 27-24 7-16 20-11 18-23 24-15 23-30 11-8 30-26 15-11 draw

**A** – A favorite of Jack Francis. 7-14 draw PP.

**B** – 30-26 draw PP, including J. Francis – A. Moiseyev, 1999 GAYP Nat.

**C** – 30-26 draw, J. Francis – A. Moiseyev, 2003 GAYP Nat. and 2005 GAYP Nat.

**D** – 3-7 draw, J. Francis – A. Moiseyev, 1999

GAYP Nat. and 2001 GAYP Nat.

**E** – 30-26 draw, J. Francis – J. Morrison, 2003 GAYP Nat. and J. Francis – R. Beckwith, 2005 GAYP Nat.

**F** – 27-24 draw, J. Francis – R. Beckwith, 2003 GAYP Nat.

**Joe Schwartz – Lubabalo Kondlo, round 6 game 1**

11-15 23-19 8-11 22-17 11-16(**A**) 24-20 15-24 20-11 7-16 27-11 3-7 11-8(**B**) 4-11 17-13 9-14 25-22 11-15 31-27(**C**) 5-9(**D**) 22-17 12-16 29-25 1-5 27-24 16-19 24-20 19-24(**E**) 28-19 15-24 20-16(**F**) 14-18 16-12 9-14?(**G**) 26-22 18-23 22-18 7-11 18-9 5-14 12-8 11-15 8-3 15-18(**H**) 32-28 24-27 28-24 27-31 24-19 31-26 3-8 26-22 8-11 22-29 19-15 10-19 17-1 19-24 11-15 18-22 15-19 WW

**A** – Glasgow.

**B** – Not as bad as its reputation.

**C** – 22-17 should draw, M. Tinsley – M. Chamblee, 1947 match g.17.

**D** – 15-19 draw, E. Bruch – Chinook, 1992 Southern Open.

**E** – 14-18 draw.

**F** – 25-22!! 7-11 26-23 24-27 23-19 27-31 20-16 11-20 19-15 10-19 17-1 19-23 and the resulting position is a WW, according to Chinook.

**G** – 10-15 12-8 7-10 draw.

**H** – 24-27 loses.

### **Lubabalo Kondlo – Joe Schwartz, round 6 game 2**

11-15 22-17 8-11 17-14(A) 10-17 21-14 9-18 23-14 12-16 26-23 16-19 23-16 11-20 24-19 15-24 28-19 4-8 30-26 8-11 25-22 6-10 29-25 10-17 22-13 7-10 19-16 11-15 16-11 10-14 25-21?(B) 15-18 32-28 2-6(C) 28-24 5-9 26-23 18-22 24-19 1-5 19-16 22-26 31-22 14-17 21-14 9-25 23-18 3-7 RW

**A** – White Dyke.

**B** – As I suggested in the Beckwith – Schwartz game in round 1, 27-23 seems to draw.

**C** – Other moves here: 1-6? draw, R. Beckwith – J. Schwartz game round 1, or 5-9! Red should win, M. Holmes – J. Francis in round 5.

### **Clayton Nash – Sune Thrane, round 6 game 1**

11-15 22-18 15-22 25-18 8-11 29-25 10-14(A) 25-22(B) 7-10 24-20 12-16 27-24 4-8 24-19 8-12 32-27(C) 9-13 18-9 5-14 22-18 1-5 18-9 5-14 26-22(D) 13-17 22-13 14-18 23-7 16-32 21-17 3-10 30-25?(E) 11-15 25-21 15-18 17-14 10-17 21-14(F) 18-22\* 14-9 22-25\* 9-5 25-30 5-1 6-10\* 1-5(G) 30-25\* 5-9 25-22 9-6 2-9 13-6 22-18 6-1 10-14 1-5 14-17 5-9 17-22 9-5 22-25 5-1 25-30 1-5 30-25 5-1 18-22 1-5 22-26 31-22 25-18 5-1 32-27 1-6 27-23 6-10 23-19 10-6 19-15 6-9 15-11 9-6 18-15 6-9 12-16 9-14 16-19 14-9 19-23 9-14 23-27 14-9 27-32 9-14 32-27 14-9 27-23 9-14 23-19 14-9 RW(H)

**A** – A favorite of C. Nash.

**B** – 24-19, C. Nash – E. Lowder, 2003 GAYP Nat. or 24-20 draw, C. Nash – J. Clarke, 2004 USA vs. Barbados.

**C** – 28-24 draw, C. Nash – J. Ferrell, 2003 GAYP Nat.

**D** – Or 19-15 draw PP.

**E** – 30-26!! draw PP, and C. Nash – E. Bruch in round 1.

**F** – RW, Chinook.

**G** – 13-9 RW, H. Reynolds – J. Hanson, 1915 ACA Nat.

**H** – A good win by Nash.

### **Sune Thrane – Clayton Nash, round 6 game 2**

11-15 22-18 15-22 25-18 12-16 29-25 16-20 24-19 10-15(A) 18-11 8-24 28-19 9-14(B) 25-22 6-10(C) 22-17! 4-8 19-15(D) 10-19 17-10 7-14 23-16 2-7 26-23 8-11 23-19 5-9 16-12 1-6(E) 19-15 11-18 21-17 14-21 27-24 20-27 32-5 6-10 5-1 7-11 1-6 10-15\* 31-27 15-18\* 6-10 18-22\* 10-14 22-25\* 14-18 25-29\* 27-24 29-25 24-20 25-29 draw(F)

**A** – 8-11 draw PP.

**B** – 4-8 draw, P. Bryan – N. Wenberg, 2005 GAYP Nat.

**C** – 4-8 may be safer.

**D** – 26-22! 8-11 19-16 2-6 31-26 5-9 17-13 White strong.

**E** – 9-13 may be somewhat stronger.

**F** – An interesting game.

### **Jim Morrison – Michael Holmes, round 6 game 1**

11-15 22-18 15-22 25-18 12-16 29-25 9-13 18-14 10-17 21-14 16-20 23-18 6-10 25-21 10-17 21-14 1-6 26-23 13-17 31-26 17-21(A) 26-22(B) 8-12 22-17(C) 12-16 17-13 16-19 23-16 6-10 14-9(D) 5-23 27-18 20-27 32-23 draw(E)

**A** – 8-11 draw PP.

**B** – Or 18-15 draw PP.

**C** – More popular than 23-19, which is the draw in Duffy's Single Corner.

**D** – 24-19 draw, R. Williams – M. Holmes, 2004 Barbados vs. USA.

**E** – Continue 4-8 28-24(E1) 8-11 24-20 10-15 18-14 15-18 23-19 18-23 14-9 23-27 9-6 2-9 13-6 27-32(E2) 16-12 (6-2 draw, as in the Morrison – Ferrell game in E2) 32-27 19-16 27-23 6-1 23-18

1-6 18-15 6-1 15-10 1-5 10-6 5-1 6-2 1-5 7-10 16-7 2-11 5-9 10-15 9-14 15-19 14-18 19-24 30-26? (18-23 draw) 21-25 26-23 25-30 23-19 30-26?(E3) draw, H. Freedman – W. K. Campbell, 1898 Scottish Ty.

**E1** – Shown in Lees' Guide without credit (p.128 note s), where it says "critical for White."

**E2** – 27-31 6-2 (an easier draw) 31-27 30-26 (19-15? loses) 27-23 26-22 21-25 22-17 25-30 draw, J. Morrison – J. Ferrell, 2003 GAYP Nat.

**E3** – 11-7\* 19-15 7-2\* 18-23 24-28\* 20-16 2-7\*      15-11 7-10\* 11-7 28-32 7-2 10-15\* RW.

**Tim Laverty – Ed Bruch, round 6 game 1**

12-16 24-20 11-15(**A**) 20-11 7-16 22-18 15-22 25-18 8-11 28-24(**B**) 16-20 24-19 10-15(**C**) 19-10 6-22 26-17 11-15(**D**) 29-25 9-13(**E**) 17-14 4-8 25-22 8-11?(**F**) 30-26 2-6 32-28?(**G**) 6-9 22-17 9-18 23-14 13-22 26-17 15-18 14-10 18-22 17-14 11-15 21-17 15-18 draw

**A** – = 11-15 24-20 12-16. Laverty played this against Michael Holmes in the first round.

**B** – Holmes played 29-25.

**C** – 2-7 draw PP.

**D** – 9-13 draw, T. Laverty – E. Bruch, 2005 GAYP

Nat.

**E** – 4-8 draw PP, may be easier.

**F** – 15-19 23-16 8-11 may draw.

**G** – 14-10 WW, H. Burton – E. Fuller, 1970 U.S. Nat.

**Ed Bruch – Tim Laverty, round 6 game 2**

11-15 22-18 15-22 25-18 12-16(**A**) 29-25 8-11(**B**) 18-14(**C**) 9-18 23-14 10-17 21-14(**D**) 4-8 26-23(**E**) 16-19 24-15(**F**) 11-18 28-24 6-9(**G**) 24-19 1-6 31-26 6-10 26-22(**H**) 10-26 23-14 9-18 30-14 2-6 25-22 8-11 27-23 6-9 22-18 7-10 14-7 3-10 32-27 9-14 18-9 5-14 27-24 draw

**A** – 8-11 29-25 12-16 = same.

**B** – Relatively rare, but may transpose into better-known lines.

**C** – 24-20 draw PP.

**D** – = 11-15 22-18 15-22 25-18 12-16 18-14 9-18 23-14 10-17 21-14 8-11 29-25.

**E** – 24-19 draw PP.

**F** – 23-16 draws in Kear's Encyclopedia, p.157 note T.

**G** – 6-10 draw, E. Rolader – J. Webster, 1978 U.S. Nat.

**H** – Just a trade.

**Jack Francis – Clayton Nash, round 7 game 1**

11-15 22-18 15-22 25-18 12-16 29-25 9-13 18-14 10-17 21-14 16-20 23-18 8-11(**A**) 24-19 4-8 27-23 6-9(**B**) 25-21 1-6?(**C**) 19-15 13-17 23-19 9-13 32-27!!(**D**) 17-22(**E**) 26-17 13-22 21-17 7-10 14-7 3-10 17-13 22-25 30-21 10-14 18-9 11-18 19-16 5-14 16-12 8-11 12-8 18-22 8-3 6-10(**F**) 31-26 22-31 3-8 31-24 8-6 2-9 28-19 WW

**A** – 6-10 draw PP.

**B** – 8-12 draw, in Pask's Key Openings.

**C** – 8-12 or others may draw.

**D** – 31-27? was played in J. Francis – M. Holmes in round 5, This improvement can be found quickly

with or without the help of a computer, but the subsequent WW is impressive, and may have been the result of much preparation.

**E** – Others lose.

**F** – 22-25 3-7 11-16 7-11-8-12 WW.

**Clayton Nash – Jack Francis, round 7 game 2**

11-15 23-18 8-11 18-14(**A**) 9-18 24-19 15-24 22-8 4-11 27-20(**B**) 10-15(**C**) 28-24 5-9(**D**) 21-17 6-10 25-21 9-14(**E**) 29-25 12-16(**F**) 26-23 3-8 32-28 8-12 25-22 16-19 23-16 12-19 17-13(**G**) 14-18(**H**) 22-17 18-23 31-26 23-27 26-23 19-26 30-23 11-16!(**I**) 20-11 7-16 24-20(**J**) 15-19 20-11 19-26 17-14 10-17 21-14 draw

**A** – Waterloo, relatively weak.

**B** – 28-19 is somewhat more popular.

**C** – About as strong as 5-9 draw PP, as in J. Webster – J. Francis, 1995 GAYP Nat. and J. Webster – J. Francis, 2003 GAYP Nat.

**D** – 11-16 should probably draw, J. Webster – J. Francis, 2003 GAYP Nat.

**E** – 11-16! 20-11 7-16 24-20 (29-25 9-14 24-20

16-19 = same) 16-19 29-25 9-14 Red strong?

**F** – 15-18 should also draw, and is from a game in Boland's Masterpieces p.72.

**G** – Or 31-27 14-18 27-23! draw.

**H** – Or 19-23 draw.

**I** – Sets a trap.

**J** – 24-19? loses!

**Joe Schwartz – Tim Lavery, round 7 game 1**

11-15 22-18 15-22 25-18 12-16 29-25 16-20(A) 18-15(B) 10-19 24-15 9-14 26-22(C) 7-10 23-19(D) 5-9 27-23 8-12 30-26?(E) 4-8 32-27 9-13 22-18 1-5 18-9 5-14 19-16 10-19 25-22 6-9 22-17 13-22 26-10 19-26 31-22 12-19 RW

A – 9-13 draw PP.

B – Rare.

C – 23-19 7-10 25-22 should probably draw, D.

Brattin – T. Gabbard, 1982 Lakeside.

D – 30-26 may be easier.

E – 22-18 4-8 32-27 12-16 may draw?

**Tim Lavery – Joe Schwartz, round 7 game 2**

11-15 23-18 10-14 18-11 8-15 26-23 6-10 22-17 4-8 23-19 1-6(A) 27-23(B) 8-11(C) 32-27(D) 9-13 30-26 13-22 25-9 5-14 29-25 6-9 25-22 9-13(E) 24-20?(F) 15-24 28-19 11-15(G) 20-16 15-24 27-20 12-19 23-16 10-15(H) 26-23 15-18 22-15 7-11 15-8 3-26 31-22 2-7 20-16 7-10 16-11 10-15 11-7 14-18 RW

A – A favorite of Lavery's. 8-11 draw PP.

B – 17-13 draw, T. Lavery – A. Bishop, 1987 GAYP Nat., or 25-22 draw, T. Lavery – R. Jones, 1988 Florida Open, or 30-26 draw, T. Lavery – R. Bailey, 1987 GAYP Nat., or 24-20 draw, T. Lavery – G. Lindsay, 2000 U.S. Nat.

C – 7-11 draw, K. Albrecht – E. Bruch, 1972 U.S. Nat.

D – 30-26 9-13 32-27 = same.

E – = 11-15 24-19 15-24 27-20 9-14 22-18 5-9

25-22 8-11 28-24 3-8 32-28 11-15 18-11 8-15 24-19 15-24 28-19 4-8 22-18 8-11 29-25 1-5 25-22 C.R. in Lees' Guide. 2-6 draw, T. Lavery – M. Barker, 1988 U.S. Nat.

F – 22-17 should draw, C.R., W. Reid – W. K. Campbell, 1881 match g.11 and in Lees' Guide.

G – 14-17 RW, G. Buckby – J. Grant, 1994 British Open from 9-13 24-20 11-15 22-17.

H – 14-17 draw, E. Thacker – R. Munzinger, 1956 U.S. Nat. from 9-13 23-19 5-9.

**Ed Bruch – Michael Holmes, round 7 game 1**

11-15 22-18 15-22 25-18 8-11 24-19 10-15(A) 19-10 6-22 26-17 11-15 17-13(B) 9-14(C) 29-25 4-8 25-22 15-19 23-16 12-19 22-17 2-6 17-10 6-15 31-26 1-6 26-22?(D) 8-12 27-24 7-10 22-17 15-18 24-15 10-19 30-25(E) draw?(F)

A - Rare.

B - 28-24 draw, Wilson – J. Wyllie, Robertson's Guide, p.269 v.31.

C - 1-6 draw, W. Craig – J. P. Reed, 1896 match g.22.

D - 27-23 draw.

E - Others lose.

F - He offered a draw and I accepted, but this is a nice win for red, which he did not see -- Holmes. continue 12-16 17-14 16-20 21-17 18-22!! 25-18 20-24 (19-23? draws) 18-15 3-7 RW.

**Sune Thrane – Jim Morrison, round 7 game 1**

11-15 22-18 15-22 25-18 12-16 29-25 8-11 26-22(A) 16-20 24-19 9-14(B) 18-9 5-14 22-18 10-15?(C) 18-9 15-24 28-19 6-13 25-22 4-8 23-18 8-12 19-15 3-8(D) 30-26?(E) 1-6?(F) 21-17 12-16 17-14 16-19 27-23 19-24 23-19 24-28 31-27 8-12 15-8 6-10 8-3 10-17 3-10 17-21 18-15 21-25 15-11 25-29 26-23 29-25 10-15 25-18 15-22 2-6 23-18 6-9 11-7 WW

A – 24-20 draw PP.

B – 4-8 may be stronger, R. D. Yates – A. R. Davis, 1877, Yates Checker Player.

C – Tempting, but this seems to lose. 1-5 or others

draw.

D – 11-16 may also lose.

E – 27-23 WW?

F – 12-16 and 2-6 draw.

**Jim Morrison – Sune Thrane, round 7 game 2**

11-15 22-18 15-22 25-18 9-13(A) 24-19(B) 8-11 26-22 11-16 31-26?(C) 5-9 28-24 16-20 29-25(D) 10-14 32-28(E) 7-10 18-15 4-8 22-18(F) 2-7 25-22 7-11 21-17 14-21 19-16 12-19 23-7 10-19 24-15 3-19 18-15 9-14 27-23 8-12 23-16 12-19 15-11 6-9 11-7 1-5 7-2 21-25 30-21 14-17 21-14 9-25 RW

**A** – Not weak, and can transpose into well-known lines.

**B** – = 9-13 24-19 11-15 22-18 15-22 25-18; 29-25 draw PP.

**C** – Seems to lose. 29-25 draw PP.

**D** – Others lose. This transposes into a published

loss that Morrison has probably seen before: = 11-15 22-18 15-22 25-18 12-16 29-25 9-13 24-19

8-12 28-24 16-20 26-22 5-9 31-26 RW in Kear's.

**E** – 18-15 7-10 32-28 = same.

**F** – 19-16 RW, Kear's Encyclopedia p.152 note V.

**Richard Beckwith – Lubabalo Kondlo, round 7 game 1**

11-15 23-19 8-11 22-17 4-8(A) 25-22(B) 9-13 27-23 6-9 23-18 9-14 18-9 5-14 26-23 1-6 30-25 15-18 22-15 11-27 32-23 13-22 25-9 6-13 29-25 13-17 21-14 10-17 19-16 12-26 31-13 8-12(C) 24-19(D) draw

**A** – Old 14<sup>th</sup>.

**B** – 17-13 is slightly more popular.

**C** – 8-11 draw PP.

**D** – 13-9 draw, S. Gonotsky – J. Campbell, 1927 IM, or 25-22 draw, M. Tinsley – N. Banks, 1952 match g.15.

**Lubabalo Kondlo – Richard Beckwith, round 7 game 2**

11-15 23-18 8-11 27-23 10-14 22-17(A) 15-22 17-10 6-15 26-17 11-16 24-19 15-24 28-19 7-10 17-13 9-14 25-22 4-8 22-18 8-11 18-9 5-14 29-25 3-7 13-9 16-20 30-26 11-16(B) 25-22 1-5(C) 22-18 20-24 26-22 16-20 22-17 7-11?(D) 17-13?(E) 24-27 31-24 20-27 9-6 2-9 13-6 27-31 18-9 5-14 6-1 31-26 1-6 11-15 32-28 15-24 28-19 draw

**A** – 23-19 draw PP. See L. Kondlo – J. Morrison in round 1.

**B** – 20-24 draw PP.

**C** – Or 20-24 draw, as Kondlo played in the next

round.

**D** – 24-27 draw.

**E** – 9-6! WW.

**Richard Beckwith – Lubabalo Kondlo, round 8 game 1**

11-15 23-19 8-11 22-17 11-16(A) 24-20 16-23 27-11 7-16 20-11 3-7 28-24 7-16 24-20 16-19 25-22 4-8 29-25 19-24 17-14 9-18 22-15 10-19 32-28 6-10 25-22 8-11(B) 22-18 10-15(C) 26-23 15-22 23-7 2-11 28-19 1-6 21-17 6-10 17-13 11-15 30-26 draw(D)

**A** – Glasgow.

**B** – Or 5-9 draw PP.

**C** – Or 10-14 draw PP.

**D** – B. Woolhouse in Kear's Encyclopedia, p.171 v.9, and M. C. Priest – R. D. Yates, 1875 in Yates Checker Player, and many games since.

**Lubabalo Kondlo – Richard Beckwith, round 8 game 2**

11-15 23-18 8-11 27-23 10-14 22-17 15-22 17-10 6-15 26-17 11-16 24-19 15-24 28-19 7-10 17-13 9-14 25-22 4-8 22-18 8-11 18-9 5-14 29-25 3-7 13-9 16-20 30-26 11-16 25-22 20-24(A) 9-5 16-20 19-16 12-19 23-16 7-11 16-7 2-11 26-23 11-15 23-19 24-27 32-23 15-24 22-18 24-27 18-9 10-15 31-24 20-27 draw

**A** – Varies from Kondlo's 1-5 in the previous round.

**Clayton Nash – Tim Lavery – round 8 game 1**

11-15 22-18 15-22 25-18 8-11 24-19 9-13 26-22 11-16 29-25 4-8(**A**) 31-26 8-11(**B**) 18-14 10-17 21-14 16-20  
22-18 6-10(**C**) 25-21 10-17 21-14 13-17 19-15 11-16 15-11 16-19 23-16 12-19 27-24 7-16 24-15 1-6  
15-11(**D**) 6-9 18-15?(**E**) 9-18 26-22 18-25 30-14 16-19 32-27 2-6?(**F**) 14-10 6-9 10-6 9-14 6-1 14-18 1-6  
19-23 draw

**A** – 16-20 draw PP.

match g.21.

**B** – 5-9 should draw, L. Taylor – W. Fraser, 1962  
U.S. Nat.

**D** – Or 32-27 draw.

**E** – 32-27 draw.

**C** – 11-16 should draw, H. Coltherd – J. Way, 1858

**F** – 3-7 RW.

**Joe Schwartz – Sune Thrane, round 8 game 2**

11-15 22-18 15-22 25-18 12-16 18-14 9-18 23-14 10-17 21-14 16-20 24-19?(**A**) 6-10 29-25 10-17 25-21 1-6  
21-14 6-10 30-25 10-17 25-21 2-6 21-14 6-10 14-9 5-14 26-22 8-11 31-26(**B**) 4-8 27-23 11-15 19-16 8-12  
23-19 15-24 28-19 20-24 32-28 24-27 28-24 RW

**A** – Loses the piece, just as R. Martins did. 29-25  
draw PP.

**B** – 27-23 RW, J. McKerrow – R. Martins, 1859  
match.

Jim Loy's comment: I would like to thank the players who turned in accurate and readable scoresheets:  
Clayton Nash, Jim Morrison, Richard Beckwith, and Tim Lavery.



## 2007 WCDF World Qualifier Tournament – Women

2007/9/17-2007/9/21

|     |                 |     |              |      |         |
|-----|-----------------|-----|--------------|------|---------|
| 1   | Jan Mortimer    | NZ  | New Zealand  | 2150 | 20      |
| 2-3 | Kim Willis      | ACF | Eldon        | MO   | 1716 14 |
| 2-3 | Wilma Wolverton | ACF | Grain Valley | MO   | 1832 14 |

Each player played six games against each opponent. Each round consisted of two games.

### Kim Willis – Wilma Wolverton, round 1 game 2

11-15 24-19 15-24(A) 28-19 8-11 22-18 9-14(B) 18-9 5-14 25-22 11-15 19-16(C) 12-19 23-16 4-8(D) 16-12(E) 8-11 22-17 15-18 26-23 11-16(F) 32-28(G) 16-20 17-13 18-22 23-19 22-25?(H) 29-22 14-17 21-14 10-26 31-22 6-10 19-16 10-15 30-26(I) 15-19 22-17(J) 1-5(K) 26-22?(L) 2-6 22-18 19-23 18-15 23-32 15-11 7-10 11-7(M) 10-15 16-11 3-10 11-7 15-18 12-8 18-22 8-3 draw(N)

A – 2nd Double Corner.

B – 11-16 draw PP.

C – Rare. 32-28 draw PP.

D – 15-19 draw, H. Richards – M. Polonsky, 1929 Chicago Nat.

E – Easier is 21-17 14-21 30-25 draw.

F – Or 18-22 Red strong.

G – 17-13 10-15 29-25 may draw?

H – 14-18!! (14-17 is also strong) 30-26 (19-16 10-15 21-17 15-19 RW) 18-23!! RW.

I – 27-23 probably draws.

J – 22-18? 3-8! RW.

K – An interesting position. Just how can White, who is a piece ahead, survive?

L – Not that way. 17-14! 2-6 (7-11 draws) 27-23 20-24 26-22 or 23-18 draw.

M – Loses a piece, but 11-8 also loses.

N – The rest of this game is scrambled. It is a RW so far.

### Kim Willis – Jan Mortimer, round 2 game 1

11-15 22-17 15-19(A) 24-15 10-19 23-16 12-19 25-22 9-13(B) 29-25(C) 8-11 17-14 4-8(D) 22-18 8-12(E) 27-24 11-16?(F) 24-15 16-19(G) 32-27 6-9 27-24 1-6 25-22 7-10 14-7 3-10 15-11 12-16 24-15 10-19 18-15 16-20 21-17 WW

A – Dyke.

B – 8-11 draw PP.

C – 17-14 draw PP.

D – Or 11-15 draw.

E – = 11-16 22-18 8-11 25-22 4-8 22-17 16-19 24-15 10-19 23-16 12-19 17-14 8-12 29-25 9-13.

F – 19-23 26-19 11-15 draw, R. Stewart – N. Banks, 1922 WCM g.13, shown in Kear's Encyclopedia, also W. Kilgour – A. Long, 1927 IM.

G – 7-10 lost, T. Jones – A. Cameron, 1946 ACA Nat.

### Jan Mortimer – Kim Willis, round 2 game 2

11-15 23-19 7-11(A) 22-17(B) 11-16 24-20?(C) 15-24 20-11 8-15 27-20 15-19 25-22 4-8 29-25?(D) 9-14 22-18(E) 14-23 17-14 10-17 21-14 8-11(F) 31-27 3-7 27-18 19-23 26-19 11-16 20-11 7-23 25-22 6-9 14-10 9-14 18-9 5-14 28-24 12-16 24-19 16-20 19-15 20-24 15-11 24-27 10-7 27-31 7-3 31-26 22-18 1-6?(G) 18-9 6-13 11-8?(H) 2-6?(I) 3-7 13-17 8-3 17-21 3-8 6-9 7-10 26-22 8-11 22-26 11-15 9-13 10-14?(J) 21-25 30-21 23-27 32-23 draw

A – = 10-15 23-19 7-10.

B – 22-18 is somewhat more popular.

C – Weak and perhaps never played before. 26-23 draw PP, perhaps to Whilter or Alma.

D – May be the loser. 17-13 or others may draw.

E – Others may lose.

F – 3-7 31-27 6-10 27-18 10-17 25-21 1-6 RW.

G – 1-5 18-9 5-14 3-7 2-6\* 7-2 6-9\* 2-6 9-13\* 6-9 14-17\* 9-14 17-21\* 11-7 26-31\* 7-2 31-27\* 2-6 13-17\* draw.

**H** – 3-7\* WW.

**J** – 15-18 WW or 15-19 WW.

**I** – 26-22\* 8-4 22-18\* 4-8 18-15\* draw.

**Jan Mortimer – Wilma Wolverton, round 3 game 1**

11-15 23-18 9-14(**A**) 18-9 5-14 27-23(**B**) 15-19 24-15 10-19 23-16 12-19 22-17 7-10 25-22(**C**) 8-11 17-13 4-8 29-25 8-12 31-27 11-15(**D**) 22-17 3-7 27-24(**E**) 7-11 25-22 14-18?(**F**) 26-23 18-25 23-7 2-11 17-14 10-17 21-14 25-29 14-10 11-16 10-7 15-19 24-15 6-9 13-6 1-19 32-27 19-23 27-18 16-19 7-3 12-16 3-8 19-23 8-11 16-20 11-16 23-27 16-19 27-31 18-14 20-24 19-23 WW

**A** – Cross Choice.

**D** – Or 10-15 Red strong.

**B** – 22-17 draw PP.

**E** – May be the only draw.

**C** – 32-27 draw, K. Grover – E. Frazier, 1966 U.S. Nat.

**F** – 19-23 (or 12-16 24-20 14-18 draw) 26-19 11-16 draw.

**Wilma Wolverton – Jan Mortimer, round 3 game 2**

11-15 22-17 8-11 17-13 15-18(**A**) 23-14 9-18 21-17(**B**) 5-9?(**C**) 17-14 10-17 26-22 17-26 30-5 12-16 27-23 4-8 24-20?(**D**) 8-12?(**E**) 28-24 7-10 32-28 10-14 25-22 3-7 29-25?(**F**) 6-10?(**G**) 25-21 11-15 20-11 7-16 24-19 15-24 28-19 2-7 22-18 14-17 21-14 10-17 19-15 16-19 23-16 12-19 18-14 19-24 15-10 7-11 WW

**A** – Maid of the Mill.

**E** – 16-19 23-16 8-12 draw.

**B** – Or 26-23 draw PP.

**F** – 22-18 WW.

**C** – 10-15 draw PP.

**G** – 11-15 draws.

**D** – 32-27 seems to win.

**Wilma Wolverton – Kim Willis, round 4 game 1**

11-15 23-19 8-11 22-17 4-8(**A**) 25-22(**B**) 9-13 27-23 6-9 23-18 9-14 18-9 5-14 24-20?(**C**) 15-24 28-19 11-15 32-28 15-24 28-19 8-11 26-23 11-15 22-18 15-24 18-9 13-22 30-26 1-6 26-17 6-22 23-18 24-28 21-17 28-32 18-14 2-6 RW

**A** – Old 14<sup>th</sup>.

**C** – This loses. 26-23 draw PP.

**B** – Or 17-13 draw PP.

**Kim Willis – Wilma Wolverton, round 4 game 2**

11-15 23-18 8-11(**A**) 27-23 10-14 22-17(**B**) 15-22 17-10 6-15 26-17 4-8(**C**) 17-13(**D**) 9-14 23-19 14-18(**E**) 19-10 7-14 31-27?(**F**) 11-15 24-20 8-11 30-26 12-16(**G**) 26-22 2-7 27-24 16-19?(**H**) 22-17?(**I**) 18-23 17-10 7-14 25-22 23-26 22-17 14-18 20-16 11-27 32-14 26-31 14-10 31-26 17-14 26-23 21-17 3-8?(**J**) 10-6 1-10 14-7 15-18 7-3 8-12 17-14 18-22 14-10 22-26 10-7 26-30 7-2 draw

**A** – Cross.

match g.30.

**B** – 23-19 draw PP.

**G** – 1-6 RW, may be easier.

**C** – 11-16 draw PP.

**H** – 1-6 RW.

**D** – 32-27 draw PP.

**I** – 13-9! 19-23 9-6! 1-10 24-19 White strong.

**E** – Or 15-18 draw.

**J** – 19-24 28-19 15-24 RW.

**F** – 30-26 draw, T. Wiswell – M. Hopper, 1951

**Kim Willis – Jan Mortimer, round 5 game 1**

11-15 22-17 8-11 25-22(**A**) 9-14(**B**) 29-25(**C**) 5-9(**D**) 17-13 4-8?(**E**) 24-20?(**F**) 15-19(**G**) 23-16 12-19 22-17 11-15 27-23 8-12 23-16 12-19 20-16(**H**) 1-5(**I**) 32-27 14-18 16-12 9-14 26-22?(**J**) 5-9 30-26 7-11 28-24 19-28 27-24 18-23 26-19 11-16 22-18(**K**) 16-23?(**L**) 18-11 28-32 24-19 14-18?(**M**) 17-14 10-17 21-5 6-10 5-1 10-14 11-8 draw(**N**)

**A** – 17-13 draw PP.  
**B** – 9-13 draw PP.  
**C** – 17-13 draw PP.  
**D** – 11-16 draw PP.  
**E** – 11-16 should draw, L. Hall – V. Monteiro, 1966 U.S. Nat. from 9-14 22-17 5-9.  
**F** – 23-19 WW?, A. Battersby – H. Freedman, 1898 match g.1 from 9-14 22-17 11-15.  
**G** – 1-5 draw, K. Lovell – W. Edwards, 1993 English Open.  
**H** – 26-23 seems to be easier.

**I** – Or 15-18 Red strong.  
**J** – 26-23 draw, H. Henderson – J. Burns, 1905 Scottish Ty. from 11-15 24-20 15-19 and C. Nash – J. Francis, 2005 GAYP Nat. from 11-15 24-20 8-11.  
**K** – A good bluff.  
**L** – 14-23 RW or 15-29 RW.  
**M** – 3-7! saves the piece. A possible continuation: 12-8 7-16 19-12 32-28 draw.  
**N** – The rest of this game is scrambled. White seems to be winning.

#### **Jan Mortimer – Kim Willis, round 5 game 2**

11-15 23-19 7-11 21-17 11-16(**A**) 17-13(**B**) 16-23 27-11 8-15 22-18 15-22 25-18 4-8 18-15?(**C**) 10-19 24-15 9-14 32-27 3-7?(**D**) 29-25?(**E**) 7-10 25-22(**F**) RW(**G**)

**A** – May be better than 9-13 draw PP. Nemesis' opening book recommends 9-14 draw.  
**B** – As good as 27-23 draw, V. Dowsey – I. Hinson, 1989 I-D.  
**C** – 29-25 or others draw.

**D** – 2-7 RW.  
**E** – 13-9 6-13 15-10 draw?  
**F** – 27-24 also loses.  
**G** – The rest of this game is scrambled.

#### **Wilma Wolverton – Jan Mortimer, round 6 game 1**

11-15 22-17 8-11 17-14(**A**) 10-17 21-14 9-18 23-14 12-16 25-22 6-9(**B**) 29-25 9-18 26-23(**C**) 16-20(**D**) 23-14 2-6 24-19 15-24 28-19 4-8?(**E**) 22-18 6-9 25-21 1-6 30-26?(**F**) 7-10?(**G**) 14-7 3-10 18-15 11-18 27-24 WW

**A** – White Dyke.  
**B** – 4-8 draw PP.  
**C** – Maybe better is 24-19, which should draw, A. Bishop – L. Balderson, 1987 GAYP Nat.  
**D** – Or 4-8 23-14 then 1-6 or 8-12 or 16-19 or some

combination of these.  
**E** – 6-10 draw, W. Stewart – J. Schwartz, 1984 U.S. Nat. from 12-16 22-17 16-20.  
**F** – 31-26 WW.  
**G** – 9-13 may draw.

#### **Jan Mortimer – Wilma Wolverton, round 6 game 2**

11-15 23-19 7-11 27-23 11-16(**A**) 23-18(**B**) 16-23 18-11 8-15 26-19 4-8 22-18(**C**) 15-22 25-18 9-14 18-9 5-14 29-25 8-11 25-22 11-15 24-20 15-24 28-19 10-15 19-10 6-15 22-17?(**D**) 14-18 17-14 18-22 21-17 3-7 17-13 15-19 32-28 19-23 28-24 23-27 24-19 27-32 14-9 7-11 9-5 32-28 30-26 22-25 26-23 28-24 RW(**E**)

**A** – 9-14 draw PP.  
**B** – 22-18 draw PP.  
**C** – 32-27 draw C.R., E. Lowder – J. Francis, 1996 U.S. Nat. from 9-13 22-18 6-9. J. Childers' annotations to that game imply that White (Red in

our game here) is already winning, but I have some doubts about that.  
**D** – 32-27 seems to draw.  
**E** – The best game of the Women's Tournament.