

Barbados WQT 2004

Games of the WCDF 3-Move World Qualifying Tournament

Annotated by Jim Loy

Abbreviations ACFB = American Checker Federation Bulletin, CR = colors reversed, IM = International Match, PP = published play, RW = Red won or Red wins (the colors are Red (Black) and White), ty. = tournament, WCM = World Championship Match, WW = White won or White wins

R. Allicock – C. Nash

9-13 24-19 10-14 22-18 5-9(A) 25-22 11-16?(B) 29-25?(C) 8-11 18-15 11-18 22-15 1-5 28-24 14-18
23-14 9-18 15-10?(D) 7-14 26-22 16-23 22-15 14-17?(E) 21-14 2-7 27-18 7-10 14-7 3-28 18-14?(F)
4-8 25-22 8-11 31-26 12-16 26-23 6-9 14-10 9-14 10-7 11-15 7-3 15-19 3-8 19-26 30-23 16-20 8-11
20-24 23-19 24-27?(G) 32-23 28-32 19-16 32-27 22-18 14-17 23-19 17-22 18-15 22-26 16-12 27-24
19-16 26-30 15-10 draw

A – 6-10 draw PP.

B – 6-10 draw PP.

C – 28-24 WW, J. Jackson – J. Young, Shearer's Mail Ty. 1907. 18-15 may also win.

D – 24-20 draw, KingsRow.

E – 6-9 27-18 14-23 31-27 13-17! RW.

F – 18-15 4-8 25-21 12-16 30-26 16-19 31-27 5-9 26-22 9-14 22-18 draw.

G – 14-17 RW.

C. Nash – R. Allicock

9-13 24-19 10-14 22-17 13-22 25-9 5-14 29-25 6-10(A) 25-22(B) 11-15 28-24 7-11 22-17 11-16
17-13 2-6(C) 24-20(D) 15-24 20-11 8-15 27-20 4-8 20-16 12-19 23-16 15-19 26-22 10-15 22-17
15-18 17-10 6-15 16-11 8-12 21-17 12-16 17-14 18-23?(E) 14-10 19-24 11-7 24-27 31-24 16-20 7-2
20-27 2-7 27-31 7-11 15-19 11-16 19-24 16-20?(F) 23-27* 32-23 31-27 13-9 27-18 20-27 18-14 9-6
14-7 6-2 7-11 30-26 3-8 27-24 8-12 24-19 11-16 19-15 16-20* 26-23 20-24 23-19 24-20 15-18
20-24 19-15 12-16 2-7 16-19 draw

A – 7-10 draw, F. Burgess – F. Carter, 1984 British Open.

B – 28-24 = 10-14 24-19 6-10 22-17 9-13 28-24 13-22 25-9 5-14 29-25.

C – 3-7 draw, R. Holmes – R. Stewart 1901 Scottish Ty., *Kear's Encyclopedia* p.309 v.24, where the players' names are reversed.

D – 26-22 16-20* 23-18 14-23 27-11 and both jumps draw.

E – 19-23 14-10 18-22 draw.

F – May have looked like a win. 13-9 WW.

D. Harwood – M. Holmes

11-15 24-20 12-16 20-11 7-16 22-18 15-22 25-18 8-11 29-25 10-15(A) 25-22 6-10(B) 27-24 16-20
24-19 15-24 28-19 2-7 19-15(C) 10-19 23-16 4-8 22-17 9-13 16-12* 13-22 26-17 11-16 18-14
1-6(D) 30-26 16-19 17-13 8-11* 26-22 11-16 22-17 6-10 13-9 10-15 9-6 7-11 6-2 15-18 14-9 5-14
17-10 19-24(E) 2-6 11-15 6-2 16-19?(F) 2-7 19-23 7-11 24-27 31-24 20-27 10-6 27-31 6-1 31-27
1-6 27-24 6-10 24-19 21-17 23-26 WW

A – 4-8 draw PP.

B – 4-8 draw PP.

C – 22-17 draw PP.

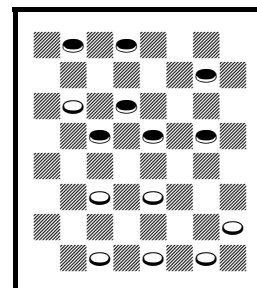
D – 16-19 draw, may be better.

E – 19-23 may be easier.

F – 18-23* 2-7 15-18* 7-11 18-22* draw, but White is still strong with two kings vs. two kings.

M. Holmes – D. Harwood

11-15 24-20 12-16 20-11 7-16 22-18 15-22 25-18 8-11 29-25 4-8 25-22
10-15(A) 23-19(B) 16-23 26-10 6-15 21-17 3-7 27-23 7-10 17-13* 9-14?(C)
18-9 5-14 13-9 11-16 {diagram} 9-5?(D) 8-12 31-27 16-19 23-16 12-19
27-23 19-26 30-23 2-6 23-19 15-24 28-19 10-15 RW



White wins

A – 8-12 draw PP.

B – 21-17 draw PP.

C – 8-12 or others draw.

D – See the diagram. 28-24! 8-12 (16-20 31-27 WW) 24-20 WW.

D. Cadogan – J. Walrond

12-16 24-20 8-12 27-24(A) 3-8 23-18(B) 9-13 18-14(C) 10-17 21-14 6-10 25-21 10-17 21-14 16-19
24-15 11-25 29-22?(D) 1-6 30-25 12-16?(E) 20-11 8-15 25-21 6-9 14-10 7-14 22-17 13-22 26-10
9-14 draw

A – 28-24 draw PP.

B – 23-19 draw PP.

C – 18-15 draw, KingsRow.

D – 30-21 draw, KingsRow.

E – 6-10 25-21 10-17 21-14 2-6 32-27 6-9 22-18 7-11 RW.

J. Walrond – D. Cadogan

12-16 24-20 8-12 28-24 3-8 22-18 16-19(A) 24-15 10-19 23-16 12-19 27-23(B) 8-12(C) 23-16 12-19
21-17 6-10 25-21 9-14 18-9 5-14 29-25 4-8 25-22 8-12 17-13 1-6(D) 22-17 11-15(E) 26-23 19-26
30-23 7-11 32-28 15-18 23-19 18-22 20-16 11-20 19-15 10-19 17-1 draw

A – 9-14 draw PP.

B – 25-22 draw PP.

C – 11-15 draw PP.

D – 2-6 draw CR, *Kear's Encyclopedia* p.211 v.4 from 10-15 22-17 11-16 CR.

E – Or 19-24 30-25 11-15 26-23* draw.

H. Devlin – C. Farley

12-16 22-17 16-20 17-13(A) 11-15 25-22 8-11 29-25(B) 4-8 24-19 15-24 28-19 11-15 19-16* 8-12 22-17 12-19 23-16 15-19!(C) 25-22 19-24?!(D) 26-23 (22-18 White strong) 24-28? (10-15 23-19 9-14! draw) 23-18 7-11 (or 10-14 17-10 7-23 27-18 9-14 16-11 WW, J. McPherson – F. McGowan, 1924 Glasgow Ty.) 16-7 2-11 31-26 10-15 30-25 3-8 27-23 20-24 23-19 6-10 13-6 8-12 17-14 10-17 19-10 WW

A – 17-14 draw PP.

B – 23-18 draw, KingsRow.

C – Leads to the 9-14 transposition in the next note. 9-14 draw, *Robertson's Guide* p.124 v.69.

D – I would call this a mistake, although it draws. 10-15 seems to be the popular move. But 9-14! = 12-16 22-17 16-20 25-22 11-15 29-25 9-14 17-13 8-11 24-19 15-24 28-19 4-8 22-17 11-15 19-16 8-12 25-22 12-19 23-16 15-19 in *Kear's Encyclopedia* p.30 v.23, then 30-25! draw, KingsRow, as the published 27-23? seems to lose, J. Loy, ACFB #356 p.10, my correction of KE p.30G.

C. Farley – H. Devlin

12-16 22-17 16-20 17-13 11-15 25-22 8-11 29-25 4-8 24-19 15-24 28-19 8-12(A) 19-16 12-19 23-16 9-14 22-17 11-15 26-23 5-9 30-26 7-11 16-7 2-11 26-22 3-8 23-18 14-23 27-18 15-19 31-26 19-23 26-19 10-14 17-10 6-24 13-6 1-10(B) 21-17 10-15 17-14 15-19 14-10 11-16 draw

A – Varies from the preceding game.

B – Draw, W. K. Campbell – D. McKelvie, 1902 Scottish Ty. and *Reisman's Pioneer* v.56B.

M. Barker – T. Fergusson

9-13 23-19 11-16 26-23 16-20(A) 30-26 8-11 19-16 12-19 24-8 4-11 23-19 6-9 27-23 9-14 32-27(B) 1-6 22-17 13-22 25-9 5-14 26-22 11-15(C) 29-25 15-24 28-19 7-11 22-18* 3-7 18-9 6-13 19-16 11-15 16-12 13-17 21-14 10-17 25-21 17-22 12-8 7-11* 8-3 11-16 draw

A – 10-14 draw PP.

B – 22-17 = 9-14 23-19 11-16 26-23 16-20 30-26 8-11 19-16 12-19 24-8 4-11 23-19 6-9 22-17 9-13 27-23 in *Kear's*.

C – 3-8 draw, J. Alexander – G. Buchanan, *Kear's Encyclopedia* p.360 v.3.

T. Fergusson – M. Barker

9-13 23-19 11-16 26-23 16-20 30-26 8-11 19-16 12-19 24-8 4-11 23-19 5-9(A) 27-23 9-14 22-17 13-22 25-9 6-13 29-25 11-15(B) 19-16(C) 13-17 21-14 10-17 25-21 1-6 21-14 7-11 16-7 3-17 26-22 17-26 31-22 6-10 23-19 15-24 28-19 draw(D)

A – Varies from the preceding game.

B – 10-14 draw, W. Gardner – S. Grover, 1905 IM and *Kear's Encyclopedia* p.359.

C – 25-22 draw, J. Roberts – W. Blakely, *Master Play* p.134 v.3E.

D – H. Owen – G. Bailey, 1968 National from 9-14 23-19 11-16.

R. King – R. Grazette

10-14 24-19 7-10 28-24 11-15?(A) 22-18 15-22 25-18 9-13?(B) 18-9 5-14 24-20?(C) 8-11(D) 19-16(E) 12-19 23-7 2-11 29-25 4-8(F) 25-22(G) 14-18 22-15 11-18 20-16 18-22 26-17 13-22 21-17* 6-9 17-13 1-6 27-23 10-14 32-27 14-17* 23-18 8-12 16-11 12-16* 27-24 17-21 24-20 16-19* 20-16 22-25 16-12 25-29 18-15 9-14 12-8 3-12 11-7* 14-18 7-2 18-23 2-9 23-27 31-24 19-28 draw

A – "Questionable," *Basic Checkers*. 11-16 draw PP.

B – 8-11 White strong, PP, and a WW in *Basic Checkers*.

C – 29-25! 1-5 (8-11 25-22 WW KingsRow) WW, KingsRow. Continue 25-22 6-9 (8-11 WW) 24-20 8-11 19-16 12-19 23-7 2-11 27-23 3-7 22-18 WW.

D – 3-7 WW, B. Lucas – C. McKenna, 1996 British Open.

E – 29-25 White strong, KingsRow.

F – 10-15 draw, S. Boyko – H. Devlin, 2008 World Mind Sports Games.

G – 27-23 should have drawn, K. Albrecht – D. Lafferty, 1978 National.

R. Grazette – R. King

10-14 24-19 7-10 28-24 11-16 22-17(A) 9-13 25-22 16-20 32-28(B) 8-11?(C) 19-16 12-19 23-7 2-11 24-19(D) 11-15(E) 19-16?(F) 15-18?(G) 22-15 13-22 26-17 10-19 17-10 6-15 16-11 1-6 21-17?(H) 5-9* 30-26 9-13?(I) 27-23 13-22 23-16 3-8 26-17 8-12 11-7 WW

A – 32-28 draw PP.

B – = 10-14 24-19 11-16 22-17 7-10 27-24 9-13 25-22 16-20 32-27 in *Kear's Encyclopedia*.

C – May or may not lose. 5-9 draw PP.

D – Or 26-23 WW PP, may be similar.

E – 4-8 26-23 11-15 30-26 15-24 28-19 5-9 19-16 WW?

F – 26-23 15-24 28-19 5-9 19-16 4-8 23-19 WW.

G – 4-8 16-11 8-12 27-23 (11-7? 5-9 RW) draw.

H – 30-26 6-10 11-7 WW.

I – 6-10 17-13 9-14 11-7 19-24* 7-2 10-15 2-6 24-28* draw.

C. Farley – D. Cadogan

11-15 21-17 8-11 25-21?(A) 9-13 23-18(B) 4-8 24-20?(C) 6-9?(D) 27-24 9-14(E) 18-9 5-14 26-23 1-6?(F) 30-25?(G) 15-18 22-15 11-27 32-23 13-22 25-9 6-13 23-18?(H) 13-17 21-14 10-17 18-14 2-6?(I) 31-26?(J) 17-21 26-22 8-11 22-18(K) 7-10 14-7 3-10 24-19 6-9 20-16 11-20 18-15 12-16 1-0

A – 17-13 draw PP.

B – 30-25 or 24-19 draw PP.

C – 27-23 draw, KingsRow.

D – 12-16 28-24 8-12 RW, H. Christie – A. Jordan, 1891 English Ty.

E – 12-16 draw, KingsRow.

F – 2-6* 24-19 15-24 28-19 6-9 draw.

G – 23-19! 12-16 19-12 14-18 24-19 WW?

H – 29-25 draw, KingsRow.

I – 17-22 14-9 8-11 9-5 12-16 RW.
J – 29-25! draw.
K – 22-17 12-16* RW.

D. Cadogan – C. Farley

11-15 21-17 8-11 17-13 11-16(A) 25-21 3-8(B) 24-19(C) 15-24 28-19 8-11 22-18 9-14 18-9 5-14
29-25 11-15 25-22 15-24 27-11 7-16 22-18 1-5 18-9 5-14 26-22 6-9(D) 13-6 2-9 31-27(E) 16-19*
23-16 12-19 22-18 14-23 27-18 19-23(F) 21-17 9-13 18-14 13-22 14-7 22-26 7-3 26-31 3-7 31-26
7-11 26-31 11-15 4-8 15-10 31-26 10-7 26-31 7-3 8-12 3-7 draw

A – 9-14 draw PP.

B – This may be new. But it looks OK, as the game has transposed into a soft variation of 11-16
21-17 7-11 17-13. 9-14 = 11-15 22-17 8-11 25-22 9-14 17-13 11-16.

C – = 11-16 21-17 7-11 17-13 3-7 24-19 11-15 25-21.

D – 16-19 draw, M. Tinsley – D. Oldbury, 1958 WCM g.4 from 11-16 22-17 7-11, and mentioned
in Case's *Three Move Checkers*, in 1952, as being published play.

E – 22-17 draw, KingsRow.

F – Draw, M. Long – R. Hayes, 1961 Davis Mail Ty. from 11-16 21-17 7-11. 10-14 draw, H. Freyer
– L. Cowie, 1971 Lakeside from 11-16 22-17 7-11.

T. Fergusson – R. Allicock

9-13 24-20 5-9 23-18(A) 10-15 21-17(B) 1-5 27-24?(C) 7-10 25-21 9-14 18-9 5-14 30-25 3-7?(D)
26-23 15-18 22-15 11-27 32-23 13-22 25-9 6-13 29-25 13-17 21-14 10-17 25-22 17-26 31-22 8-11
24-19 11-16 20-11 7-16 22-18 2-7 18-14 16-20 14-9 20-24 9-6 4-8?(E) 6-2 7-11 2-7 11-16 19-15
16-19 23-16 12-19 7-11 8-12 11-16 WW

A – 22-18 draw PP.

B – 28-24 draw PP.

C – 28-24 draw, *Basic Checkers*.

D – 12-16 32-27 8-12 27-23 3-7 22-18 13-22 RW.

E – 7-11 draws.

R. Allicock – T. Fergusson

9-13 24-20 5-9 23-18 10-15 28-24 12-16(A) 21-17 16-19(B) 17-14 19-28 14-5 8-12 18-14(C) 4-8
22-18?(D) 15-22 25-18 6-10 14-9 10-15 18-14 13-17?(E) 29-25(F) 15-18 27-24?(G) 11-15 26-22
17-26 31-22 18-23 25-21 1-6 5-1 6-13 14-9 7-11 RW

A – 1-5 draw PP.

B – 1-5 draw PP.

C – 25-21 White better, C. Crawford – J. Caldwell, 1966 National, also L. Balderson – R. Allicock,
1996 National.

D – 26-23 (14-9 6-10 draw) 15-19 Red better, R. Jordan – H. Reynolds, 1905 IM.

E – 15-18! 29-25 11-15 26-22 8-11 31-26 12-16 26-23 3-8 RW.

F – 27-23 15-18* 23-19 18-22* 30-25 11-16* draw.

G – 25-21 11-15 9-6! 2-9 20-16 12-19 26-23 19-26 31-6 draw.

H. Devlin – M. Barker

12-16 22-18 16-19 24-15 10-19 23-16 11-20 26-23(A) 6-10(B) 28-24 8-11 30-26 4-8 24-19 8-12
19-16(C) 12-19 23-16 1-6 25-22* 10-14 27-23* 6-10* 32-27 9-13 18-9 5-14 22-18* 14-17* 21-14
10-17 18-15 11-18 23-14 7-10 14-7 2-11 16-7 3-10 26-23 draw

A – 21-17 draw PP.

B – 8-11 draw PP.

C – 25-22 draw, KingsRow.

M. Barker – H. Devlin

12-16 22-18 16-19 24-15 10-19 23-16 11-20 25-22 8-11 29-25(A) 4-8 26-23(B) 7-10 23-19(C)
2-7(D) 31-26 9-13 18-14 10-17 21-14 6-10 25-21 10-17 21-14 1-6 27-24 20-27 32-23 6-10 30-25
10-17 25-21 11-15 21-14 15-24 28-19 7-11 22-18 13-17 14-10 17-21 10-7 3-10 19-15 10-19 23-7
21-25 26-22 25-30 22-17 30-26 draw

A – 22-17 draw PP.

B – 28-24 draw PP.

C – 28-24 draw, *Basic Checkers*.

D – 9-14 draw, R. Hartley – V. Ryan, 1970 National.

R. King – M. Holmes

9-14 24-20 10-15 22-17(A) 15-19?(B) 23-16 12-19 17-10 6-15 21-17(C) 5-9(D) 17-13(E) 9-14?(F)
25-22 8-12(G) 29-25 4-8(H) {diagram} 27-23?(I) 1-5 23-16 12-19 32-27 5-9(J) 13-6 2-9 25-21
14-18 22-17 9-14 17-10 7-14 27-24 3-7 30-25 18-23 26-22 23-27 22-17 14-18 draw

A – Or 22-18 draw PP.

B – 7-10 draw PP.

C – Or 25-22 White strong?, R. Beeson – F. Miller, 1939 NCA National.

D – Or 7-10 or 1-6 may also be difficult.

E – Or 25-22 1-6 29-25 7-10 27-24 9-14 25-21 3-7 White strong, but this seems to be a draw.

F – 1-6 White better, KingsRow.

G – 7-10 (2-6 29-25 7-10 25-21 8-12 27-24 WW) 13-9! (29-25 may draw)

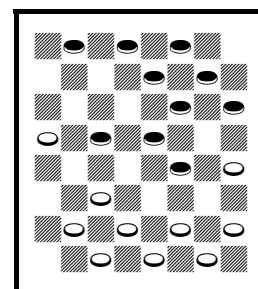
3-7 29-25 1-5 25-21 14-18 27-23 WW.

H – 2-6! 27-24! 14-18! 32-27! 6-10 13-9 10-14 26-23 19-26 30-23 4-8 9-6

1-10 24-19 15-24 22-6 WW.

I – See the diagram. 13-9!! 14-18 (1-5 27-23 WW or 7-10 27-24 WW) 26-23 19-26 30-14 1-5
(others lose) 27-24 12-16 32-27 16-19 31-26 8-12 27-23 14-10! 7-14 25-21 3-8 22-17 8-12 17-10
5-14 10-7 WW.

J – 7-10 27-23 3-7 23-16 8-12 draw.



White wins

M. Holmes – R. King

9-14 24-20 10-15 22-18 15-22 25-9 5-14 29-25 11-15(A) 25-22 6-10(B) 28-24(C) 8-11 23-18!(D)
14-23 27-18(E) 3-8?(F) 21-17 11-16(G) 20-11 7-16 18-11 8-15 24-20 16-19 17-14 10-17 22-13 4-8
26-22 8-11 30-26 1-6 22-17 6-10 13-9 19-23 26-19 15-24 17-13 24-28 9-6 2-9 13-6 10-14 31-26
WW

A – 7-10 draw PP.

B – 8-11 draw PP.

C – = 10-14 24-20 6-10 22-17 9-13 28-24 13-22 25-9 5-14 29-25 11-15 25-22.

D – 22-17 (also good) 4-8 32-28 15-18! (2-6? = KE p.388 v.31) 30-25 10-15* (11-15? WW in
Kear's Encyclopedia p.324 v.31) draw.

E – 26-19 White better, KingsRow.

F – 4-8 draw, KingsRow.

G – 1-6 should also lose, A. Heffner – W. Gardner, 1905 IM.

D. Harwood – R. Gazette

11-16 23-18 8-11 26-23(A) 16-20 24-19 10-14 22-17 7-10 30-26 11-16 28-24(B) 9-13 18-9 13-22
25-18 5-14 18-9 6-13 32-28 4-8 19-15 10-19 24-15 16-19 23-16 12-19 29-25 1-6 25-22 3-7 22-18
7-10?(C) 27-24?(D) 20-27 31-24 2-7 18-14 10-17 21-14 13-17 24-20 7-11 14-10 11-18 10-1 18-22
1-6 22-31 6-10 17-21 20-16 8-12 10-15 19-23 RW

A – 18-14 draw PP.

B – 26-22 draw PP.

C – 7-11 draw PP, as in *Kear's Encyclopedia* p.113 v.26.

D – Losing instead of winning. 27-23 WW.

R. Gazette – D. Harwood

11-16 23-18 8-11 18-14 9-18 22-8 4-11 25-22(A) 5-9(B) 26-23 16-20 24-19 11-15 30-26 15-24
28-19 9-14(C) 22-17 6-9?(D) 17-13!(E) 1-5 13-6 2-9 26-22 9-13 22-18?(F) 7-11?(G) 18-9 5-14
23-18?(H) 14-23 27-18 3-7 29-25 13-17?(I) 21-14 10-17 25-21 17-22 19-15 11-16 15-11 7-10 11-7
22-25 7-2 25-29 WW

A – 26-23 draw PP.

B – 16-20 draw PP.

C – 9-13 draw PP.

D – 7-11 draw, J. Loy, ACFB #369 p.8, along with a few other corrections of *Kear's* p.119X.

E – Corrects 29-25?, *Kear's Encyclopedia* p.119X.

F – 23-18 14-23 27-18 7-11 29-25 11-16 18-15 16-23 15-6 23-26 22-18 26-30 18-14 WW.

G – 3-8* 18-9 5-14 29-25 14-17* White better.

H – 29-25 3-7 25-22 11-16 22-18 WW.

I – 20-24* draw.

R. King – C. Farley

10-15 21-17 9-13 17-14 11-16 24-19 15-24 28-19 8-11 22-18 16-20 25-22 11-16(A) 29-25 6-9
25-21(B) 1-6 30-25(C) 4-8 21-17 6-10 25-21 8-11 19-15* 10-19 14-10* 7-14 17-10 9-14 18-9 5-14
RW(D)

A – 6-9 White better PP.

B – Or 19-15 White better PP.

C – 32-28 6-10* = *Basic Checkers*, 10-15 22-17 9-13, note G.

D – Draw.

C. Farley – R. King

10-15 21-17 9-13 17-14 15-18(A) 22-15 11-18 24-19 8-11 28-24 6-10?(B) 25-21 10-17 21-14 1-6
29-25 6-10 14-9 5-14 26-22 11-15(C) 24-20 15-24 22-6 2-9 32-28 WW

A – KingsRow recommends this.

B – 4-8 draw, KingsRow.

C – 2-6 22-8 4-11 24-20 WW?

T. Fergusson – R. Grazette

9-14 23-19 14-18 22-15 11-18 26-22 7-11 22-15 11-18 30-26(A) 3-7 26-22 7-11 22-15 11-18
19-15(B) 10-19 24-15 5-9 21-17 9-13 28-24 13-22 15-11 8-15 27-23 18-27 25-11 12-16 32-23 16-20
29-25 20-27 31-24 6-10 24-19 10-14 25-21 1-6 19-16 6-10 23-19 14-18* 16-12 10-14 12-8 18-22
8-3 22-26 11-7 draw

A – 21-17 draw PP.

B – 31-26 draw, H. Rudolph – A. Flower, *Basic Checkers*.

R. Grazette – T. Fergusson

9-14 23-19 14-18 22-15 11-18 26-22 7-11 22-15 11-18 30-26 8-11 19-15 10-19 24-8 4-11 28-24(A)
11-15(B) 25-22 18-25 29-22 5-9 26-23 2-7 23-18 7-11* 21-17 12-16 27-23 6-10 17-13 1-6?(C)
32-28 16-20 23-19 20-27 31-24 3-7 24-20 15-24 28-19 10-14 19-15 14-23 15-8 23-26 8-3 7-11
22-18 WW

A – 21-17 draw PP.

B – 12-16 should draw, A. Horton – J. Webster, 1970 National.

C – 3-8 13-6 15-19 draw.

H. Devlin – D. Cadogan

10-14 24-20 7-10 28-24(A) 11-15 23-19 9-13?(B) 27-23 8-11 32-28 5-9(C) 19-16?(D) 12-19 23-7
2-11 26-23 4-8 22-18 15-22 25-18 8-12 30-25 10-15 24-19* 15-22 25-18 13-17 19-15* 3-8 31-26
6-10* 15-6 1-10 23-19 14-30 21-7 9-13 7-2?(E) 13-17 2-7 30-26 7-16 26-23 29-25 17-22 25-18
23-14 19-15 12-19 20-16 8-12 RW

A – 22-18 draw PP.

B – May lose. 8-11 draw PP.

C – 3-7 22-18 15-22 25-9 5-14 19-16 12-19 White strong, KingsRow. Continue 24-8 4-11 29-25 WW.

D – 22-18! White strong, KingsRow. Continue 15-22 25-18 10-15* 19-10 6-22 26-10 2-7 10-6 1-10 29-25 10-15 31-26 4-8 24-19 WW.

E – 7-3* and 19-16 draw.

D. Cadogan – H. Devlin

10-14 24-20 7-10 22-18 11-15?(A) 18-11 8-15 25-22 3-8 20-16! 12-19 23-16 8-12 27-23(B) 12-19 23-16 15-19 32-27 10-15 22-17 14-18 17-13 9-14 16-11 5-9 21-17 14-21 26-23 19-26 30-5 6-10 27-23 10-14 28-24 15-18 24-19 18-27 31-24 14-17 19-16 17-22 24-20 21-25 11-7 2-11 16-7 25-30 7-3 30-26 3-7 26-30 20-16 WW

A – 11-16 draw PP.

B – Or 16-11 WW, L. Johnson – R. Gould, 1937 National.

C. Nash – M. Barker

10-15 22-17 11-16 23-18 15-22 25-18 9-14 18-9 6-22 26-17 8-11 29-25 11-15 24-19 16-23 27-11 7-16 17-14(A) 16-19 25-22 4-8 22-18(B) 8-11(C) 31-27 3-7 27-24 19-23 24-19 11-16 19-15* 16-19 15-10* 7-11 10-7 11-16 7-3 23-26 30-23 19-26 3-8 16-19 14-10 19-23 28-24 12-16 18-15 16-20 24-19 26-31 15-11 31-26 11-7 2-11 8-15 26-22 10-7 1-6 7-3 6-9 32-28 9-14 3-7 23-26 7-2 26-31 2-6 14-18 21-17 22-13 15-22 20-24 19-15 24-27 6-10 27-32 10-14 32-27 draw(D)

A – 28-24 draw, H. Freedman – J. Kear Jr., 1899 match g.6.

B – 32-27 draw, A. Battersby – G. Jewitt, 1910 England v. Scotland.

C – 1-6 draw CR, W. Bryden – J. Holm, *Robertson's Guide* from 11-15 22-17 15-19 CR.

D – Good game.

M. Barker – C. Nash

10-15 22-17 11-16 23-18 15-22 25-18 9-14 18-9 6-22 26-17 8-11 29-25 4-8(A) 17-14(B) 16-19(C) 24-15 11-18 28-24 12-16 24-20 16-19 30-26 1-6 27-23 18-27 32-16 6-9* 26-22 9-18 22-15 7-11(D) 16-7 2-18 21-17 5-9 17-14 9-13 31-26 8-11 14-10 11-15 10-6 15-19 6-2 18-23 26-22 23-26 25-21 26-30 22-18 30-26 18-14 26-23 14-9 23-18 9-5 19-23 5-1 23-27 1-6 3-8 draw

A – The standard move.

B – 24-20 draw PP.

C – 1-6 draw PP.

D – 8-11 draw, D. McKelvie – G. Buchanan, 1895 Scottish Ty.

M. Holmes – R. Allicock

9-13 23-18 11-15 18-11 8-15 22-17 13-22 25-11 7-16 24-20(A) 16-19 29-25 4-8 21-17(B) 5-9
25-21(C) 9-13(D) 17-14 10-17 21-14 8-11?(E) {diagram} 14-9?(F) 11-15 20-16 6-10?(G) 16-11
10-14 9-5 14-17(H) 11-8 17-22(I) 26-17 13-22 8-4?(J) 12-16 27-24 16-20* 30-26 20-27 32-16 22-25
16-12 15-18?(K) 4-8 25-30 26-23 18-27 31-24 30-26 8-11 26-23 11-15 23-19 15-11 19-23 11-15
23-19 15-18 19-16 18-23 16-11 24-20 2-6 23-18 6-10 28-24 10-15 18-23 11-7 20-16 7-10 16-11
10-6 11-8 6-9 23-26 15-18 8-4 9-13 4-8 18-22 26-17 13-22 8-11 22-18 24-20 18-14 11-15 14-9
20-16 9-6 16-11 6-2 11-8 2-6 8-4 6-2 4-8 2-6 8-11 6-2 15-18 2-6 11-15 6-9 15-10 9-6 10-14 6-9
14-17 9-13 18-22 13-9 17-13 9-6 22-18 6-2 13-9 2-7 18-15 7-2 15-11 WW

A – 29-25 draw PP.

B – 25-22 draw PP.

C – 17-13 should draw, A. Long – H. Koff, 1984 British Open.

D – 3-7 draw, KingsRow.

E – 3-7 draw.

F – See the diagram. 27-23! 11-15 23-16 12-19 32-27 WW.

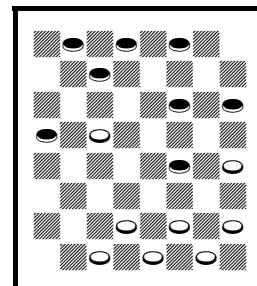
G – 13-17 9-5 2-7 draw.

H – 12-16 27-24 WW.

I – 12-16 27-24 WW.

J – 27-24! WW.

K – 15-19 (or others) 4-8 2-7 draw.



White wins

R. Allicock – M. Holmes

9-13 23-18 11-15 18-11 8-15 24-20 7-11(A) 27-23(B) 6-9?(C) 28-24 9-14(D) 22-18?(E) 15-22 25-9
5-14 24-19 11-15 32-28 15-24 28-19 4-8 29-25 8-11 19-16 12-19 23-7 2-11 25-22 3-8 26-23 10-15
20-16 11-20 30-26 13-17 22-13 15-18 draw

A – 3-8 draw.

B – Seems to be the popular move.

C – Loses, according to KingsRow. 5-9 draw PP.

D – Others seem to lose.

E – 23-19! 5-9 26-23 or 31-27 WW, KingsRow.

J. Walrond – D. Harwood

10-14 23-19 11-15 19-10 6-15 22-18 15-22 26-10 7-14 25-22 8-11 22-17 14-18 17-13(A) 9-14 30-26
4-8 29-25 3-7 26-23 11-16 31-26(B) 2-6?(C) 24-20 16-19(D) 23-16 12-19 27-23 18-27 32-16 8-12
16-11 7-16 20-11 14-18 11-7 12-16 7-3 16-19 26-22 18-23 22-18 23-26 18-15 19-23 15-11 26-30
25-22 30-25 22-17 25-22 3-7 22-18 28-24 23-27 24-20 27-31 20-16 31-26 16-12 26-23 12-8 6-9(E)
13-6 1-10 7-14 18-9 17-13 9-14 11-7 14-10 7-2 23-18 8-3 18-14 2-7 10-6 7-11 6-10(F) 13-9 WW(G)

A – 24-19 draw PP.

B – Others are easier.

C – 8-11 24-19* 7-10 19-15* 10-19 27-24* 18-27 24-8* 27-31 25-22* Red fairly strong.

D – The best of a bad situation.

E – Into an interesting ending, but others may survive longer.

F – 6-1 lasts a long time.
G – Good ending by both players.

D. Harwood – J. Walrond

10-14 23-19 11-15 19-10 6-15 22-18 14-23 26-10(A) 7-14 25-22 8-11 27-23 4-8(B) 29-25(C) 3-7(D)
22-18 7-10 25-22 9-13 18-9 5-14 32-27(E) 11-15 24-19 15-24 27-20 8-11 30-26 2-7 22-17 13-22
26-17 11-15* 31-27 15-19* 23-16 12-19 20-16 14-18* 16-12 19-23 27-24 23-27 12-8 27-31 draw(F)

A – Same as the preceding game.

B – 11-16 draw PP, as in *Basic Checkers*.

C – 22-18 draw PP.

D – 1-6 draw, KingsRow – Cake, 2002 World Computer Ty.

E – 22-18 draw, L. Stubblefield – E. Pitney, 1994 National.

F – Here Red made two consecutive moves; but was not noticed.

R. Grazette – D. Cadogan

11-15 22-18 15-22 25-18 8-11 30-25(A) 4-8(B) 26-22?(C) 9-14?(D) 18-9 5-14 24-19 11-15(E) 23-18
15-24 18-9 6-13 28-19 8-11 22-17?(F) 13-22 25-18 2-6 18-14 RW(G)

A – Probably new.

B – 10-15 Red better, KingsRow.

C – 18-14 draw, KingsRow.

D – 11-16 22-17 16-19 RW?

E – 11-16 22-17 8-11 Red better, KingsRow.

F – 27-23 draws.

G – Continue 10-17 21-14 1-5 RW.

D. Cadogan – R. Grazette

11-15 22-18 15-22 25-18 12-16 29-25 16-20 24-19 9-13(A) 25-22 5-9(B) 19-15(C) 10-19 23-16 8-12
27-23 12-19 23-16 4-8 32-27?(D) 6-10?(E) 16-12?(F) 8-11 30-25 10-15 26-23 1-5 21-17 15-19
23-16 9-14 RW

A – 10-14 draw PP.

B – 8-11 draw PP.

C – 28-24 draw, *Kear's Encyclopedia* p.154 v.33.

D – 16-12? RW, J. Drummond 1866. 26-23 draw, *Pierce Single Corner*.

E – 8-12! RW, A. Heffner, *Master Play* p.403 v.9G.

F – 26-23 draw.

M. Holmes – M. Barker

11-15 24-20 12-16 20-11 7-16 28-24 16-20 22-18 15-22 25-18 8-11 24-19 10-15(A) 19-10 6-22
26-17 11-15 29-25(B) 4-8 17-13(C) 9-14 25-22 15-18*(D) 22-15 5-9 13-6 1-26 31-22 8-11 22-18
14-23 27-18 20-24 21-17 2-6 18-14 6-10 14-7 3-10 17-13 11-15 13-9 15-18 9-6 10-14 30-25 24-27
32-23 18-27 draw

A – 2-7 draw PP.

B – 31-26 White better, KingsRow.

C – 25-22 8-11 17-13 9-14? (1-6 draw) 31-26? (22-17 WW) draw, *Wood's Checker Studies I*, #88-2 v.3.

D – 8-11?, into the preceding note.

M. Barker – M. Holmes

11-15 24-20 12-16 20-11 7-16 22-18 15-22 25-18 8-11 29-25 4-8 25-22 8-12 27-24(A) 16-20 24-19 2-7 19-16 12-19 23-16 10-14(B) 26-23 6-10 31-27(C) 9-13 18-9 5-14 22-18 1-5(D) 18-9 5-14 23-18 14-23 27-18 20-24 28-19 11-20 18-15 10-14 15-10 20-24 10-6 7-11 6-2 14-18 19-15 18-23 15-8 3-12 2-7 24-27 draw

A – 28-24 draw PP.

B – 9-13 draw, W. Hellman – D. Oldbury, 1965 WCM g.24.

C – 16-12 should draw, W. Ryan – H. Schoenfeld, 1937 ACA National.

D – Or 14-17 draw, W. Haddock – F. Bucklow, 1953 mail.

J. Walrond – T. Fergusson

11-16 21-17 16-20 17-13 8-11 24-19(A) 11-15! 25-21(B) 15-24 28-19 4-8 22-18 9-14 18-9 5-14 29-25 8-11 25-22 11-16 22-18 14-17 21-14 10-17 18-14 7-11 23-18 16-23 26-19 11-16 19-15 16-19 14-9 12-16 18-14 19-24 15-11 17-22* 32-28 16-19 14-10 6-15 27-23 19-26 28-10 1-5 30-23 5-14 draw

A – Rare, but not too bad. 22-18 draw PP.

B – 22-18 draw, J. Mendez – J. Monroe, 1959 *Denvir Sportsman Mail Ty*.

T. Fergusson – J. Walrond

11-16 21-17 16-20 17-13 8-11 22-18 9-14 18-9 5-14 25-22 11-15 24-19 15-24 28-19 4-8 29-25(A) 8-11 25-21(B) 11-16 30-25 14-17 21-14 10-17 13-9 6-13 25-21 2-6 21-14 1-5(C) 22-18?(D) 13-17 26-22 17-26 31-22 6-9* 32-28(E) 7-10 14-7 3-10 18-15 10-14 15-11 9-13 11-7 14-17 22-18 17-22 7-3 22-26 3-7 26-30(F) 7-11 30-25 18-14 13-17?(G) 27-24* 20-27 11-20 27-31 20-24* 17-21 23-18?(H) 25-22 19-15 31-26 24-19 21-25 14-10 5-9?(I) 10-6* 25-30 6-2?(J) 9-13 WW(K)

A – 22-18 draw PP.

B – = 9-14 22-17 11-16 25-22 8-11 24-19 11-15 17-13 15-24 28-19 4-8 22-18 8-11 18-9 5-14 29-25 16-20 25-22 in *Kear's Encyclopedia*.

C – 7-10 draw, J. Drouillard – A. Jordan, 1911 match.

D – 22-17 draw, *Reisman's Pioneer* p.49 v.5C.

E – Best.

F – Or 13-17 RW, P. Davis – J. Bassett, 1974 National from 9-14 22-17 11-15.

G – 25-22 11-15 13-17 RW.

H – 14-10 draw.

I – 25-30 and maybe 22-17 RW.

J – 6-1* 9-13 1-5* and 18-14 draw.

K – This is a RW, as Red quickly wins a piece. The WW occurred later.

R. King – R. Allicock

10-14 23-19 11-15 19-10 6-15 22-17(A) 7-10(B) 17-13 1-6?(C) 25-22 3-7 22-17 12-16?(D) 24-20?(E) 8-11 27-23 14-18* 23-14 9-18 32-27 16-19* 26-23 19-26 30-14 6-9 13-6 2-18 17-14 10-17 21-14 18-23 27-18 15-22 28-24 4-8* 24-19 8-12 31-27 22-26 27-23 26-30 23-18 30-26 19-15 26-22 15-8 22-15 29-25 7-11 8-3 11-16 20-11 15-8 draw

A – 22-18 draw PP.

B – A published loss which seems to draw. 14-18 draw PP.

C – 3-7 draw, KingsRow.

D – 14-18 White strong, KingsRow; 8-11 WW, Master Play.

E – 27-23! 14-18 23-14 9-18 32-27 16-19 17-14 10-17 21-14 8-11 26-23 19-26 30-23 WW, KingsRow.

R. Allicock – R. King

10-14 23-19 11-15 19-10 6-15 22-17 7-10?(A) 17-13 1-6?(B) 25-22 3-7 22-17!(C) 8-11 24-19!(D) 15-24 28-19 14-18 29-25 11-15 32-28 15-24 28-19 4-8 26-22 7-11 22-15 11-18 30-26 2-7 26-23 9-14 31-26 5-9 19-15 10-19 17-3 WW

A – 14-18 draw PP.

B – A popular loss, as I have mentioned before. 3-7! White strong, KingsRow.

C – 29-25? draw, J. Francis – T. Laverty, 2012 National.

D – Or 27-23! 14-18 23-14 9-18 32-27 4-8 26-23 18-22 24-19 WW?, J. Loy ACFB #366 p.33 v.5 note D.

C. Nash – C. Farley

11-16 21-17 7-11 17-13 3-7 24-19 11-15 22-18(A) 15-22 25-18 9-14(B) 18-9 5-14 29-25 8-11 28-24(C) 16-20 25-22 11-16 22-18 14-17* 26-22 17-26 31-22 7-11 30-25* 10-15 19-10 6-15 18-14 2-7 14-10 7-14 23-19 16-23 27-9 20-27 32-23 draw

A – 28-24 draw PP.

B – Or 8-11 29-25 9-14 to same.

C – Or 25-22 or 25-21 draw PP.

C. Farley – C. Nash

11-16 21-17 7-11 17-14 10-17 22-13 3-7?(A) 24-19 9-14 25-22 6-10 22-18 11-15 18-11(B) 8-24 27-11 7-16 28-24 4-8 29-25 16-20 24-19 8-11 19-16 12-19 23-7 2-11 26-23?(C) 10-15* 25-22 1-6 30-25 6-10 25-21 11-16* 13-9 20-24?(D) 9-6?(E) 24-27* 31-24 15-18 22-15 10-26 6-2 14-18 draw

A – A published loss.

B – KingsRow prefers 18-9 which may also win.

C – 25-21 10-15 26-22 WW.

D – 15-19* draw.

E – 22-17 WW, planning 9-6.

D. Harwood – H. Devlin

10-15 24-20 7-10 28-24 3-7 23-18(A) 9-14 18-9 5-14 22-17 11-16(B) 20-11 7-16 24-20 15-19 20-11
8-15 17-13 4-8 25-22 8-11 22-17(C) 12-16(D) 29-25 16-20 25-22 11-16* 27-23 1-5?(E) 23-18 14-23
31-27 WW

A – 23-19 draw PP.

B – 12-16 draw PP.

C – 27-23 draw PP.

D – 1-5 should draw, R. Butler – L. Taylor, 1976 Southern Open.

E – 20-24* 32-27* 24-28 27-24* 16-20 draw.

H. Devlin – D. Harwood

10-15 24-20 7-10 28-24 3-7 23-19 9-14 22-17 5-9 17-13 1-5 26-23 14-18 23-14 9-18 25-22?(A)
18-25 29-22 15-18 22-15 11-18 32-28 18-22 27-23 10-14 30-26 22-25 19-16 12-19 23-16 RW

A – 21-17 draw, KingsRow.

R. King – H. Devlin

10-14 23-19 6-10 19-15 10-19 24-15 11-18 22-15 7-11 26-22 11-18 22-15 8-11(A) 15-8 4-11 25-22
9-13(B) 27-23(C) 1-6 32-27(D) 6-10 22-18 3-7 18-9 5-14 29-25 11-16 27-24 10-15 24-19 15-24
28-19 14-18* 23-14 16-23 14-9 7-11 draw

A – 14-17 draw PP.

B – 1-6 draw, KingsRow.

C – 30-26 White better, R. Beckwith – T. Kozenski, 2003 Ohio Ty.

D – 22-18 draw, R. King – P. McCarthy, 1997 match g.37.

H. Devlin – R. King

10-14 23-19 6-10 22-17 11-15 17-13 2-6 25-22 8-11 29-25 4-8 24-20 15-24 draw

J. Walrond – R. Gazette

9-14 22-17 6-9 26-22(A) 1-6(B) 22-18(C) 11-15 18-11 8-15 24-19 15-24 28-19 14-18(D) 23-14 9-18
30-26 4-8 26-23 6-9 23-14 9-18 19-16 12-19 27-23 18-27 31-6 2-9 17-13 9-14 25-22 7-11 22-17
14-18 29-25 11-15 13-9 5-14 17-10 15-19 10-6 19-23 6-2 23-26 draw

A – 24-19 draw PP.

B – 11-15 draw PP.

C – 24-19 draw PP.

D – 9-13 draw, F. Tescheleit – R. Holmes, Shearer Mail Ty. 1907.

R. Gazette – J. Walrond

9-14 22-17 6-9 17-13 1-6 25-22 14-17 21-14 9-25 29-22 10-15(A) 22-17 6-10 26-22(B) 11-16 24-19
15-24 27-11(C) 8-15 28-24 12-16 24-20?(D) 15-19 20-11 19-26 30-23 7-16 22-18 4-8 18-14 3-7
32-27 8-11 27-24 10-15 24-20 15-18 13-9 18-27 31-24 7-10 14-7 5-21 7-3 21-25 3-8 16-19 RW

- A – "Doubtful practice," *Kear's*. Nevertheless, it seems to be the most popular move.
- B – 30-25 draw, N. Banks, *Kear's Encyclopedia* p.276 v.70 and A. Long – J. Horr, 1923 match.
- C – 28-19 may be easier.
- D – 32-27 7-11 24-19 draw.

M. Holmes – C. Nash

10-15 23-19 6-10 21-17(A) 9-13(B) 17-14 10-17 19-10 7-14 25-21(C) 3-7 27-23(D) 11-16 31-27
16-20(E) 29-25(F) 2-6 22-18 6-10 18-9 5-14 25-22?(G) 8-11 24-19 11-16 28-24 1-5 23-18(H) 14-23
21-14 10-17 27-18 16-23 26-19 20-27 32-23 17-26 RW

- A – 22-17 draw PP.
- B – 1-6 draw PP.
- C – Draw, *Basic Checkers*.
- D – 24-19 draw, Glover – J. Caldwell, 1973 Southern Open.
- E – 1-6 draw, KingsRow.
- F – 24-19 draw, KingsRow.
- G – 24-19 8-11 19-16 draw.
- H – See if it works.

C. Nash – M. Holmes

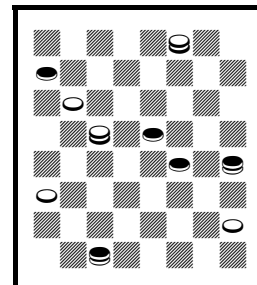
10-15 23-19 6-10 21-17 1-6 17-13(A) 11-16 25-21 16-23 26-19 8-11 29-25 11-16 24-20 16-23 27-11
7-16 20-11 3-7 28-24(B) 7-16 24-20 16-19 22-18 4-8 30-26 10-14 18-15 14-17* 21-14 9-18
26-23?(C) 19-26 31-22 18-23 22-18 6-9?(D) draw

- A – 25-21 to same.
- B – "Not so good," *Kear's Encyclopedia* p.238I. 22-18 draw PP.
- C – 26-22 draw.
- D – 23-26 25-22 2-7 RW.

C. Farley – T. Fergusson

11-15 21-17 15-19(A) 24-15 10-19 23-16 12-19 27-24(B) 7-10 24-15 10-19 32-27 3-7 22-18 6-10
25-21 10-15(C) 18-11 8-15 27-23(D) 4-8 23-16 8-12 31-27(E) 12-19 17-13 7-11 13-6 1-10 27-24
10-14 30-25 14-18 26-22 2-7 21-17 11-16 24-20 7-11 17-14 19-23* 14-10 23-26* 10-7 26-30 25-21
18-25 29-22 30-25 22-17 16-19 7-3 15-18 3-7 11-15 17-13 18-22 7-10 22-26 20-16 26-31 16-12
31-27 12-8 27-24 8-3 24-20 10-14 25-30 13-9 {diagram} 30-26?(F) 9-6?(G) 26-23 6-2 15-18 3-7
18-22 21-17 22-26 draw

- A – Called the Switcher-Dyke in *Wood's Checker Studies*.
- B – 25-21 draw PP.
- C – 1-6 draw PP.
- D – 17-13 draw PP.
- E – 17-13 should draw, K. Grover – E. Lowder, 1966 National.
- F – See the diagram. 30-25* draw.
- G – 3-8 26-23 8-11 15-18 11-15 18-22 15-24 20-27 28-24 and 14-10 WW.



Red draws

T. Fergusson – C. Farley

11-15 21-17 15-19 24-15 10-19 23-16 12-19 27-24 7-10 24-15 10-19 22-18(A) 3-7(B) 32-27 6-10
25-21 1-6 17-14 10-17 21-14 8-11 27-24 11-15 18-11 9-18 24-15 7-16 15-11 6-10 29-25 10-15?(C)
31-27?(D) 5-9 27-24(E) 16-20 24-19 15-24 28-19 18-23 19-16 23-27 11-7 2-11 16-7 4-8 26-22
27-31 7-3 8-12 22-17 9-13 17-14 12-16 3-7 16-19 14-9 19-23 25-22 draw

A – 32-27 draw PP.

B – 6-10 draw PP.

C – 5-9 31-27 10-15 = same.

D – 25-21 5-9 21-17 9-13 17-14 WW.

E – 28-24, W. Hallman (later Hellman), *Wood's Checker Studies* I, #90.

D. Harwood – D. Cadogan

9-13 23-18 11-16 24-20(A) 16-19 18-15(B) 10-14(C) 27-24 5-9(D) 15-11 8-15 22-17 13-22 25-11
7-16 20-11 3-8 24-15 6-10* 15-6 8-15 26-23 1-10 28-24 4-8 29-25 9-13?(E) 25-22 2-6 24-19! 15-24
22-18 6-9 32-28 24-27 31-24 8-11 24-19?(F) 13-17* 28-24 17-22 24-20 22-26 21-17 14-21 19-15
10-19 23-7 26-31 7-2 31-27 2-7 27-23 18-15 23-18 15-10 18-15 10-6 15-11 draw

A – 18-14 draw PP.

B – 18-14 draw PP.

C – 5-9 should draw, A. Granger – J. Bailey, *International Draughts Magazine* vol. 3 g.150.

D – 7-10 draw, KingsRow.

E – 8-11* 25-22 11-16* draw.

F – 30-25 WW.

D. Cadogan – D. Harwood

9-13 23-18 11-16 18-14 10-17 21-14 8-11?(A) 22-18! 6-9 26-23?(B) 1-6(C) 24-19 16-20 31-26
11-16 25-21 4-8(D) 29-25 6-10 28-24 10-17 21-14 2-6 25-21 6-10 18-15 10-17 21-14 9-18 23-14
16-23 26-19 7-11 15-10 11-16 10-6 16-23 27-18 20-27 32-23 12-16 6-2 8-12(E) 2-6 16-20* 14-10
3-8?(F) 10-7 8-11 6-10 20-24 7-3 11-16 18-15 24-27 15-11?(G) 27-31 23-18 31-27?(H) 18-14?(I)
16-19 10-15 19-23* 14-10 draw

A – A popular published loss. 6-9 draw PP.

B – 24-20 WW PP.

C – = 9-13 23-18 11-16 18-14 10-17 21-14 6-9 22-18 1-6 26-23 8-11.

D – = 9-13 22-18 11-16 10-17 21-14 16-20 23-18 12-16 26-23 6-9 31-26 8-12 25-21 4-8 24-19 1-6.

E – 13-17 draw, R. Fortman – Checkers Experimental, 1991 I-D booklet.

F – 20-24 draw.

G – 10-14 27-31 14-18 WW, maybe like the WW below.

H – 16-20 draw.

I – 10-15 27-24 18-14 16-19 15-18 24-27 18-22 19-24 11-7 27-23 7-2 24-27 3-7 12-16 14-10 16-20
10-6 WW! Apparently, four kings (and maybe five kings later) v. three kings win.

R. Allicock – M. Barker

9-13 23-19 6-9 27-23 11-15(A) 22-17(B) 13-22 25-11 8-15 21-17(C) 4-8 17-13 9-14 29-25 8-11
32-27 1-6 25-21 6-9 13-6 2-9 24-20 15-24 28-19 9-13 30-25 14-17 21-14 10-17 26-22 17-26 31-22
7-10* 23-18 10-14 18-9 5-14 25-21 3-7 27-23 13-17* 22-13 7-10 13-9 11-15 9-6 15-24 23-19 24-27
6-1 27-31 1-6 31-27* 6-15 27-24* 20-16 14-18* draw

A – KingsRow prefers this. 9-14 draw PP.

B – 22-18 draw PP.

C – 29-25 draw CR, D. Shields – W. Edwards, 1994 British Open from 11-15 23-18 10-14 CR, to an eventual win for Edwards.

M. Barker – R. Allicock

9-13 23-19 6-9 27-23 11-15 23-18(A) 1-6 18-11 7-23 26-19 8-11(B) 32-27(C) 11-16 19-15 10-19
24-15 16-19?(D) 30-26 3-7(E) 27-24 7-10 15-11 12-16 24-15 10-19 22-18 9-14 18-9 5-14 25-22
6-10 31-27 10-15 27-23 13-17 22-13 15-18 21-17 18-27 17-10 27-31 26-22 31-26 22-17 26-22 10-7
16-20(F) 7-3 20-24 17-14 24-27 14-9 27-31 9-6(G) 2-9 13-6 31-27 11-7 19-23 7-2 23-26 6-1 26-30
2-7 30-26(H) 1-6 26-23 7-10 23-18 6-9 18-23 3-7 23-26 9-13 4-8 10-15 26-23 7-10 8-12 10-14
27-31 28-24 31-26 14-17 23-27 24-20 27-24 29-25 22-29 17-22 26-17 13-22 24-28 15-19 WW

A – Rare.

B – Draw, *Wood's Checker Studies 2*, #8D v.5t.

C – = 9-13 24-19 11-15 28-24 6-9 23-18 1-6 18-11 7-23 26-19 8-11 32-28. 30-26 draw, N. Proffitt – I. Edwards, 1975 mail.

D – 3-7 draw PP, as in *Kear's Encyclopedia* p.439 diagram.

E – 12-16 should have lost, H. Sample – R. Munzinger, 1950 National.

F – 19-23 WW, C. McCarrick – L. Levitt, 1995 International Match.

G – The easiest win.

H – The win, by trading, seems to be fairly easy.

R. Allicock – H. Devlin

9-13 24-19 10-14 22-18 7-10!(A) 18-9 5-14 25-22 11-15?(B) 19-16?(C) 12-19 23-16 14-18?(D)
29-25 8-12 16-11! 12-16 {diagram} 26-23?(E,F) 3-7 23-14 10-26 30-23 6-10 25-22 15-19 31-26*
10-15?(G) 27-24?(H) 1-6?(I) 32-27?(J) 6-9?(K) 23-18?(L) 7-10* 24-20?(M) 10-14 27-23 13-17 22-6
15-31 RW

A – 5-9 draw PP.

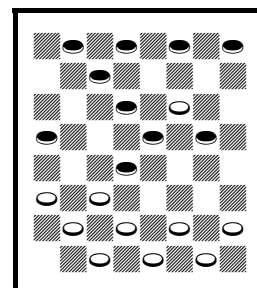
B – 3-7 White strong, PP.

C – 29-25 15-24 28-19 1-5 22-18 8-11 18-9 5-14 25-22 WW PP.

D – 2-7 draw PP; 8-12 16-11 12-16 (3-8! draw, KingsRow) 27-23 16-20 23-19 WW, W. Ryan's *Modern Encyclopedia*, but that may draw?

E – 27-24 10-14! (1-5 WW, W. Ryan, MEC, p.203, v.3C) 24-20 6-10 (16-19 may draw) 32-27 16-19 20-16 3-7* 27-24 18-23 24-20 23-27 (or 19-24 draw) 31-24 19-23 26-19 1-5* 30-26 14-18* 11-8* 4-11 21-17* 18-23* draw.

F – See the diagram. 28-24!! 1-5 (16-20 26-23 WW or 10-14 26-23 WW) 24-20 5-9 32-28 WW, back into Ryan's win mentioned above.



White wins

G – 10-14* 27-24 1-5* 24-15 7-10 draw.
H – 23-18 WW.
I – 7-10* draw.
J – 24-20 7-10 21-17 or 23-18 WW.
K – 7-10* draw.
L – 11-8 4-11 22-18 WW. An incredible string of six consecutive mistakes.
M – 22-17 draw.

H. Devlin – R. Allicock

9-13 24-19 10-14 22-18 5-9 25-22 6-10 27-24(A) 1-5 22-17(B) 13-22 26-17 11-15 18-11 8-15 17-13
4-8?(C) 13-6 2-9 21-17! 14-21 23-18 15-22 19-16 12-19 24-6 9-13(D) 6-2 7-10 2-6 10-14 6-9 14-17
9-14 8-11 28-24 3-8 24-19 8-12 14-18?(E) 11-16?(F) 18-25 16-23 31-26 5-9 26-19 9-14 32-27 14-18
draw(G)

A – KingsRow plays this. 28-24 draw PP.

B – 29-25 draw PP.

C – 14-17 draw, R. Pask's *Key Openings*.

D – 7-11 6-2 11-16 2-6 9-13 6-10 5-9 28-24! 8-11 32-27! 16-20 10-6! 11-16 6-10 3-8 10-7 WW.

E – 32-28 11-16 19-15 16-19 14-18 WW.

F – 22-26 draw.

G – Continue 19-15 12-16 15-11 16-19 25-22 WW. Later Qualifiers used game scoring, which means that your tournament score is the number of games that you won, not the number of matches. And so, here, White may have actually needed the win. But maybe not.

R. King – M. Barker

10-15 24-20 15-19 23-16 12-19 27-24 7-10 24-15 11-18(A) 22-15 10-19 32-27 6-10 21-17(B) 1-6
25-21 8-12(C) 29-25 4-8 17-13 8-11 25-22 11-15(D) 22-18 15-22 26-17 10-15 30-26 2-7 27-24
7-10* 20-16 15-18 24-15 10-19 26-23 19-26 31-15 12-19 15-10 6-15 13-6 19-23 6-2 23-26 2-6
26-31 6-10 15-19 10-15 19-23 17-14 31-26 15-18 23-27 14-10 26-23 18-15 27-31 21-17 31-26 10-6
26-22 17-13 23-18 15-10 22-17 6-2 draw

A – 10-19 draw PP.

B – 25-22 draw PP.

C – 10-15 draw, R. Hallett – L. Balderson, 1994 National.

D – 3-7 draw, R. King – G. I. Miller, 1993 English Open.

M. Barker – R. King

10-15 24-20 15-19 23-16 12-19 27-24 7-10 24-15 10-19 32-27(A) 3-7(B) 21-17 8-12 17-14 9-18
22-8 4-11 27-23(C) 6-10 23-16 12-19 31-27 11-15 20-16 7-11 16-7 2-11 25-22 5-9 29-25 11-16
27-23 10-14 25-21 9-13 21-17 14-21 23-18 16-20* 18-11 20-24* 26-23 19-26 28-19 26-31 11-7
31-27?(D) 7-2 27-23 19-16 23-19 16-12 1-5 2-7 WW

A – 21-17 draw PP.

B – 9-14 draw PP.

C – 27-24 draw, H. Hartshorn – G. Jennings, 1912 National and R. King – W. Edwards, 1994 WCM

g.12.

D – 1-6 draw.

J. Walrond – M. Holmes

10-14 23-19 7-10 19-15 10-19 24-15 11-18 22-15 12-16?(A) 25-22!(B) 16-19(C) 22-17 14-18 17-13
9-14 29-25!(D) 5-9 27-23?(E) 18-27 32-16 8-11 16-7 3-19 31-27 2-7 27-23 4-8 23-16 8-12 25-22
12-19 26-23 19-26 30-23 1-5 22-18 7-11 28-24 11-15 18-11 14-17 21-14 9-27 draw

A – My guess is that this loses. 8-11! draw PP.

B – 28-24 draw, *Kear's Encyclopedia* p.303H. D. Oldbury – D. Lafferty, 1974 National, ended in a WW, although I think 28-24 draws.

C – 8-11 White strong, KingsRow, which may or may not be the best move, and it may or may not draw. 14-18 has been played several times, to wins, losses, and draws.

D – 27-24 WW, D. McGrath – D. Vestal, 1970 U.S. Mail Qualifier.

E – The following is stronger, and may win: 27-24! 3-7 26-22 7-10 31-26 18-23 22-18 2-7 24-20
7-11 26-22 1-5 22-17 8-12 15-8 4-11 25-22 12-16 30-25 WW.

M. Holmes – J. Walrond

10-14 23-19 7-10 19-15 10-19 24-15 11-18 22-15 14-18(A) 21-17 12-16(B) 17-14(C) 16-19
25-21(D) 18-22 26-17 9-18 29-25 5-9 17-14 9-13 30-26 3-7 27-23 18-27 32-16 8-11 15-8 4-20 25-22
6-10 28-24 draw

A – 8-11 draw PP.

B – KingsRow recommends 2-7 draw.

C – 28-24 White strong PP.

D – 26-22 should draw, J. Caldwell – I. Hinson, 1981 I-D.

D. Harwood – C. Nash

9-14 23-18 14-23 27-18 11-15 18-11 8-15 22-18 15-22 25-18 4-8 29-25 8-11(A) 26-23(B) 5-9(C)
32-27(D) 10-15(E) 25-22 7-10(F) 30-26 3-7 24-19 15-24 28-19 1-5(G) 27-24 9-14 18-9 5-14
24-20(H) 11-15 19-16 12-19 23-16 14-18 22-17 18-23 26-19 15-24 16-12 6-9(I) 12-8 9-13 17-14
10-17 21-14 7-11 8-3 11-15 3-8 15-18 8-11 18-22 11-15 13-17 15-19 24-28 19-23 22-25 draw

A – 5-9 draw PP.

B – 25-22 draw, *Master Play*.

C – 11-16 draw, R. Pask's *Key Openings*.

D – 25-22 draw PP.

E – 1-5 draw PP.

F – 6-10 draw, H. Looser – M. Rex, 1978 I-D.

G – 11-16 draw, R. Pask's *Key Openings*.

H – Into the King-McCarthy game below CR.

I – 7-11 draw CR, R. King – P. McCarthy, 1997 match g.5 from 9-14 24-20 11-16 CR.

C. Nash – D. Harwood

9-14 23-18 14-23 27-18 5-9 26-23 12-16 32-27?(A) 16-19! 24-15(B) 10-26 30-23 7-10?(C) 22-17
9-14 18-9 6-22 25-18 10-15 18-14 11-16 28-24(D) 16-20 23-19 2-6?(E) 19-10 6-15 21-17 8-11
27-23* 20-27 31-24 draw

A – 30-26 draw PP.

B – 23-16 RW PP.

C – 6-10 22-17 11-15 RW, KingsRow.

D – The following may have looked shaky: 29-25 15-19 31-26 draw.

E – 15-18 19-15 (29-25 8-11 or 8-12 RW) 18-22 (or 8-12 RW) 21-17 8-12 24-19 3-7 15-10 7-11
14-9 1-5 17-14 11-15 RW.

C. Farley – R. Grazette

12-16 22-17 16-20 17-13(A) 11-15 25-22 9-14(B) 24-19 15-24 28-19 8-11 22-18 4-8 18-9 5-14
29-25(C) 11-15 19-16 8-12 25-22 12-19 23-16(D) 15-19 22-18 14-23 27-18 19-24 21-17 24-28(E)
26-23(F) 10-14* 18-9 1-5 17-14* 7-11 16-7 3-17 23-19 5-14 19-16 17-22 16-11 14-17 11-8 17-21
8-3 22-25 3-8 25-29 8-11 29-25 31-26 6-9 13-6 2-9 11-15 9-14 15-10 14-17 10-15 25-22 26-23
22-26 23-18?(G) 26-22?(H) 18-14 20-24 15-11??(I) draw(J)

A – 17-14 draw PP.

B – 8-11 draw PP.

C – Perhaps this is into the Pioneer.

D – = 9-14 22-17 11-16 25-22 8-11 24-19 11-15 17-13 15-24 28-19 4-8 22-18 8-11 18-9 5-14 29-25
16-20 19-16 12-19 23-16 11-15 25-22.

E – 10-14 draw PP, may be easier, *Kear's Encyclopedia* p.336 v.46 and many games.

F – 30-25! 6-9* 13-6 2-9 26-23* 9-13* 25-22 1-5* 18-14 10-15* 16-12 7-11* draw.

G – 15-19 draw.

H – 26-23 18-14 20-24 RW.

I – 14-10 draw.

J – Continue 24-27 32-23 22-18 RW.

R. Grazette – C. Farley

12-16 22-17 16-20 17-13 11-15 25-22 8-11 29-25(A) 9-14(B) 22-17(C) 4-8 24-19* 15-24 28-19
11-15!(D) 19-16* 8-12 25-22 12-19 23-16 15-19 32-28?(E) 10-15* 17-10 7-14 16-11(F) 14-18 22-17
18-23 27-18 15-22 17-14 3-7?(G) 26-17 7-16 30-26* 6-9 draw

A – KingsRow recommends 23-18 draw PP.

B – 4-8 Red better, PP.

C – 24-19 draw PP.

D – 8-12 draw PP.

E – 30-25 Red better, KingsRow. 27-23? in *Kear's Encyclopedia*, p.30 v.23, may also lose.

F – 22-17 6-10 RW?

G – 19-24 26-17 3-7 RW.

T. Fergusson – D. Cadogan

12-16 21-17 9-13 25-21 16-20(A) 23-18(B) 11-15 18-11 8-15 24-19 15-24 28-19 5-9 32-28?(C) 7-11
26-23 9-14 30-26 11-15 19-16 2-7?(D) 23-19* 15-24 28-19 4-8 26-23?(E) RW

A – 16-19 draw PP.

B – 29-25 draw PP.

C – 30-25 draw, KingsRow.

D – 15-18! RW.

E – 27-23* 6-9* 22-18* 13-22 26-17 9-13* draw.

D. Cadogan – T. Fergusson

12-16 21-17 9-13 24-20 8-12(A) 28-24(B) 10-15(C) 22-18 13-22 26-17 15-22 25-18 6-10(D) 17-13
10-15 30-25 15-22 25-18 7-10 24-19 10-14 18-9 5-14 29-25 14-17 25-22 17-26 31-22 3-7 22-18(E)
7-10 18-15 11-18 23-7 16-23?(F) 27-18 2-11 13-9?(G) 12-16 18-14 16-19 14-10 11-15 9-6 15-18
6-2 draw

A – 11-15 draw PP.

B – 25-21 draw PP.

C – 5-9 draw PP.

D – 7-10 draw, *Kear's Encyclopedia* p.15N.

E – 13-9! 7-10* 27-24 10-14* 32-27 1-5* 22-18 4-8* draw.

F – 2-11 draw.

G – 32-27 WW.

R. Allicock – D. Harwood

11-15 22-17 15-18 23-14 9-18 17-13?!(A) 8-11(B) 21-17(C) 4-8(D) 26-23 10-14?(E) 17-10 7-14
24-20 11-15(F) 25-21?(G) 8-11?(H) 28-24?(I) 18-22 23-19 6-10?(J) 30-26 15-18(K) 26-17 18-22
20-16?(L) 11-20 32-28* 2-6(M) 13-9?(N) 6-13 19-15 10-19 17-10 19-23 27-18 20-27 31-24 22-26
18-15 26-31 24-19 31-27 10-6 1-10 15-6 27-23 19-15 23-18 RW

A – Others are better.

B – = 11-15 22-17 8-11 17-13?! 15-18! 23-14 9-18, Maid of the Mill.

C – 26-23 draw PP.

D – 10-15 Red better, PP.

E – A fairly popular loss. 6-9 draw, H. Spayth, *Game of Draughts* v.174.

F – This may be best. After all, Red did win the game.

G – As played by H. Spayth. 30-26 8-11 25-21 = I.

H – Again, as played by Spayth. 15-19 draw.

I – 30-26 12-16 (2-7 WW, H. Spayth) 29-25 2-7 26-22 5-9 28-24 16-19 23-16 18-23 WW?

J – 14-18 draw.

K – Or 22-25 29-22 14-18 22-17 18-23 WW?

L – 32-28 11-15 20-16 WW.

M – Or 14-18 19-16* 12-19 24-6 1-10* 17-14* draw.

N – 19-15 draw.

D. Harwood – R. Allicock

11-15 22-17 15-18 23-14 9-18 17-13?! 5-9!? 26-23(A) 9-14 24-20 8-11 28-24 11-15 30-26 4-8 23-19
8-11 26-23 3-8 32-28 1-5(B) 21-17!(C) 14-30 23-14 10-17 19-1 5-9?(D) 13-6 2-9 1-6 9-13 6-2 7-10
24-19 30-26 31-22 17-26 27-24 10-14 2-7 26-31 7-16 31-27 16-11 8-15 19-10 WW

A – 24-19 should draw, E. Rolader – E. Ingram, 1978 Florida Open.

B – 6-9 draw, J. Drummond, *Kear's Encyclopedia* p.175 v.26.

C – 31-26? RW, in *Kear's*.

D – 30-26* draw.

J. Walrond – C. Farley

11-16 23-18 10-14 18-15(A) 16-19 22-17 14-18?!(B) 17-14 9-13(C) 24-20 6-9!(D) 26-22 7-11?(E,F)
14-10?(G) 19-23* 28-24 2-7* 31-26 7-14 26-19 18-23* 27-18 14-23 21-17?(H) 11-18 22-15 13-22
25-18 3-7 29-25 7-11 32-28 23-27 30-26 27-31 26-22 31-27 15-10 27-23 18-15 23-16 1-0

A – 26-23 draw PP.

B – "A line that works for complications," *Kear's Encyclopedia*. 7-10 draw PP.

C – The standard move. 7-11 draw, KingsRow.

D – 12-16? loses.

E – 1-6?! (19-23? seems to lose; all of these moves are dangerous, maybe for both sides) 21-17 7-10
14-7 3-10 28-24 19-28 27-24 10-19 24-15 18-23 31-27 2-7 27-18 7-10 15-11 8-15 18-11 9-14 25-21
14-18 22-15 13-22 30-25 10-19 25-18 19-23 11-7 6-9, *Kear's Encyclopedia*, p.296 v.20. Continue
18-15 9-14 7-2 14-18 2-7 18-22 7-10 22-26 15-11 26-31 29-25 23-26 (31-27 10-15 WW) 10-15
26-30 11-7 5-9 7-2 9-14 2-6 WW.

F – 12-16! 20-11 7-16 14-10 may draw, KingsRow. Continue 2-6 10-7! 3-10 27-24 18-23 (9-14 or
10-14 may lose?) 15-11 8-15 24-20 9-14 (10-14 may lose) 20-11 5-9 11-7 19-24 28-19 15-24 22-18
(7-3 24-27 draw) 4-8* draw.

G – 30-26 12-16 14-10 2-6 27-23 WW, *Kear's Encyclopedia* p.297.

H – 15-10 9-14 32-28 draw, planning 10-6.

C. Farley – J. Walrond

11-16 23-18 10-14 26-23(A) 8-11(B) 22-17(C) 7-10(D) 17-13?(E) 3-7 24-19 16-20 31-26 11-15?(F)
18-11 7-16 25-22 2-7 22-18 14-17 21-14 10-17 29-25 17-21 19-15 4-8 25-22 7-10 15-11 8-15 18-11
9-14 23-18(G) WW(H)

A – = 11-16 22-18 10-14 26-22.

B – 7-10 draw PP.

C – 24-19 = 11-16 24-19 8-11 22-18 10-14 26-22.

D – 16-20 draw, KingsRow.

E – 25-22! 16-20 17-13 10-15 30-26 WW?, KingsRow, continue 4-8 22-17 15-22 17-10 6-15 13-6
2-9 26-17 WW?

F – 12-16 19-12 4-8 draw PP.

G – 23-19 WW.

H – Continue 14-23 26-19 WW.

C. Nash – R. Grazette

9-14 24-20 11-16 20-11 8-15 22-18 15-22 25-9 5-14 29-25 6-9(A) 25-22 9-13(B) 28-24(C) 4-8
24-19 8-11 22-18 1-5 18-9 5-14 23-18(D) 14-23 27-18 11-15 18-11 7-23 26-19 3-7 30-26 7-11(E)
21-17(F) 13-22 26-17 11-15 32-28 15-24 28-19 2-7 31-27 7-11 draw

A – 4-8 draw PP.

B – 4-8 draw PP.

C – 23-18 draw, W. Hellman – A. Long, 1948 WCM g.9.

D – 32-28 should draw, R. Fortman – E. Lowder, 1984 Florida Open.

E – 13-17 draw, J. Childers – J. Morrison, 1992 National.

F – 32-27 11-15 draw, J. Charles – J. Grant, 1975 English Open.

R. Grazette – C. Nash

9-14 24-20 11-16 20-11 8-15 22-18 15-22 25-9 5-14 29-25 6-9 25-22 9-13 28-24 4-8 24-19 8-11
22-18 14-17(A) 21-14 10-17 18-14(B) 17-22! 26-17 13-22 23-18* 11-16 27-23?(C) 2-6 32-27 16-20
RW

A – Varies from the preceding game.

B – 18-15 or others may be easier.

C – 19-15* 16-19 14-9* 12-16 15-11* 16-19 27-24 16-20 24-19 draw.

R. King – T. Fergusson

9-13 23-19 5-9 27-23 11-15 22-18 15-22 25-18 8-11 19-15 10-19 24-8 4-11 32-27 6-10 18-14 9-18
23-14 10-17 21-14 11-15 29-25 12-16 25-22 1-5 30-25 16-20 25-21 15-18 22-15 7-10 14-7 2-18
21-17 13-22 26-17 1/2-1/2 (T. Watson – J. O'Dea, 1984 Irish Open)

T. Fergusson – R. King

9-13 23-19 5-9 22-18 11-15 18-11 8-15 27-23 9-14 25-22 7-11(A) 24-20 15-24 28-19 11-15 32-28
15-24 28-19 4-8 22-18(B) 8-11 18-9 11-15 19-16 12-19 23-16 1-5 16-11 5-14 26-23 15-18(C) 23-19
18-23 20-16 14-18 16-12 3-7?(D) 19-16 10-15 12-8 15-19 8-3 7-10 3-7(E) 10-14 31-26?(F) 23-27
30-25 6-9?(G) 26-22 18-23 7-10 27-31 10-17 31-26 16-12 23-27 12-8 27-31 8-3 31-27 3-7 27-23
7-10 WW

A – = 9-13 22-18 10-14 18-9 5-14 25-22 11-15 23-19 7-10 27-23 8-11; 4-8 draw, *Kear's Encyclopedia* p.438X.

B – 30-25 draw, W. Ryan, *Modern Encyclopedia of Checkers* p.202 v.3, from 10-14 24-20 7-10.

C – 6-9 20-16 15-19 draw, MEC p.203F.

D – 10-14 draw.

E – 16-12 WW.

F – 16-12 WW.

G – 27-31 draw.

M. Holmes – H. Devlin

10-15 23-18 7-10 27-23 3-7 32-27 15-19 24-15 10-19 23-16 12-19 18-15 11-18 22-15 9-14(A) 25-22
8-11(B) 15-8 4-11 22-17 6-10 27-24 11-15 29-25 1-6 17-13 7-11(C) 21-17 14-21 25-22 11-16 draw

A – 7-11 draw PP.
B – 5-9 draw, E. Lowder – E. Morrison, 1981 Lakeside.
C – 14-18 draw, J. Morrison – E. Morrison, 1986 National.

H. Devlin – M. Holmes

10-15 23-18 7-10 27-23 3-7 32-27 15-19 24-15 10-19 23-16 12-19 21-17 11-16 18-14(A) 9-18 22-15
5-9 17-13 8-12(B) 15-11 9-14 25-22* 6-10 29-25* 10-15 25-21?(C) 14-18 22-17 18-23 27-18 15-22
17-14 22-25 RW

A – 17-13 draw, *Kear's Encyclopedia* p.235 v.49.
B – 9-14 draw, *H. Shearer's Handbook* p.219 v.38.
C – 27-23* draw.

M. Barker – D. Cadogan

11-16 23-18 7-11 26-23(A) 3-7 24-20(B) 16-19 23-16 12-19 18-15(C) 11-18 22-15 19-23 27-18
10-19 30-26 9-14(D) 18-9 5-14 32-27 8-12 25-22 6-10 22-17 7-11 27-24 11-15 20-16 14-18 16-11
18-23 26-22 1-6 17-13 23-27?(E) 22-18 15-22 24-15 10-19 31-15 22-26 21-17 26-31 17-14 31-27
WW

A – 18-15 draw PP.
B – 24-19 draw PP.
C – 27-24 draw, H. Freedman – W. Wray, 1899 Scotland v. England.
D – 6-10 Red better, KingsRow.
E – Falls into a shot; 23-26 draw.

D. Cadogan – M. Barker

11-16 23-18 7-11 26-23 16-20(A) 30-26!(B) 10-14?!(C) 22-17!(D) 6-10(E) 17-13 1-6 25-22 3-7
22-17 11-15 18-11 8-15 29-25 4-8 24-19 15-24 28-19 8-11 19-16 12-19 23-16 14-18 16-12 11-15
12-8 9-14 8-3 7-11 3-7 11-16 7-11 6-9 WW

A – 3-7 draw, KingsRow.
B – 24-19 draw PP.
C – 10-15 White better, W. Ryan – N. Rubin, 1934 National.
D – 18-15 draw, J. Valentine – E. McRobbie, 1907 Shearer Mail Ty.
E – 9-13 White strong, KingsRow, and may be a WW.

R. Allicock – R. King

9-13 24-19 11-15 28-24 8-11?!(A) 23-18! 11-16 18-11 16-23 27-18 7-16 18-14 10-17 21-14 3-7
25-21(B) 6-10?(C) 24-20 10-17 20-11 7-16 21-14 1-6 29-25 WW

A – 6-9 draw PP.
B – Popular. 24-20! White strong.
C – 16-19 draw.

R. King – R. Allicock

9-13 24-19 11-15 28-24 6-9 23-18 1-6 18-11 7-23 26-19 8-11 27-23(A) 11-16 32-28(B) 16-20 31-27
9-14 30-26?(C) 4-8 22-18 3-7 18-9 5-14 19-15 10-19 24-15 7-10 23-19 2-7 25-22 14-17 21-14 10-17
22-18 17-22 26-17 13-22 18-14 7-11?(D) 14-10 11-18 10-1 22-26 RW(E)

A – 32-28 draw PP.

B – 22-18, M. Tinsley – Rahunov, 1964 Russia.

C – 22-17 draw.

D – 22-26 RW.

E – Draw.

H. Devlin – J. Walrond

9-13 24-19 11-15 22-18 15-22 25-18 8-11(A) 26-22 11-16 29-25 4-8 28-24(B) 16-20 31-26(C) 8-11
18-14?(D) 10-17 21-14 11-16 22-18 6-9 25-21(E) 1-6 32-28 6-10 19-15 10-17?(F) 21-14 13-17*
15-11 16-19 24-15 7-16 15-11* 17-22 26-17 16-19 23-16 12-19 11-7 2-11 17-13 19-23 13-6 23-32
14-10 32-27 18-14 11-15 6-2 15-18 draw

A – 10-15 draw PP.

B – = 11-15 22-18 15-22 25-18 8-11 24-19 9-13 28-24 4-8 26-22 11-16 29-25.

C – 32-28 draw, KingsRow.

D – May lose. 18-15 11-18 23-14 draw, *Duffy's Single Corner* v.100.

E – 32-28 3-8! (2-6 draws in *Duffy's Single Corner*) 25-22 7-10! 14-7 2-11 30-25 9-14 18-9 5-14
22-18 14-17! 25-22 17-21 RW.

F – 10-19 24-15 13-17 15-10 9-13 RW.

J. Walrond – H. Devlin

9-13 24-19 11-15 28-24 8-11?(A) 23-18 11-16 18-11 16-23 27-18 7-16 18-14 10-17 21-14 3-7(B)
22-18!(C) 16-20(D) 24-19 4-8 25-21 6-10 29-25 10-17 21-14 1-6 19-15 6-10 15-6 2-9 25-22 8-11
32-27 11-16 {diagram} 26-23?(E) 16-19* 23-16 12-19 27-23?(F) 19-26 30-23 7-11 23-19 20-24
14-10 9-14 18-9 5-14 10-7 WW

A – Weak. 6-9 draw PP.

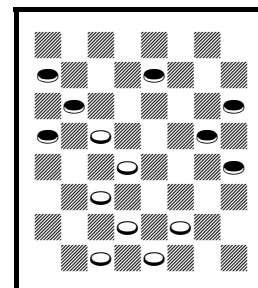
B – 6-10 may draw, according to KingsRow. But continue: 14-7 3-10 22-18!
4-8 25-22 8-11 29-25 5-9 24-20 or 25-21 WW, with a wide variety of options
for both sides.

C – 25-21 16-19 may draw PP.

D – 4-8 may lose, PP.

E – See the diagram. 22-17 WW.

F – 31-26 draw.



White wins

T. Fergusson – C. Nash

9-14 24-20 10-15 22-17(A) 7-10 25-22 3-7 29-25 5-9 17-13 11-16 20-11 7-16 23-19 16-23 26-19
15-24 28-19 8-11 30-26 11-15 32-28(B) 15-24 28-19 10-15 19-10 6-15 13-6 1-10 26-23 15-19 23-16
12-19 22-17 4-8 25-22 8-11 17-13* 10-15 22-17 14-18 17-14 19-23 27-24 11-16 24-20 16-19 14-10
draw

A – 22-18 draw PP.

B – Rare.

C. Nash – T. Fergusson

9-14 24-20 10-15 22-17 7-10 25-22 3-7 29-25 5-9 17-13 11-16 20-11 7-16 23-19 16-23 26-19 15-24
28-19 8-11 30-26 11-15 22-17(A) 15-24 27-20 4-8 26-23 8-11 23-19 14-18 17-14 10-17 21-5 6-10
13-9(B) 11-15 32-28 15-24 28-19 1-6 5-1(C) 6-13 1-5 13-17 25-21(D) 17-22 21-17(E) 22-25 17-13
25-30 13-9(F) 10-14 19-15 30-25 15-10(G) 18-23 10-6 25-22 6-1 22-18 1-6 18-15 5-1 14-18 1-5
draw

A – The standard move.

B – 31-27 draw PP.

C – 20-16 draw, Colossus – Chinook, 1993 match g.48.

D – 31-26 draw, W. Hellman – B. Case, 1953 WCM g.9.

E – 20-16 draw, D. Lafferty – M. Tinsley, 1981 WCM.

F – 5-1 and 1-6 may be easier, but White may have been sure of the draw as played.

G – 15-11? 18-23 11-8 23-26 RW.

R. Grazeffe – M. Barker

10-15 22-17 6-10 17-13(A) 1-6 21-17(B) 11-16 24-19 15-24 28-19 8-11 25-21 11-15 29-25 15-24
27-11 7-16 23-19(C) 16-23 26-19 4-8 25-22 8-11 30-26?(D) 3-7 26-23 11-15 32-28 15-24 28-19
7-11 31-26 11-15 19-16 12-19 23-16 9-14 RW

A – Somewhat rare.

B – 23-19 draw PP.

C – 25-22 draw, F. Moffett – D. Ready, 1980 Lakeside.

D – 31-26 draw, KingsRow.

M. Barker – R. Grazeffe

10-15 22-17 6-10 17-14 10-17 21-14 9-18 23-14 11-16(A) 25-22 8-11?(B) 29-25 16-20(C)
25-21?(D) 11-16 24-19(E) 15-24 28-19 16-23 26-19 4-8 22-18 8-11 19-15 11-16 15-11 16-19 11-8
12-16?(F) 8-4?(G) 19-24 30-26 1-6 26-22?(H) 16-19 22-17 6-9 17-13 2-6 21-17 19-23 18-15 9-18
15-11 7-16 32-28 23-32 28-12 32-28 4-8 18-23 8-11 RW

A – 1-6 draw PP.

B – Has been played to draws, now and then. 16-19 draw PP.

C – 7-10 may lose.

D – 24-19 15-24 28-19 1-6 22-18 11-16 26-23 3-8 25-22 (or 18-15 WW) 20-24 27-11 8-24 23-19
(22-17 WW) may be a WW, H. Rudolph – E. Ebert, 1960 Lakeside, which ended in a draw.

E – 22-17 draw, E. Lowder – E. Ingram, 1968 National.

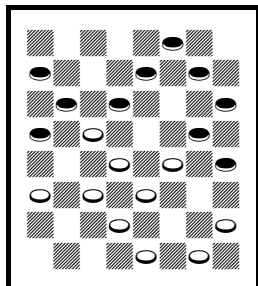
F – 1-6* 8-4 12-16* draw.

G – 18-15! WW.

H – 26-23 24-28 18-15 draw.

D. Cadogan – D. Harwood

9-13 23-18 11-16 18-14 10-17 21-14 8-11?(A) 22-18! 6-9 25-21?(B) 16-20(C) 24-19 11-16(D)
27-23 1-6 29-25 4-8 25-22 6-10 30-25?(E) 10-17 21-14 2-6* 25-21 6-10* {diagram} 22-17(F)
13-22 26-17 9-13* 18-15 13-22 15-6 22-25 6-2 8-11* 28-24(G) 20-27 31-24 25-30 2-6?(H) 16-20
23-18 20-27 32-23 30-26 14-9 5-14 18-9 11-16 9-5 16-20?(I) 6-9 20-24 23-18?(J) {diagram}
24-27?(K) 19-15 draw



White moves

A – Cadogan drew this against Harwood earlier in the ty.

B – 24-20 WW PP.

C – 1-6 draw PP.

D – 13-17? should have lost, W. Forsyth – J. Lamb, 1907 Shearer Mail Ty.

E – 32-27 WW.

F – See the first diagram. 21-17! 20-24* 32-27 16-20 19-16 12-19 23-16 8-11 28-19 3-8 19-15! 10-19 16-12 19-23! draw! As I studied this, at each Red move, I

thought, “That can’t work.”

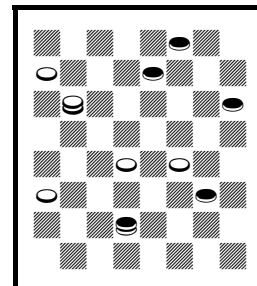
G – 32-27 draws.

H – 24-20* draw.

I – 26-31 RW.

J – 9-14 draw.

K – See the second diagram. 12-16! 19-12 3-8 RW.



Red wins

D. Harwood – D. Cadogan

9-13 23-18 11-16 24-20(A) 16-19 27-24 5-9 24-15 10-19 32-27 8-11 18-15 11-18 22-15 9-14 25-22
14-18 29-25 4-8?(B) 20-16 1-5 27-24 18-23 16-11 7-16 24-20 8-11 15-8 3-7 20-11 7-16 WW

A – 18-14 draw PP.

B – 3-8 draw, into a Tinsley game, E. Lowder – M. Tinsley, 1982 Southern Open, from 11-16 23-18 7-11.

C. Farley – M. Holmes

9-14 24-19 11-16 22-18 5-9(A) 26-22(B) 8-11?(C) 22-17 16-20 17-13! 1-5 30-26?(D) 11-16
19-15?(E) 10-19 25-22 7-10 27-24 20-27 31-15 10-19 22-17 6-10 13-6 2-9 17-13 16-20 13-6 5-9
23-16 14-30 16-11 10-15 6-1 9-13 1-6 30-26 29-25 26-23 25-22 RW

A – = 9-14 22-18 5-9 24-19 11-16. 8-11 draw PP.

B – 25-22 draw PP.

C – 7-11 draw, KingsRow.

D – 28-24! 3-8 25-22 White strong, KingsRow. Continue 14-17* 21-14 10-26 31-22 9-14* 18-9 5-14 22-18 14-17 18-14 17-22 White strong.

E – Probably a miscalculation of some kind. 26-22 draw, KingsRow.

M. Holmes – C. Farley

9-14 24-19 11-16 22-18 6-9(A) 26-22(B) 8-11?(C) 18-15?(D) 11-18 22-6 1-10 25-22 4-8 29-25(E)
8-11 22-18 9-13 18-9 5-14 25-22 14-17* 21-14 10-26 31-22 7-10 28-24?(F) 16-20 30-25 11-16
25-21 3-7 32-28 7-11 22-18 2-7 18-14 10-17 21-14 13-17 19-15 11-18 14-9 18-22 9-6 7-11 6-2
17-21 2-6 22-26 6-10 26-30 23-18 30-26 RW

A – Rare.

B – Or 25-22 draw PP.

C – 10-15 draw PP.

D – 28-24 16-20 22-17 4-8 25-22 11-16 18-15 1-6 22-18 7-11 White strong, KingsRow. Continue
17-13 3-7 29-25 14-17 21-14 10-17 25-21 17-22 21-17! WW?

E – 22-18 should draw, T. Lavery – R. Burroughs, 1987 Florida Open.

F – 27-24 16-20 22-18 draw.

R. King – M. Holmes

9-14 24-19 11-15 27-24(A) 6-9 22-18(B) 15-22 25-18 8-11 24-20(C) 3-8 26-22 9-13(D) 18-9 5-14
22-18 14-17(E) 21-14 10-17 18-14 17-22 23-18?(F) 11-16 20-11 7-23 28-24 13-17 24-19 17-21
19-15 8-11 15-8 4-11 14-10 12-16 10-7 16-19 18-15 11-18 7-3 19-24 3-8 1-6 8-11 6-10 11-16 24-27
31-24 10-14 RW

A – = 11-15 23-19 9-14 27-23.

B – 22-17 draw PP.

C – 19-15 draw, J. Kear, *Kear's Encyclopedia* p.311 v.31.

D – 1-6 draw, A. Scott – J. Campbell, *Kear's Encyclopedia* p.321 v.19.

E – 1-5 or 11-16 draw, KingsRow.

F – 28-24 1-5* 32-27 2-6* 23-18 6-10* 30-25* 10-17 25-21 draw.

M. Holmes – R. King

9-14 24-19 11-15 27-24 8-11 22-18 15-22 25-9 5-14 29-25 6-9(A) 25-22 9-13 24-20 4-8(B) 23-18
14-23 31-27 draw(C)

A – 11-15 draw PP.

B – 11-15 draw PP.

C – The scoresheet went on, but the rest was unreadable. J. Wyllie – R. Yates, *Lees' Guide* p.38 v.5.